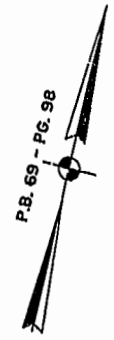


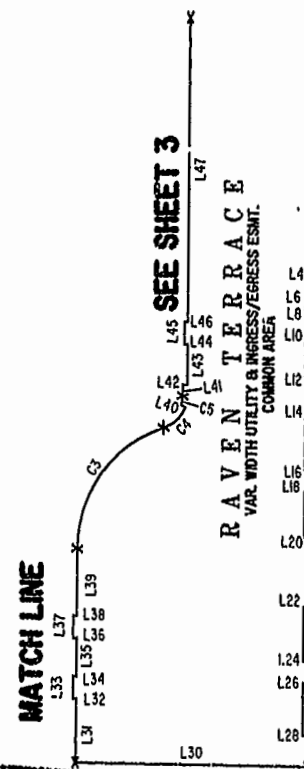
JAMES CITY COUNTY TP 33-3-01-29  
NOW OR FORMERLY  
GARY E. & CATHY L. NESTER  
D.B.619 P.683

JAMES CITY COUNTY TP 33-3-01-24  
NOW OR FORMERLY  
GOLDEN KNIGHTS, INC.  
D.B.568 P.316



MATCH LINE  
SEE SHEET 3

ADDITIONAL LAND



MATCH LINE

SEE SHEET 3

RAVEN TERRACE  
VAR. WIDTH UTILITY & INGRESS/EGRESS ESMT.  
COMMON AREA

ADDITIONAL LAND

CLAIBORNE DRIVE  
VAR. WIDTH UTILITY & INGRESS/EGRESS ESMT.  
COMMON AREA

CHELSEA GCA REALTY PARTNERSHIP, L.P.  
D.B.106 P.407

MARK II INVESTMENTS I.T.D.  
D.B.130 P.671

CHELSEA GCA REALTY PARTNERSHIP, L.P.  
D.B.113 P.693

DETAIL  
N.T.S.

U.S. RTE. 60  
RICHMOND ROAD

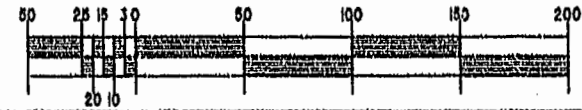
P.B. 69 - PG. 98

City of Williamsburg & County of James City  
Circuit Court: This PLAT was recorded on  
22 Nov 2002  
at 4:00 AM/PM, P.B. 88 PG. 51-58  
DOCUMENT # 022132  
BETSY B. WOOLRIDGE, CLERK  
*Betsy Woolridge*, Dep. Clerk

EXHIBIT "A"  
CLAIBORNE  
(A CONDOMINIUM COMMUNITY)  
PHASE NINE

CITY OF WILLIAMSBURG, VIRGINIA

GRAPHIC SCALE: 1" = 50'



Hassell & Folkes, P.C. Engineers Surveyors Planners Chesapeake, VA, 23320 (757) 547-9531	SIZE C	CONTRACT NO C	DISK/BOX C	FILENAME PH-9-DL06-9.DWG	REV.
SCALE: 1" = 50'		DATE: 10/28/02		SHEET 2 of 5	

A-1520

A-1520