

JAMES CITY COUNTY TP 33-3-01-27
NOW OR FORMERLY
ARTCRAFT - STRATFORD, L.C.
D.B. 649 P. 470

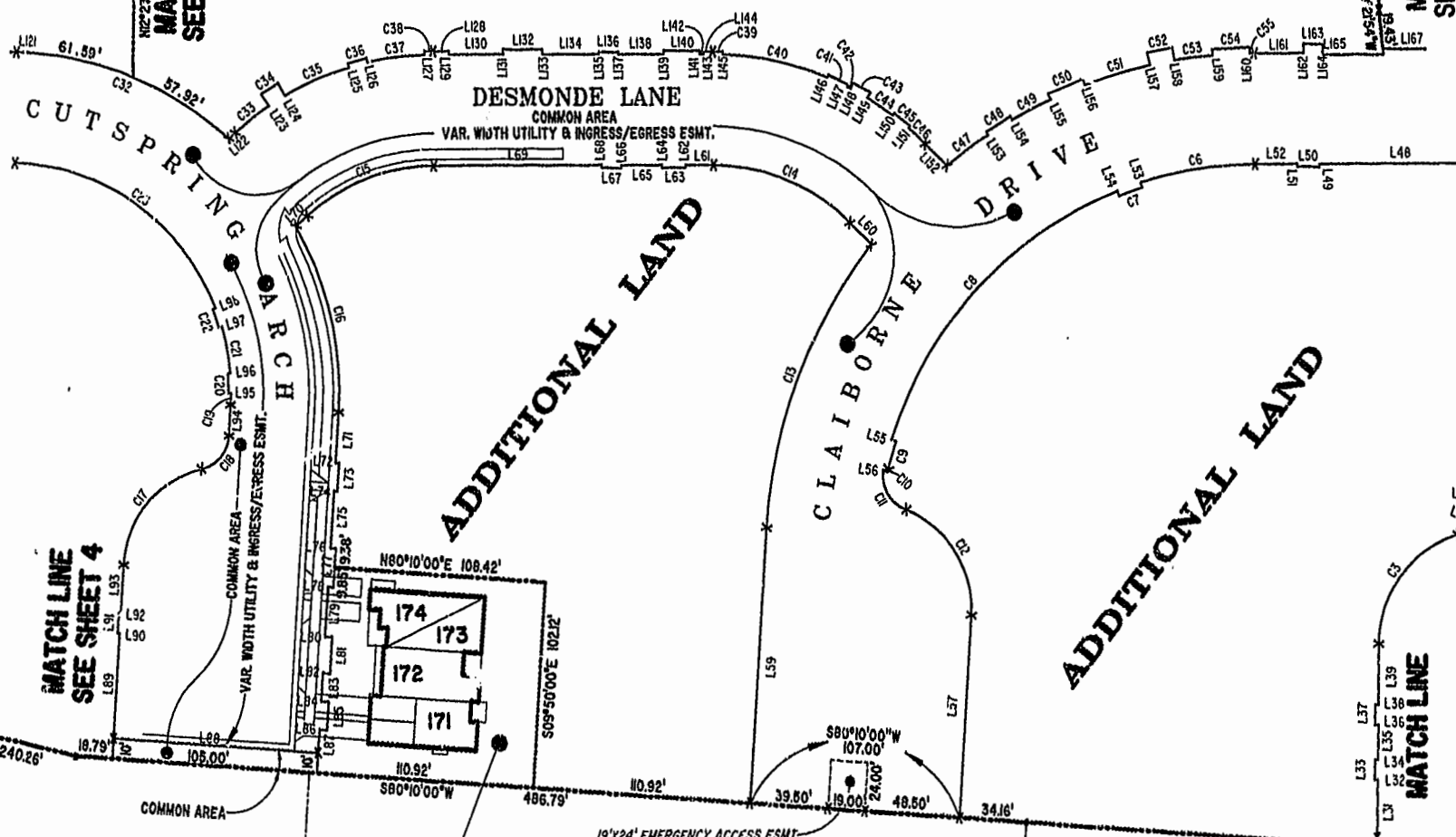
JAMES CITY COUNTY TP 33-3-01-28
NOW OR FORMERLY
GARY E. & CATHY L. NESTER
D.B. 509 P. 735

JAMES CITY COUNTY TP 33-3-C-29
NOW OR FORMERLY
GARY E. & CATHY L. NESTER
D.B. 619 P. 683

ADDITIONAL LAND

ADDITIONAL LAND

ADDITIONAL LAND



MATCH LINE
SEE SHEET 4

MATCH LINE
SEE SHEET 4

MATCH LINE
SEE SHEET 2

SEE SHEET 2

MATCH LINE

TP 281-10-00-B
NOW OR FORMERLY
752 L.L.C.
INST. #980305

PHASE EIGHT
BLDG. 17
SEE DETAIL ON SHEET I

TP 282-08-00-001
NOW OR FORMERLY
752 L.L.C.
INST. #980305

TP 281-10-00-B
NOW OR FORMERLY
752 L.L.C.
INST. #980305

TP 282-08-00-001
NOW OR FORMERLY
752 L.L.C.
INST. #980305

City of Williamsburg & County of James City
Circuit Court. This PLAT was recorded on
28 Feb. 2002
at 3:44 AM/PM, PB 88 PG 49-53
DOCUMENT # 022131
BETSY B. WOOLRIDGE, CLERK
Betsy Woolridge Dep. Clerk

EXHIBIT "A"
CLAIBORNE
(A CONDOMINIUM COMMUNITY)
PHASE EIGHT

CITY OF WILLIAMSBURG, VIRGINIA



Hassell & Folkes, P.C. Engineers Surveyors Planners Chesapeake, VA 23320 (757) 547-9531	SIZE C	CONTRACT NO 1148/16	DISK/BOX PH-8-BLDG-17.DWG	FILENAME PH-8-BLDG-17.DWG	REV.
SCALE: 1" = 80'		DATE: 10/25/02		SHEET 3 of 5	

GRAPHIC SCALE: 1" = 50'

