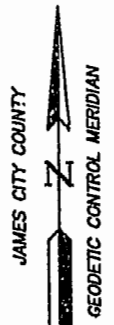
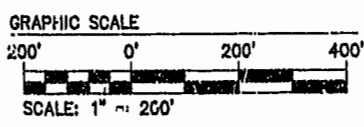
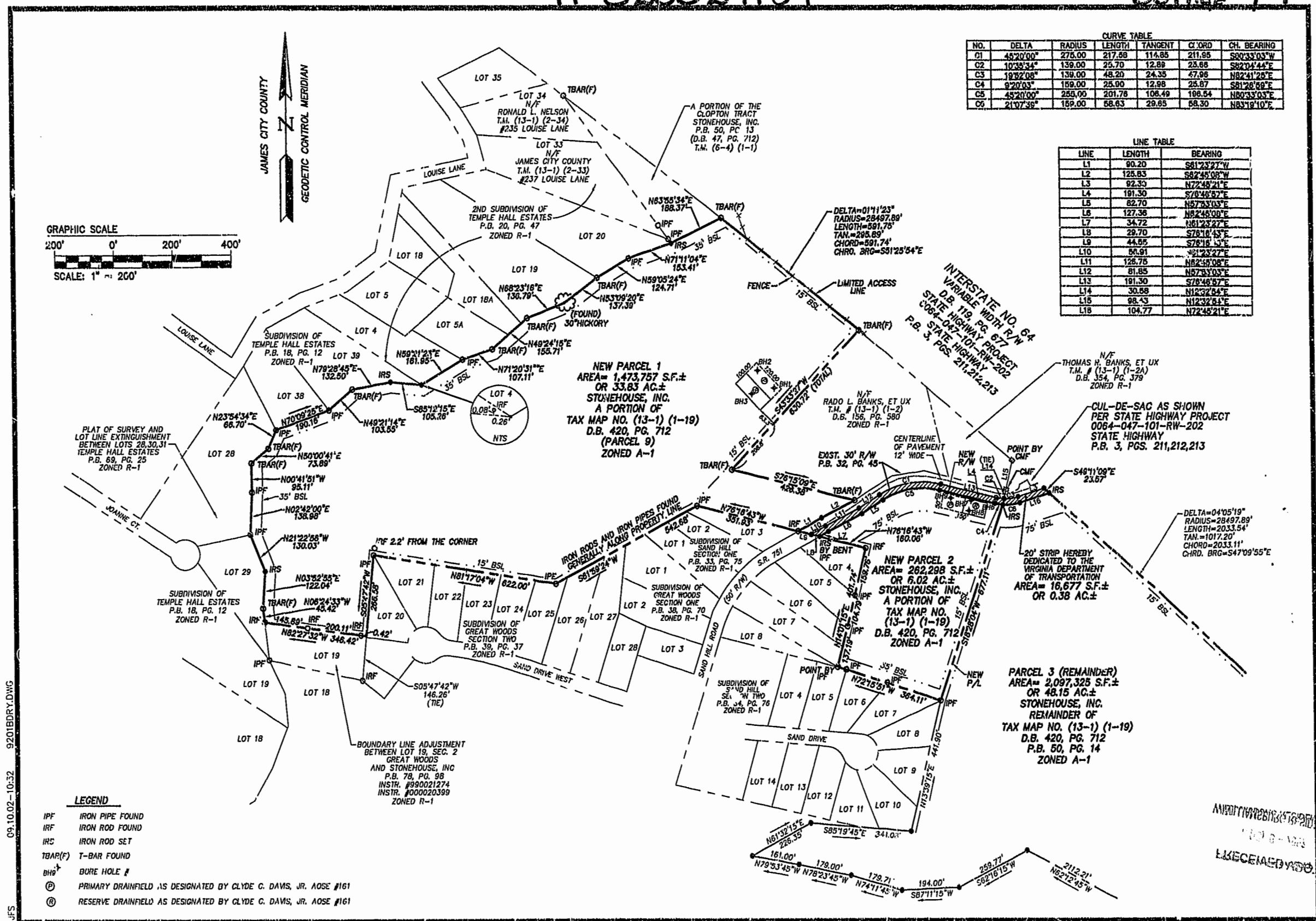


NO.	DELTA	RADIUS	LENGTH	TANGENT	C'ORD	CH. BEARING
01	45°20'00"	275.00	217.89	114.85	211.85	S80°33'03"W
02	10°35'34"	139.00	25.70	12.89	23.66	S82°04'44"E
03	19°32'08"	139.00	48.20	24.35	47.98	N82°41'26"E
04	9°20'03"	159.00	25.00	12.98	25.87	S81°28'59"E
05	45°20'00"	255.00	201.76	106.49	186.54	N80°33'03"E
06	21°07'38"	159.00	58.63	29.65	58.30	N83°19'10"E

LINE	LENGTH	BEARING
L1	90.20	S81°23'27"W
L2	125.83	S82°45'08"W
L3	92.35	N72°48'21"E
L4	191.30	S70°48'57"E
L5	82.70	N57°33'03"E
L6	127.36	N82°48'00"E
L7	34.72	N61°23'27"E
L8	29.70	S78°10'43"E
L9	44.55	S78°16'13"E
L10	56.91	N41°23'27"E
L11	125.75	N82°55'08"E
L12	81.85	N57°33'03"E
L13	191.30	S78°48'57"E
L14	30.68	N12°32'54"E
L15	98.43	N12°32'54"E
L16	104.77	N72°45'21"E



PLAT OF SURVEY AND LOT LINE EXTINGUISHMENT BETWEEN LOTS 28, 30, 31 TEMPLE HALL ESTATES P.B. 69, PG. 25 ZONED R-1

NEW PARCEL 1 AREA= 1,473,757 S.F.± OR 33.83 AC.± STONEHOUSE, INC. A PORTION OF TAX MAP NO. (13-1) (1-19) D.B. 420, PG. 712 (PARCEL 9) ZONED A-1

NEW PARCEL 2 AREA= 262,298 S.F.± OR 6.02 AC.± STONEHOUSE, INC. A PORTION OF TAX MAP NO. (13-1) (1-19) D.B. 420, PG. 712 (PARCEL 9) ZONED A-1

PARCEL 3 (REMAINDER) AREA= 2,097,325 S.F.± OR 48.15 AC.± STONEHOUSE, INC. REMAINDER OF TAX MAP NO. (13-1) (1-19) D.B. 420, PG. 712 P.B. 50, PG. 14 ZONED A-1

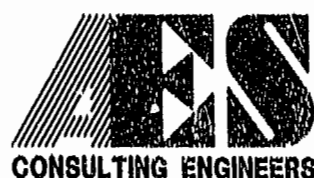
CUL-DE-SAC AS SHOWN PER STATE HIGHWAY PROJECT 0064-047-101-RW-202 STATE HIGHWAY P.B. 3, PGS. 211,212,213

DELTA=04°05'19" RADIUS=28497.89' LENGTH=2033.54' TAN.=1017.20' CHORD=2033.11' CHRD. BRG.=S47°09'55"E

LEGEND

- IPF IRON PIPE FOUND
- IRF IRON ROD FOUND
- IRS IRON ROD SET
- TBAR(F) T-BAR FOUND
- BH9 BORE HOLE #
- ⊙ PRIMARY DRAINFIELD AS DESIGNATED BY CLYDE C. DAVIS, JR. AOSE #161
- ⊙ RESERVE DRAINFIELD AS DESIGNATED BY CLYDE C. DAVIS, JR. AOSE #161

09.10.02-10:32 JFS 9201BDRY.DWG



5248 Olde Towne Road, Suite 1
Williamsburg, Virginia 23188
(757) 253-0040
Fax (757) 220-8994

PLAT OF SUBDIVISION
SHOWING PARCELS 1 AND 2
BEING A PORTION OF THE "TANKARD TRACT"
OWNED BY STONEHOUSE, INC.

STONEHOUSE DISTRICT JAMES CITY COUNTY VIRGINIA



City of Williamsburg & County of James City Circuit Court: This PLAT was recorded on 15 Nov 2002	
at 4.00 AM/PM	PB 82 PG 43444
DOCUMENT # 020027159	
BETSY B. WOOLRIDGE, CLERK	
	Rep. Clerk
No.	DATE
	REVISION / COMMENT / NOTE
	BY

Designed GTW	Drawn JFS
Scale 1"=200'	Date 8/16/02
Project No. 9201	
Drawing No. 2 OF 2	

RECEIVED