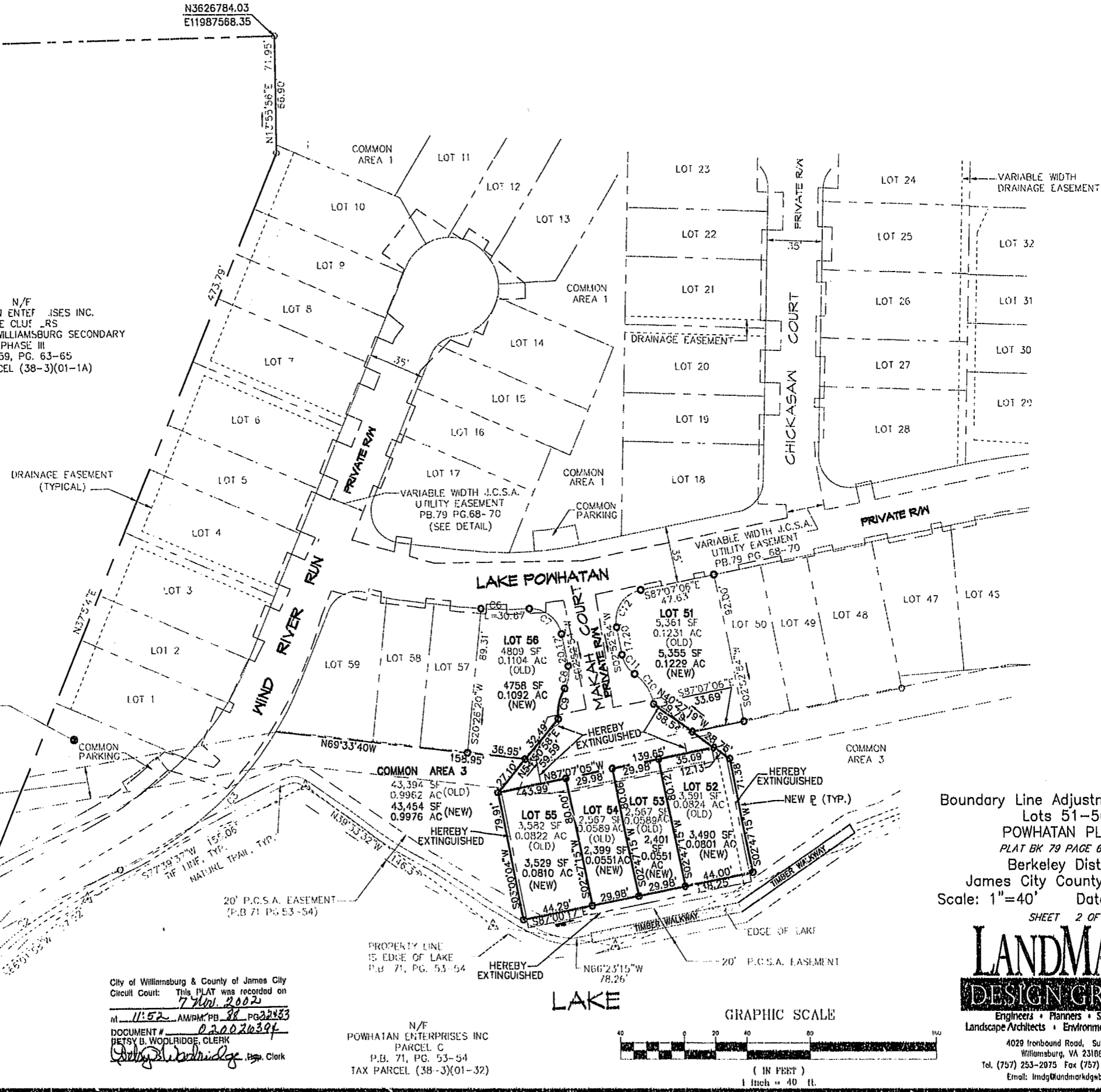


N/F
POWHATAN ENTERPRISES INC.
THE CLUES
POWHATAN OF WILLIAMSBURG SECONDARY
PHASE III
P.B. 59, PG. 63-65
TAX PARCEL (38-3)(01-1A)



20' J.C.S.A. SANITARY
SEWER EASEMENT
P.B. 71, PG. 53-54

COMMON
AREA 2
5897 SF
0.1354 AC

COMMON
AREA 3
43,394 SF
0.9962 AC (OLD)
43,454 SF (NEW)
0.9976 AC (NEW)

20' P.C.S.A. EASEMENT
(P.B. 71 PG. 53-54)

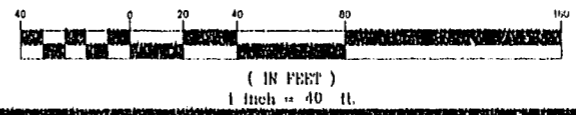
PROPERTY LINE
IS EDGE OF LAKE
P.B. 71, PG. 53-54

City of Williamsburg & County of James City
Circuit Court: This PLAT was recorded on
7 Nov. 2002
at 11:52 AM PM PB 38 PG 22-33
DOCUMENT # 020026394
BETSY B. WOOLRIDGE, CLERK
Betsy B. Woolridge, Esq. Clerk

N/F
POWHATAN ENTERPRISES INC
PARCEL C
P.B. 71, PG. 53-54
TAX PARCEL (38-3)(01-32)

LAKE

GRAPHIC SCALE



Boundary Line Adjustment Plat of
Lots 51-56
POWHATAN PLACE
PLAT BK 79 PAGE 68-70
Berkeley District
James City County, Virginia
Scale: 1"=40' Date: 2/13/02
SHEET 2 OF 2

**LANDMARK
DESIGN GROUP**

Engineers • Planners • Surveyors
Landscape Architects • Environmental Consultants
4029 Ironbound Road, Suite 100
Williamsburg, VA 23108
Tel. (757) 253-2075 Fax (757) 220-0049
Email: lmdg@landmarkdgb.com

DRAWN BY: LFV
CHKD. BY: SAR

PROJ. NO.: 1980232-000.47
DWG. NO.: 12704W