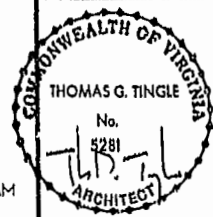


# 020025833

88 PAGE 28

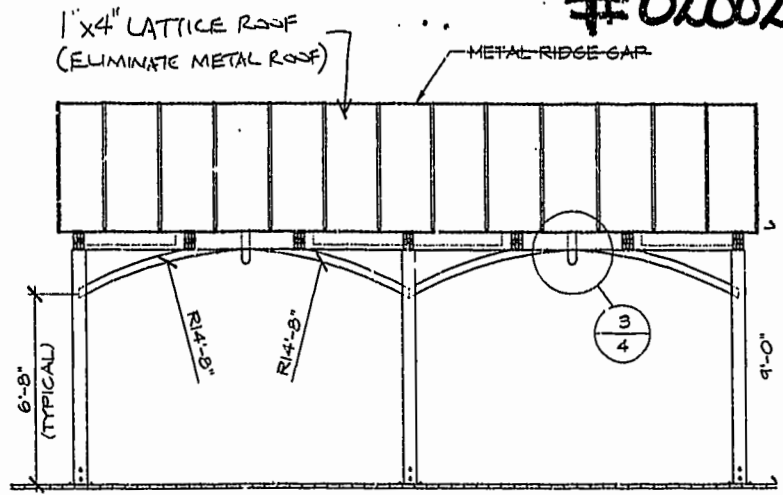
Guernsey  
Tingle  
Architects  
WILLIAMSBURG, VIRGINIA  
57-200-020

Mill Pond Park Gazebo  
Stonehouse  
James City County, Virginia

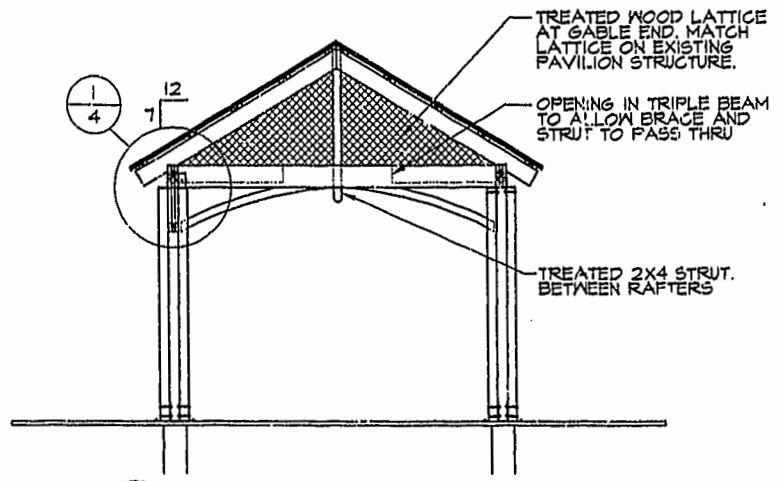


Date 10-18-01  
Drawn WJH  
Checked TGT  
Project 2010BB

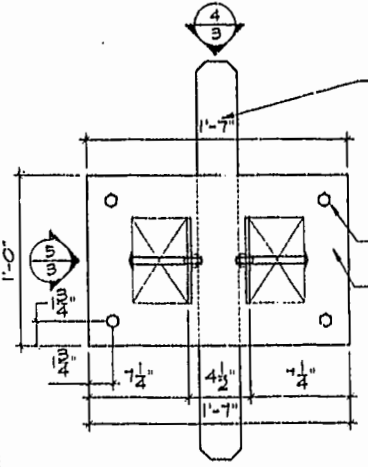
3  
of FOUR sheets



1 SIDE ELEVATION  
3 1/4" = 1'-0"



2 END ELEVATION  
3 1/4" = 1'-0"

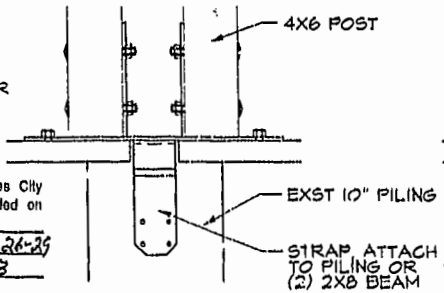


3 POST BASE  
3 1-1/2" = 1'-0"

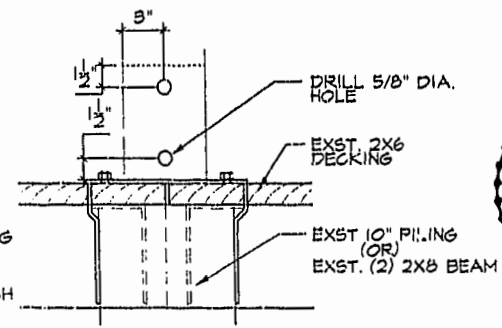
"SIMPSON" MSTC28 STRAP, WELDED TO BASE, FOLD STRAP TO ATTACH TO PILING.  
NOTE: FOR CENTER COLUMN APPLICATION, ROTATE STRAP 90°

DRILL (4) 7/8" DIA. HOLE FOR 5/8" DIA. ANCHOR BOLT  
FABRICATE FROM 1/4" STEEL PLATE

City of Williamsburg & County of James City Circuit Court: This PLAT was recorded on 4 NOV. 2002 at 8:45 AM/PM, PB 88, PG 26-29 DOCUMENT # 020025833 BETSY B. WOOLRIDGE, CLERK  
Betsy B. Woolridge, Dep. Clerk



4 BASE ELEVATION  
3 1-1/2" = 1'-0"



5 BASE ELEVATION  
3 1-1/2" = 1'-0"