

BOUNDARY LINE ADJUSTMENT

OF PROPERTY STANDING IN THE NAME OF TRUSTEES OF MOUNT GILEAD BAPTIST CHURCH AND

WILLIAM HAROLD WASHINGTON & SUZANNE WASHINGTON

LOCATED: ROBERTS DISTRICT, JAMES CITY COUNTY, VIRGINIA

DATE: JUNE 11, 2002 SCALE: 1" = 50'

MITCHELL-WILSON ASSOCIATES, P.C.

CIVIL ENGINEERS & LAND SURVEYORS

720 MAIN STREET, SUITE 112

P.O. BOX 1269

WEST POINT, VIRGINIA 23181

(804) 843-9744

SHEET 2 OF 2

N/F WILLIAM HAROLD & SUZANNE WASHINGTON TM# ((52-3)(4-1) DB 43, PG 504 PLAT IN DB 286, PG 605A AREA FORMERLY = 44,658.42 S.F. OR 1.025 AC NEW AREA = 23,877.942 S.F. OR 0.548 AC.

N/F DOUGLAS SANFORD JOHNSON TM# (52-3)(4-2) DB 779, PG 588 PB 59, PG 89

LOT 3 N/F WILLIAM E. HARRIS TM# (52-3)(1-3) DB 359, PG 220

LOT 4 N/F BRUCE L. & KUM SUN PHILLIPS TM# (52-3)(1-4) DB 553, PG 137

LOT 5 N/F WENDELL C. & MARY D. WRIGHT TM# (52-3)(1-5) DB 417, PG 485

LOT 6 N/F GREGORY R. & EMILY F. JAMES TM# (52-3)(1-6) DB 432, PG 726

LOT 9 N/F STEVEN C. MYERS, LIVING TRUST TM# (52-3)(9-9) DB 809, PG 531

LOT 10 N/F WILLIAM B. GREEN TM# (52-3)(9-10) DB 754, PG 548

LOTS 34, 35 & 35A PLAT OF ALEX HARWOOD PROPERTY N/F TRUSTEES OF MOUNT GILEAD BAPTIST CHURCH TM(52-3)(2-34)

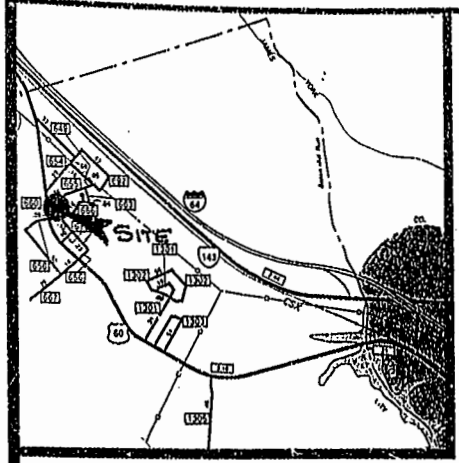
AREA FORMERLY = 210,135.916 S.F. OR 4.824 AC. NEW AREA = 230,916.401 S.F. OR 5.301 AC.

DB 35, PG 123 & 124 DB 36, PG 282 DB 143, PG 711 DB 293, PG 175 PB 41, PG 37A PB 9, PG 37

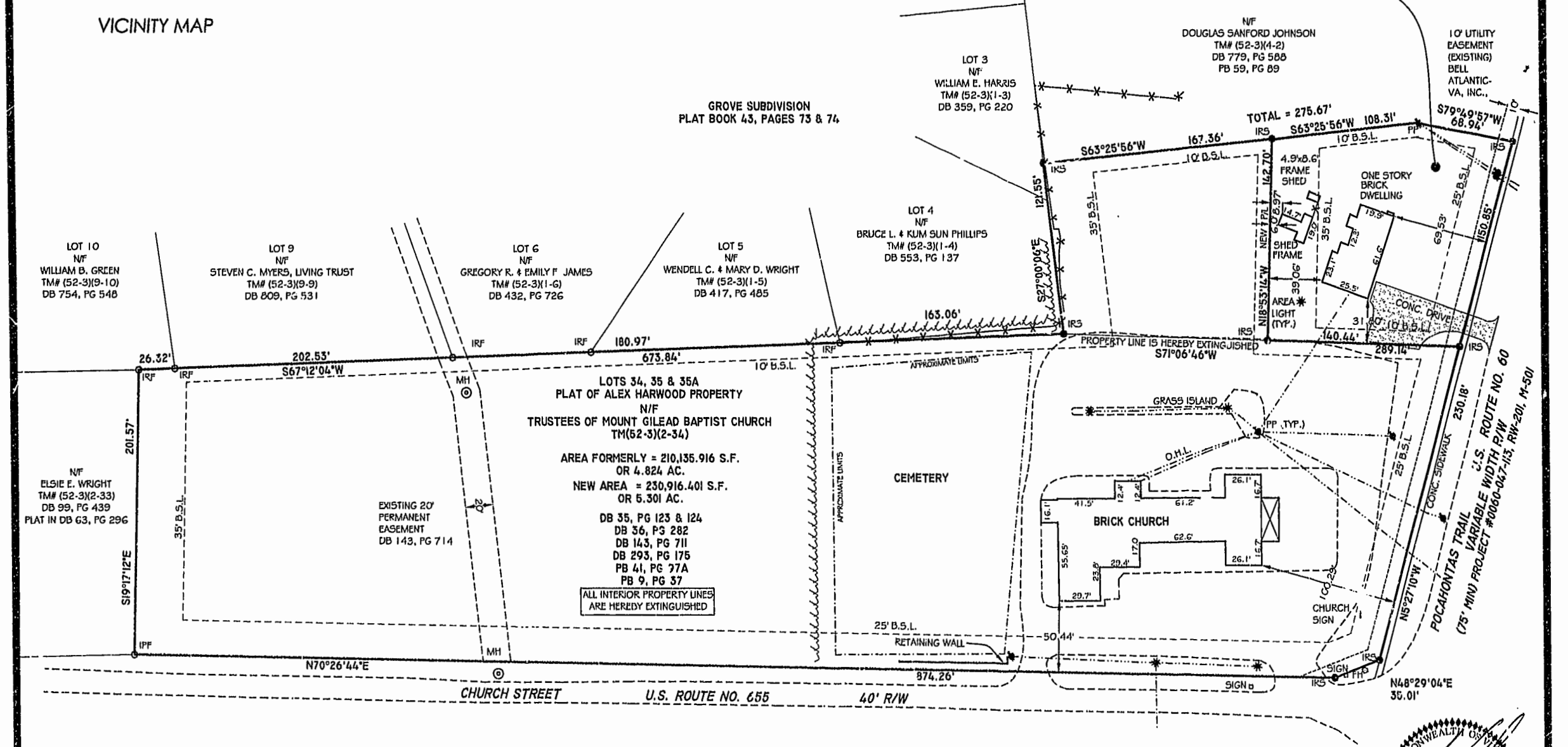
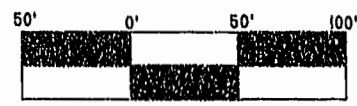
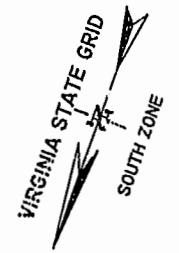
ALL INTERIOR PROPERTY LINES ARE HEREBY EXTINGUISHED

EXISTING 20' PERMANENT EASEMENT DB 143, PG 714

N/F ELSIE E. WRIGHT TM# (52-3)(2-33) DB 99, PG 439 PLAT IN DB 63, PG 296



VICINITY MAP



City of Williamsburg & County of James City Circuit Court: This PLAT was recorded on 1 Jun. 2002 at 11:04 AM/PM: PB 88 PG 23 of 24 DOCUMENT # 220025763 BETSY B. WOOLRIDGE, CLERK

