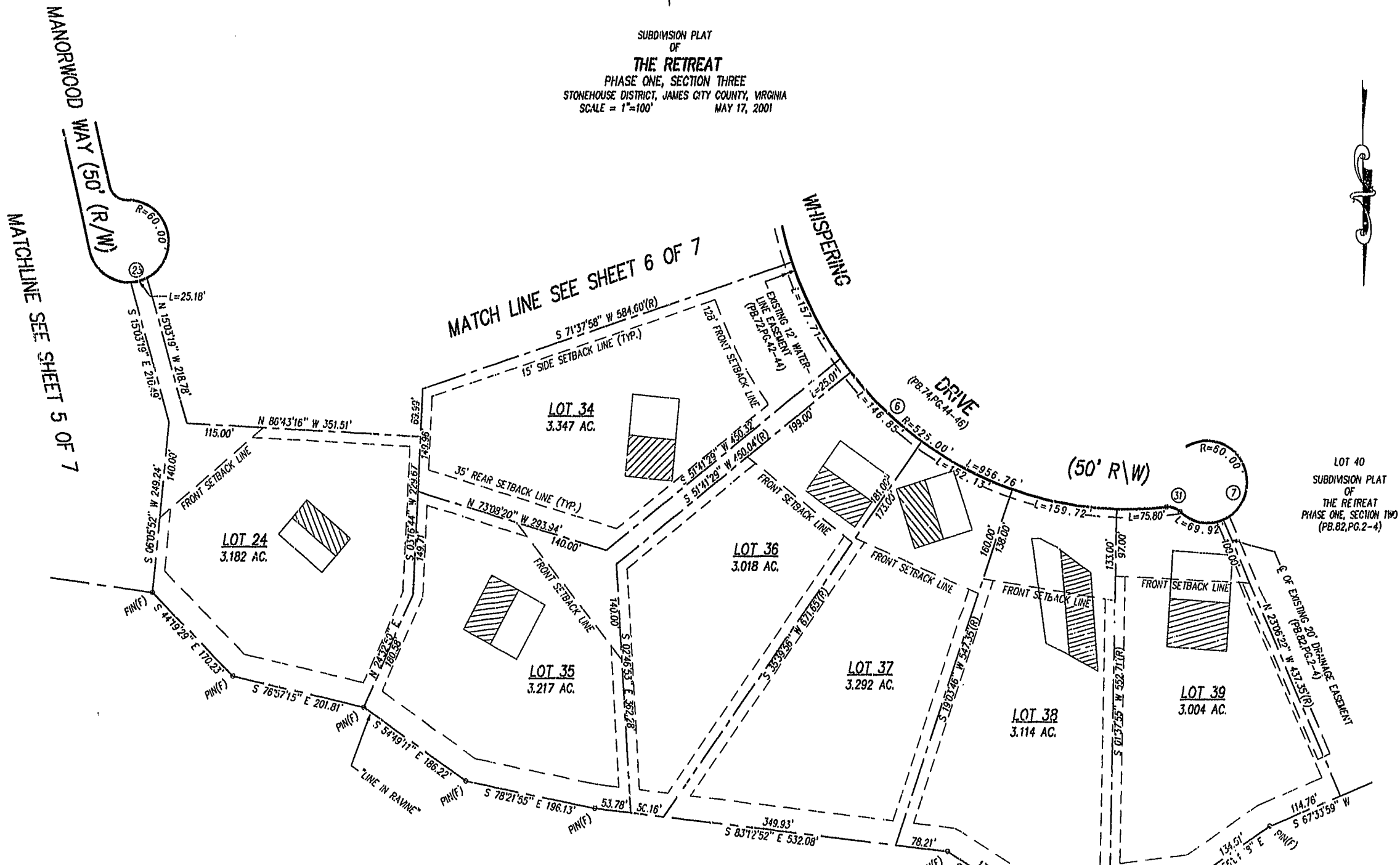


SUBDIVISION PLAT OF THE RETREAT PHASE ONE, SECTION THREE STONEHOUSE DISTRICT, JAMES CITY COUNTY, VIRGINIA SCALE = 1"=100' MAY 17, 2001

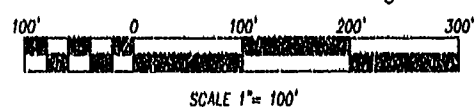


NOTE: 1. UNLESS OTHERWISE NOTED ALL DRAINAGE EASEMENTS ARE TO BE PRIVATELY MAINTAINED. 2. ALL STREETS ARE DEDICATED FOR PUBLIC USE. 3. 12' EXCLUSIVE EASEMENT HEREBY DEDICATED TO THE JAMES CITY SERVICE AUTHORITY.

N/F WILLIAMSBURG CHRISTIAN RETREAT ASSOCIATION, INC. (DB.351,PG.704) (DB.304,PG.701)

City of Williamsburg & County of James City Circuit Court: This PLAT was recorded on 15 Oct. 2002. DOCUMENT # 020023583 Betsy B. Woolhidge, CLERK

LEGEND: PRIMARY DRAIN FIELD (hatched box), RESERVE DRAIN FIELD (empty box)



SEE SHEET 1 OF 7 FOR NOTES AND CERTIFICATIONS SEE SHEET 3 OF 7 FOR CURVE DATA

Rickmond Engineering, Inc. ENGINEERING SURVEYING LAND PLANNING 1643 MERRIMAC TRAIL WILLIAMSBURG, VA. VOICE: (757) 229-1776 FAX: (757) 229-4683 www.rickmond.com

Table with 5 columns: CHECKED BY: CBU, DRAWN BY: CBD, SCALE: 1"=100', DATE: 5/17/01, JOB NO: 01117