

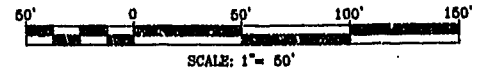
CURVE DATA

CURVE	DELTA ANGLE	RADIUS	ARC LENGTH	TANGENT	CHORD LENGTH	CHORD BEARING
C1	03°10'45"	407.38'	22.63'	11.32'	22.63'	N 59°00'22" E
C2	90°00'00"	25.00'	39.27'	25.00'	35.36'	S 12°24'59" W
C3	41°44'13"	50.00'	36.42'	19.08'	35.62'	S 07°45'22" W
C4	70°31'44"	25.00'	30.77'	17.68'	28.87'	S 22°09'07" W
C5	90°00'00"	25.00'	39.27'	25.00'	35.36'	N 77°35'01" W
C6	250°31'44"	50.00'	218.63'	70.71'	81.65'	S 67°50'53" E
C7	56°24'17"	50.00'	49.22'	26.81'	47.26'	S 56°49'37" W
C8	53°07'48"	50.00'	46.36'	25.00'	44.72'	N 68°24'20" W
C9	46°07'37"	50.00'	40.25'	21.29'	39.18'	N 34°21'11" E
C10	53°07'48"	50.00'	46.36'	25.00'	44.72'	N 15°16'32" W

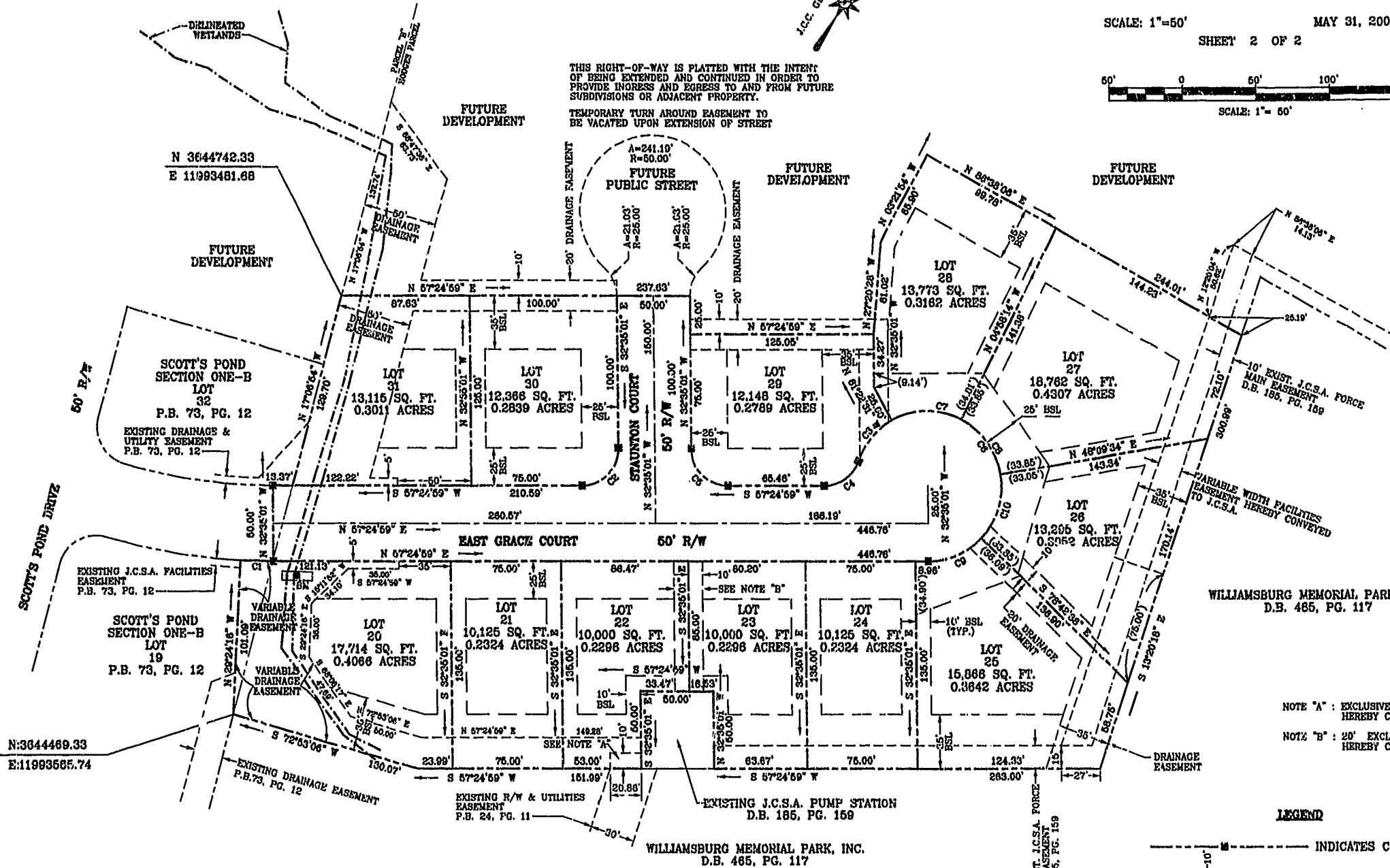
SCOTT'S POND
SECTION ONE-C
POWHATAN DISTRICT
JAMES CITY COUNTY, VIRGINIA

ADPA A.D. POTTS & ASSOCIATES, INC.
 11624 JEFFERSON AVENUE
 NEWPORT NEWS, VIRGINIA 23601
 PHONE: (757)-695-4810

SCALE: 1"=50' MAY 31, 2002
 SHEET 2 OF 2



THIS RIGHT-OF-WAY IS PLATTED WITH THE INTENT OF BEING EXTENDED AND CONTINUED IN ORDER TO PROVIDE INGRESS AND EGRESS TO AND FROM FUTURE SUBDIVISIONS OR ADJACENT PROPERTY.
 TEMPORARY TURN AROUND EASEMENT TO BE VACATED UPON EXTENSION OF STREET



NOTE "A": EXCLUSIVE FACILITIES EASEMENT HEREBY CONVEYED TO J.C.S.A.
 NOTE "B": 20' EXCLUSIVE FACILITIES EASEMENT HEREBY CONVEYED TO J.C.S.A.

LEGEND

- INDICATES CONCRETE MONUMENT
- INDICATES BUILDING SETBACK LINE
- INDICATES DISTANCE ALONG PROPERTY LINE TO FRONT SETBACK LINE
- INDICATES DRAINAGE EASEMENT

STATE OF VIRGINIA COUNTY OF JAMES CITY
 IN THE CLERK'S OFFICE OF THE CIRCUIT COURT OF THE
 COUNTY OF JAMES CITY THIS 10 DAY OF October
 2002, THE MAP SHOWN HEREON WAS PRESENTED AND ADMITTED
 TO THE RECORD AS THE LAW DIRECTS. @ 10:06 AM
 TESTE: Betsy B. Woolridge CLERK
 PLAT BOOK 88 PAGE 142

City of Williamsburg & County of James City
 Circuit Court: This PLAT was recorded on
10 OCT 2002
 at 10:06 AM AM/PM: 88 PG. 142
 DOCUMENT # 02.0023404
Betsy B. Woolridge, Clerk

⊙ BENCHMARK: CHISELED SQUARE ON TOP OF HEADWALL
 15' SOUTH OF R/W OF EAST GRACK COURT,
 NORTHWEST PORTION OF LOT 20
 ELEV.=74.71'

