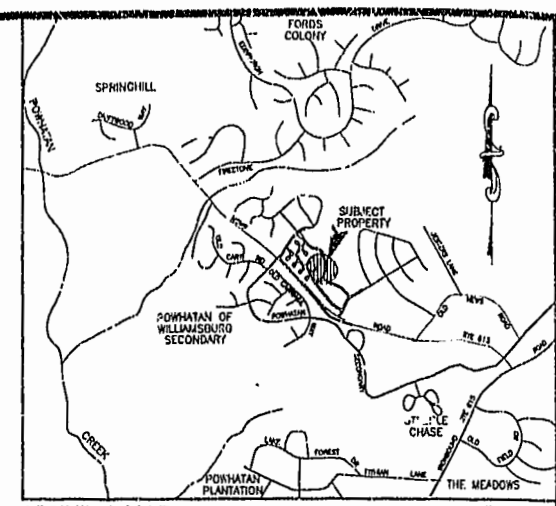
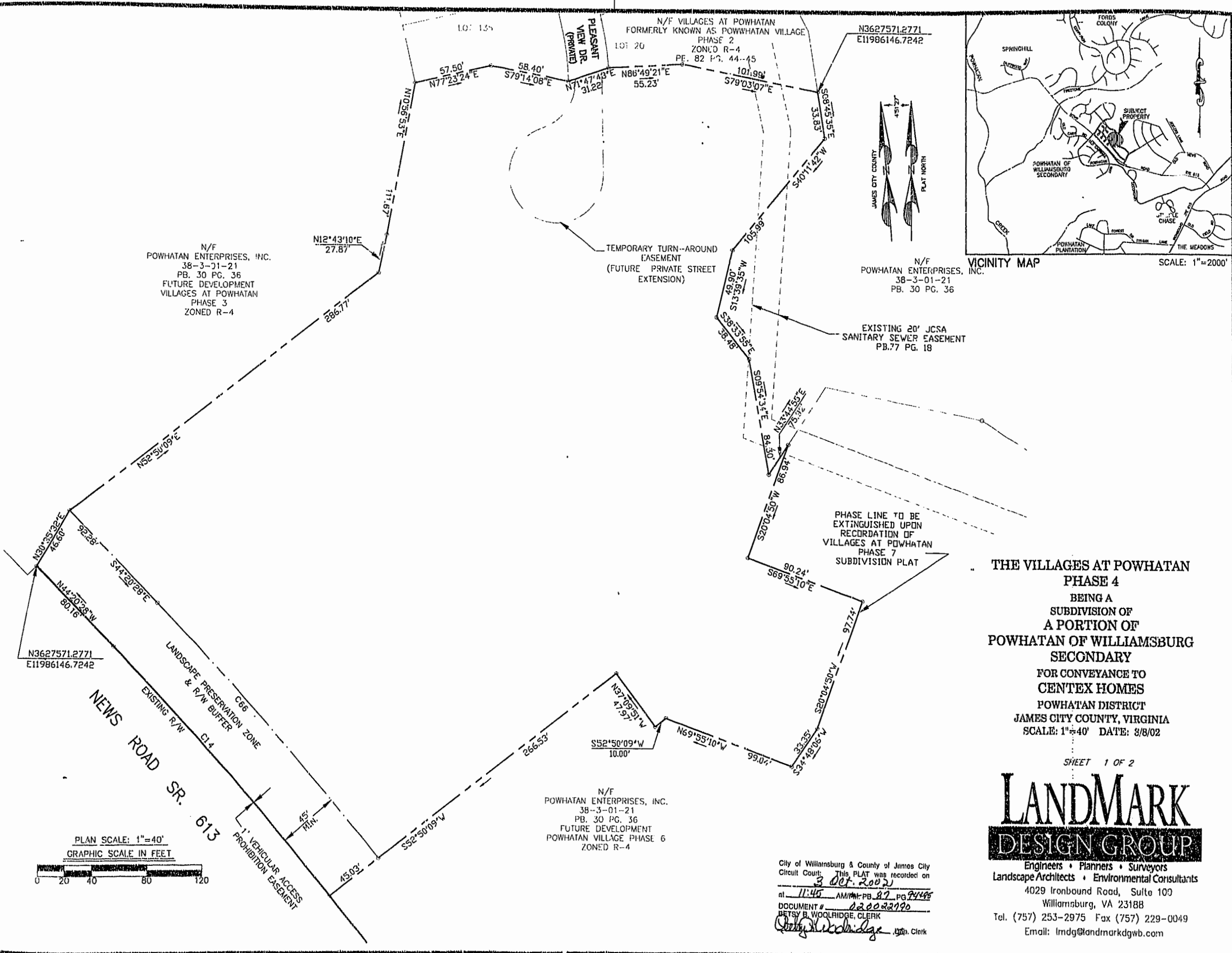


# 070022790 87 PAGE 94

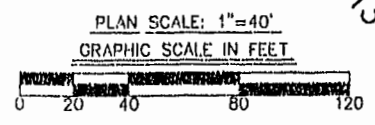


**THE VILLAGES AT POWHATAN  
PHASE 4**  
BEING A  
SUBDIVISION OF  
A PORTION OF  
POWHATAN OF WILLIAMSBURG  
SECONDARY  
FOR CONVEYANCE TO  
CENTEX HOMES  
POWHATAN DISTRICT  
JAMES CITY COUNTY, VIRGINIA  
SCALE: 1"=40' DATE: 8/8/02

SHEET 1 OF 2

**LANDMARK  
DESIGN GROUP**  
Engineers • Planners • Surveyors  
Landscape Architects • Environmental Consultants

4029 Ironbound Road, Suite 109  
Williamsburg, VA 23188  
Tel. (757) 253-2975 Fax (757) 229-0049  
Email: lmdg@landmarkdgb.com



City of Williamsburg & County of James City  
Circuit Court: This PLAT was recorded on  
3 Oct. 2002  
at 11:45 AM/PM: PB. 87 PG. 7448  
DOCUMENT # 020022790  
BETSY B. WOOLRIDGE, CLERK  
*Betsy Woolridge* Jm. Clerk

DRAWN BY: LFV  
CHKD. BY: SAR  
PROJ. NO.: 1780041-151.12  
DWG. NO.: 13109W