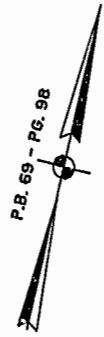


#021688

87 PAGE 69

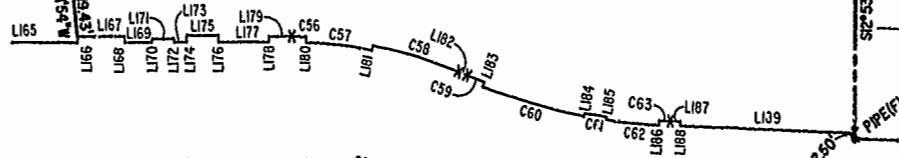
JAMES CITY COUNTY TP 33-3-01-29
NOW OR FORMERLY
GARY E. & CATHY L. NESTER
D.B.619 P.603

JAMES CITY COUNTY TP 33-3-01-24
NOW OR FORMERLY
GOLDEN KNIGHTS, INC.
D.B.568 P.316



MATCH LINE
SEE SHEET 3

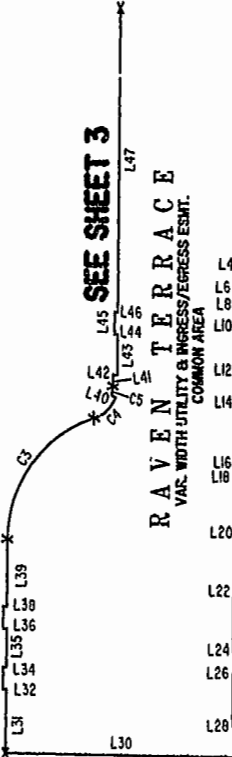
ADDITIONAL LAND



MATCH LINE

SEE SHEET 3

RAVEN TERRACE
VAR. WIDTH UTILITY & INGRESS/EGRESS ESMT.
COMMON AREA



ADDITIONAL LAND

CLAIBORNE DRIVE
VAR. WIDTH UTILITY & INGRESS/EGRESS ESMT.
COMMON AREA

TP 282-04-00-001
NOW OR FORMERLY
CHELSEA GCA REALTY PARTNERSHIP, L.P.
D.B.106 P.407

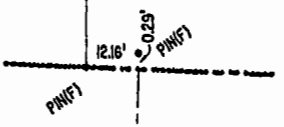
TP 252-01-00-007
TP 252-01-00-009
NOW OR FORMERLY
MARK II INVESTMENTS LTD.
D.P.120 P.671

TP 252-01-00-008
N78°27'47"E 321.22'

TP 282-05-00-101
NOW OR FORMERLY
CHELSEA GCA REALTY PARTNERSHIP, L.P.
D.B.113 P.593

U.S. RTE. 60
RICHMOND ROAD
P.B. 69 - PG. 98

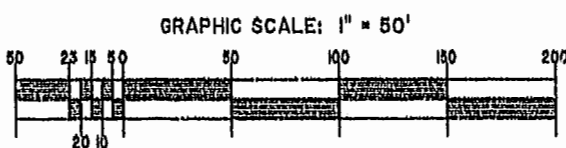
DETAIL
N.T.S.



TP 282-08-00-001
NOW OR FORMERLY
752 L.L.C.
INST. #980305

City of Williamsburg & County of James City
Circuit Court: This PLAT was recorded on
September 14, 2002
at 10:25 AM P.M. P.B. 87 P.G. 69
DOCUMENT # 021688
BETSY B. WOOLHIDGE, CLERK
C. Newell Dep. Clerk

EXHIBIT "A"
CLAIBORNE
(A CONDOMINIUM COMMUNITY)
PHASE FIVE



Hassell & Polkes, P.C. Engineers Surveyors Planners Chesapeake, VA. 23320 (757)547-9531	SIZE	CONTRACT NO	DISK/BOX	FILENAME	REV.
	C		114F/16	PH-5-8L00-12DWG	
SCALE: 1" = 50'		DATE: 08/21/02		SHEET 2 of 5	

A-1520

A-1520