

#021580

87 PAGE 54

EXHIBIT B-13  
SUPPLEMENTAL CONDOMINIUM PLAN  
OF  
WYNDHAM PLANTATION  
CONDOMINIUM

WILLIAMSBURG, VIRGINIA  
SCALE: 1"=10' AUGUST 14, 2002

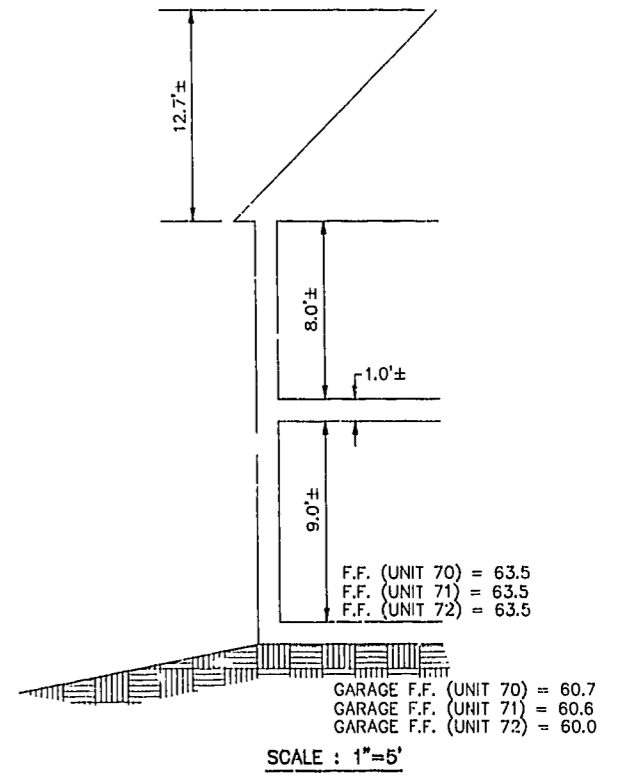
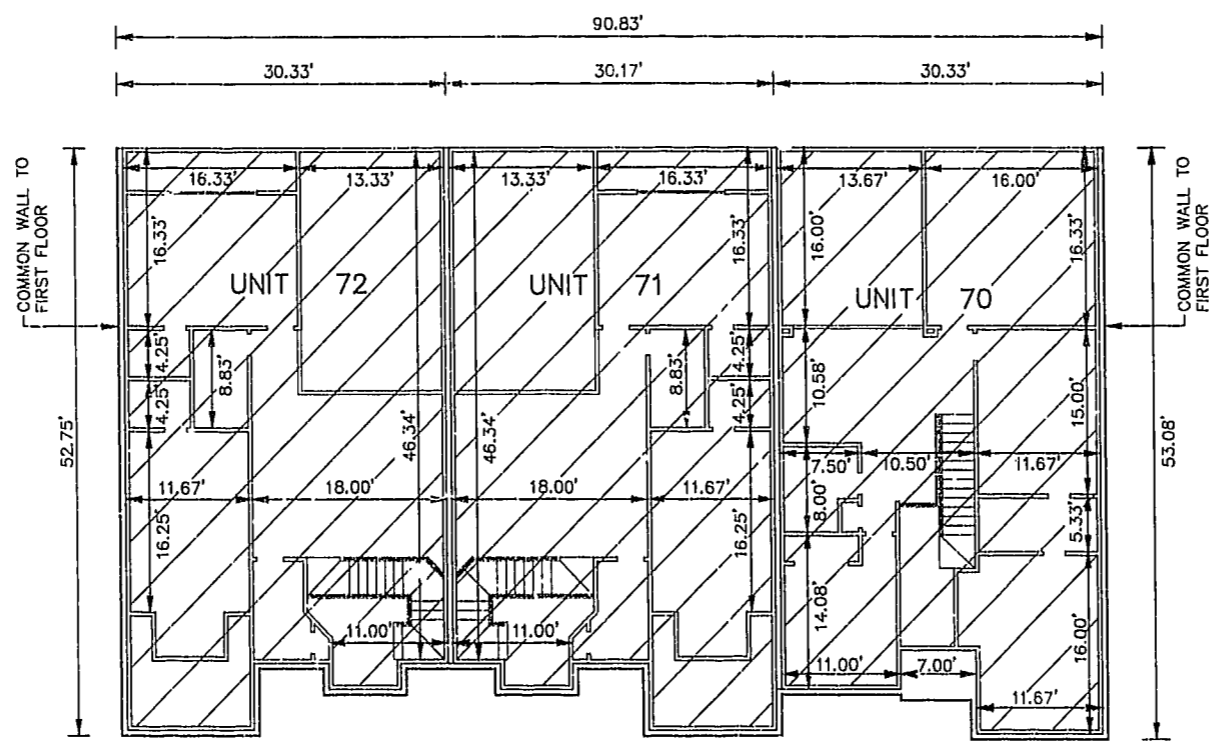
JOHN E. SIRINE AND ASSOCIATES, LTD.  
SURVEYORS • ENGINEERS • PLANNERS  
VIRGINIA BEACH, VIRGINIA  
(757) 486-4910

NOTES:

1. BUILDING DIMENSIONS SHOWN HEREON ARE INTERIOR DIMENSIONS. THESE DIMENSIONS ARE IN FEET AND WERE TAKEN FROM PLANS SUPPLIED ENTITLED "WYNDHAM PLANTATION AT WILLIAMSBURG FLOOR PLANS" BY PROGRESSIVE DESIGNS DATED 11/19/98.
2. INTERIOR UNIT CONFIGURATIONS AND PARTITIONS AS DEPICTED HEREON ARE FOR THE PURPOSE OF ILLUSTRATION ONLY AND MAY NOT REPRESENT THE INTERIOR OF A UNIT AS ACTUALLY CONSTRUCTED.

SECOND FLOOR - BUILDING 9

SCALE: 1"=10'



F.F. (UNIT 70) = 63.5  
 F.F. (UNIT 71) = 63.5  
 F.F. (UNIT 72) = 63.5

GARAGE F.F. (UNIT 70) = 60.7  
 GARAGE F.F. (UNIT 71) = 60.6  
 GARAGE F.F. (UNIT 72) = 60.0

SCALE: 1"=5'

UNIT AREA

THE UNDERSIGNED CERTIFIES THAT THESE PLANS ARE ACCURATE AND COMPLY WITH THE PROVISIONS OF CODE OF VIRGINIA, SECTION 55-79.58.B AND THAT ALL UNITS OR PORTIONS THEREOF DEPICTED HEREON AND ALL COMMON ELEMENTS HAVE BEEN SUBSTANTIALLY COMPLETED.

| PHASE | UNIT No. | UNIT ADDRESS     | UNIT AREA  |
|-------|----------|------------------|------------|
| 15    | 70       | 260 ZELKOVA ROAD | 1,997 S.F. |
| 15    | 71       | 264 ZELKOVA ROAD | 1,957 S.F. |
| 15    | 72       | 268 ZELKOVA ROAD | 2,101 S.F. |

SIGNED: Jeffrey D. Williams  
JEFFREY D. WILLIAMS, L.S.



City of Williamsburg & County of James City  
 Circuit Court: This PLAT was recorded on  
 29 Aug 2002  
 at 8:55 AM/DM: PB 87 PG 49-54  
 DOCUMENT # 02-1580  
 Patsy B. Woodhidge, Clerk  
 Patsy B. Woodhidge, Rep. Clerk

