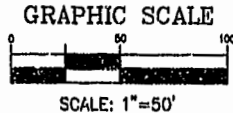


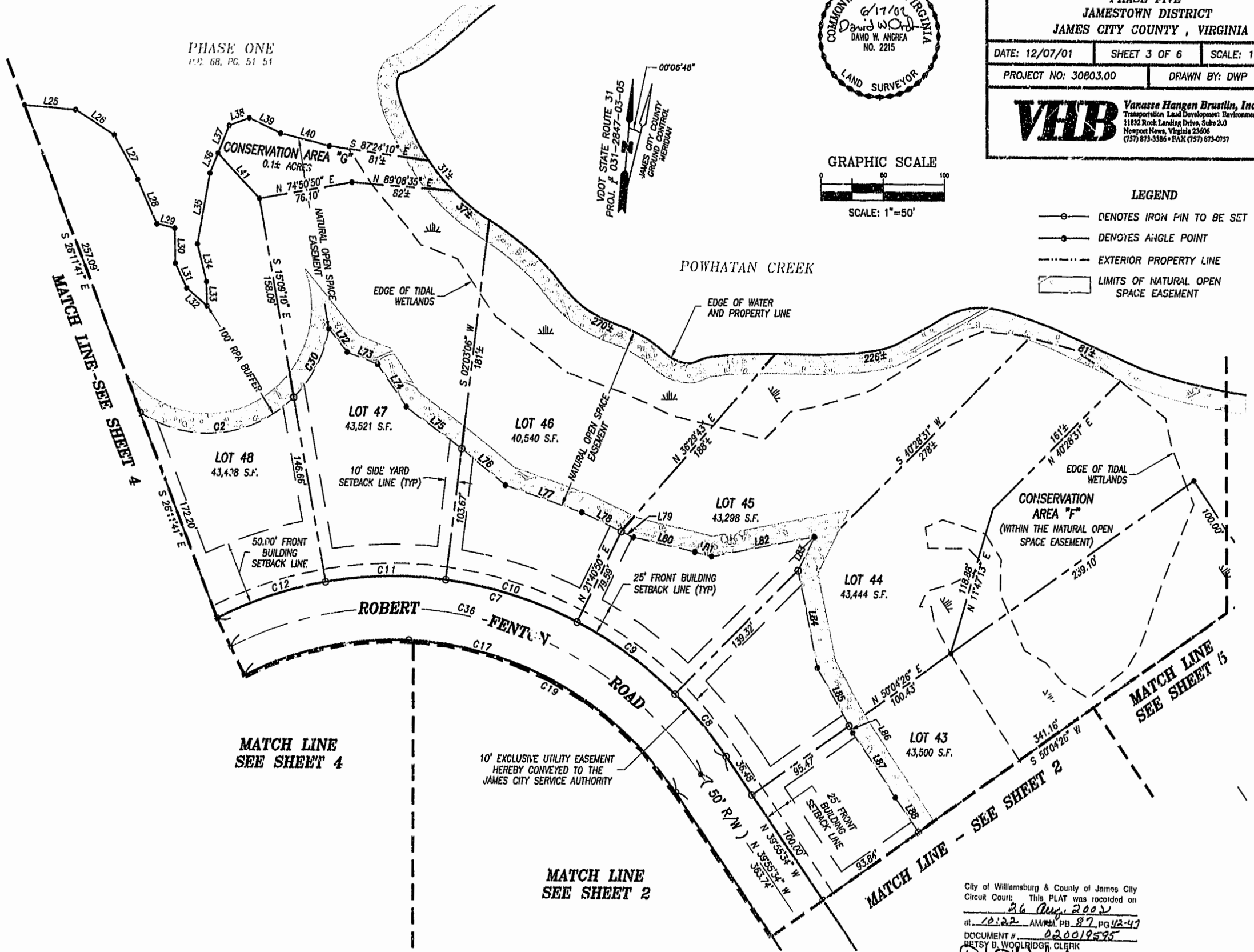
PLAT OF SUBDIVISION
LANDFALL
 AT
JAMESTOWN
 PHASE FIVE
 JAMESTOWN DISTRICT
 JAMES CITY COUNTY, VIRGINIA

DATE: 12/07/01 SHEET 3 OF 6 SCALE: 1"=50'
 PROJECT NO: 30803.00 DRAWN BY: DWP

VHB Varasse Hagen Brustlin, Inc.
 Transportation Land Developments Environmental Services
 11832 Rock Landing Drive, Suite 203
 Newport News, Virginia 23606
 (757) 873-3386 • FAX (757) 873-0757



- LEGEND**
- DENOTES IRON PIN TO BE SET
 - DENOTES ANGLE POINT
 - EXTERIOR PROPERTY LINE
 - ▭ LIMITS OF NATURAL OPEN SPACE EASEMENT



MATCH LINE SEE SHEET 4

MATCH LINE SEE SHEET 2

MATCH LINE - SEE SHEET 2

MATCH LINE SEE SHEET 5

City of Williamsburg & County of James City
 Circuit Court: This PLAT was recorded on
 26 Aug. 2002
 at 10:22 AM/PM 87 PG. 42-47
 DOCUMENT # 020019595
 BETSY B. WOOLRIDGE, CLERK
 Clerk