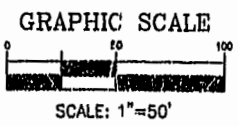


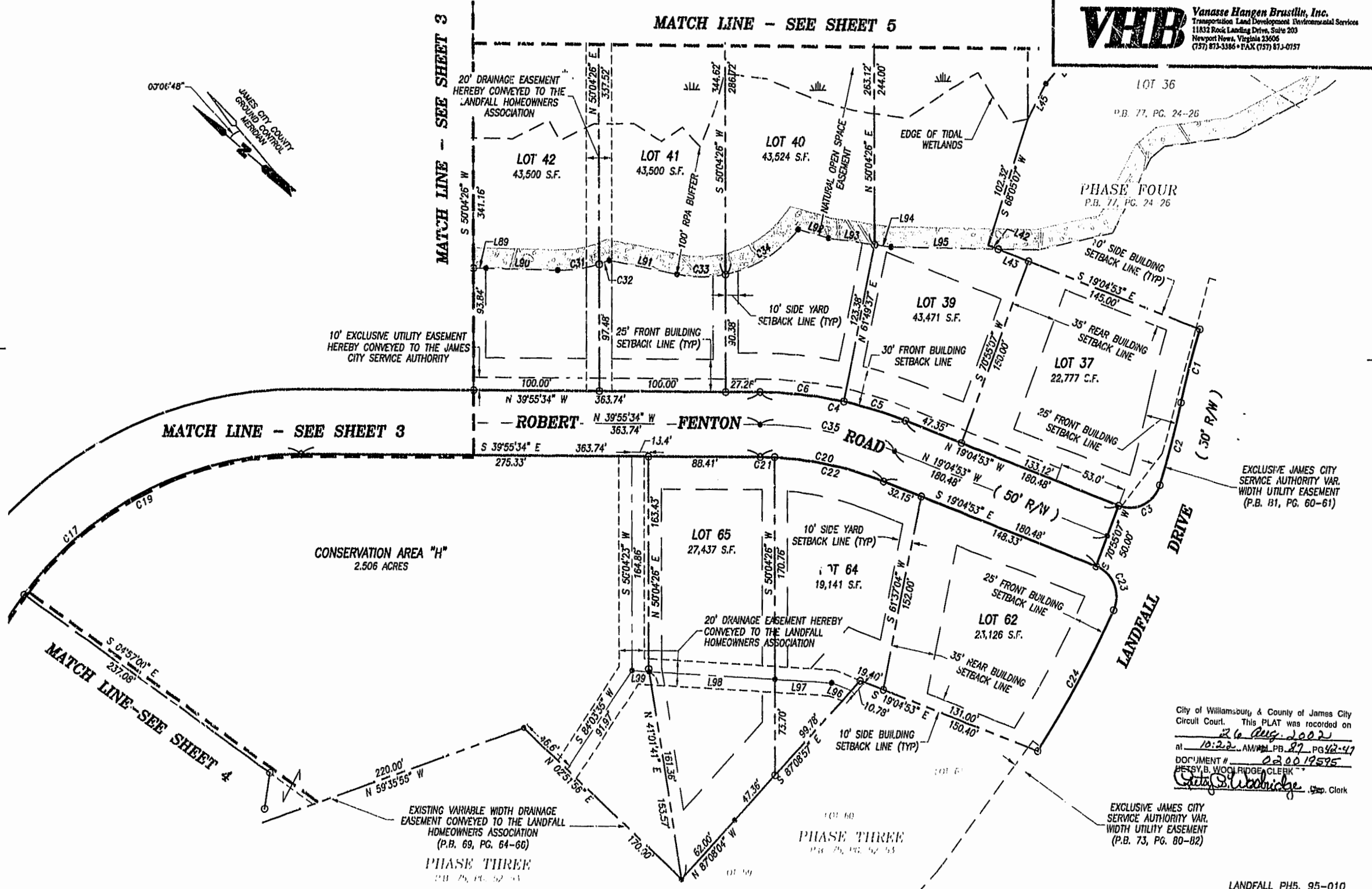
- LEGEND**
- DENOTES IRON PIN TO BE SET
 - DENOTES ANGLE POINT
 - EXTERIOR PROPERTY LINE
 - ▭ LIMITS OF NATURAL OPEN SPACE EASEMENT



**PLAT OF SUBDIVISION
LANDFALL
AT
JAMESTOWN
PHASE FIVE
JAMESTOWN DISTRICT
JAMES CITY COUNTY, VIRGINIA**

DATE: 12/07/01	SHEET 2 OF 6	SCALE: 1"=50'
PROJECT NO: 30803.00		DRAWN BY: DWP

VHB Vanasse Hangen Brustlin, Inc.
 Transportation Land Development Environmental Services
 11832 Rock Landing Drive, Suite 203
 Newport News, Virginia 23606
 (757) 873-3366 • FAX (757) 873-0157



City of Williamsburg & County of James City
 Circuit Court. This PLAT was recorded on
 26 Aug 2002
 at 10:22 AM/PLB 27 PG 42-47
 DOCUMENT # 020019595
 Patsy B. Woolridge, CLERK
 Gary S. Woodbridge, Clerk

EXCLUSIVE JAMES CITY SERVICE AUTHORITY VAR. WIDTH UTILITY EASEMENT (P.B. 73, PG. 80-82)