

JAMES CITY COUNTY TP 33-3-01-27
NOW OR FORMERLY
ARTCRAFT - STRATFORD, L.C.
D.B. 649 P. 470

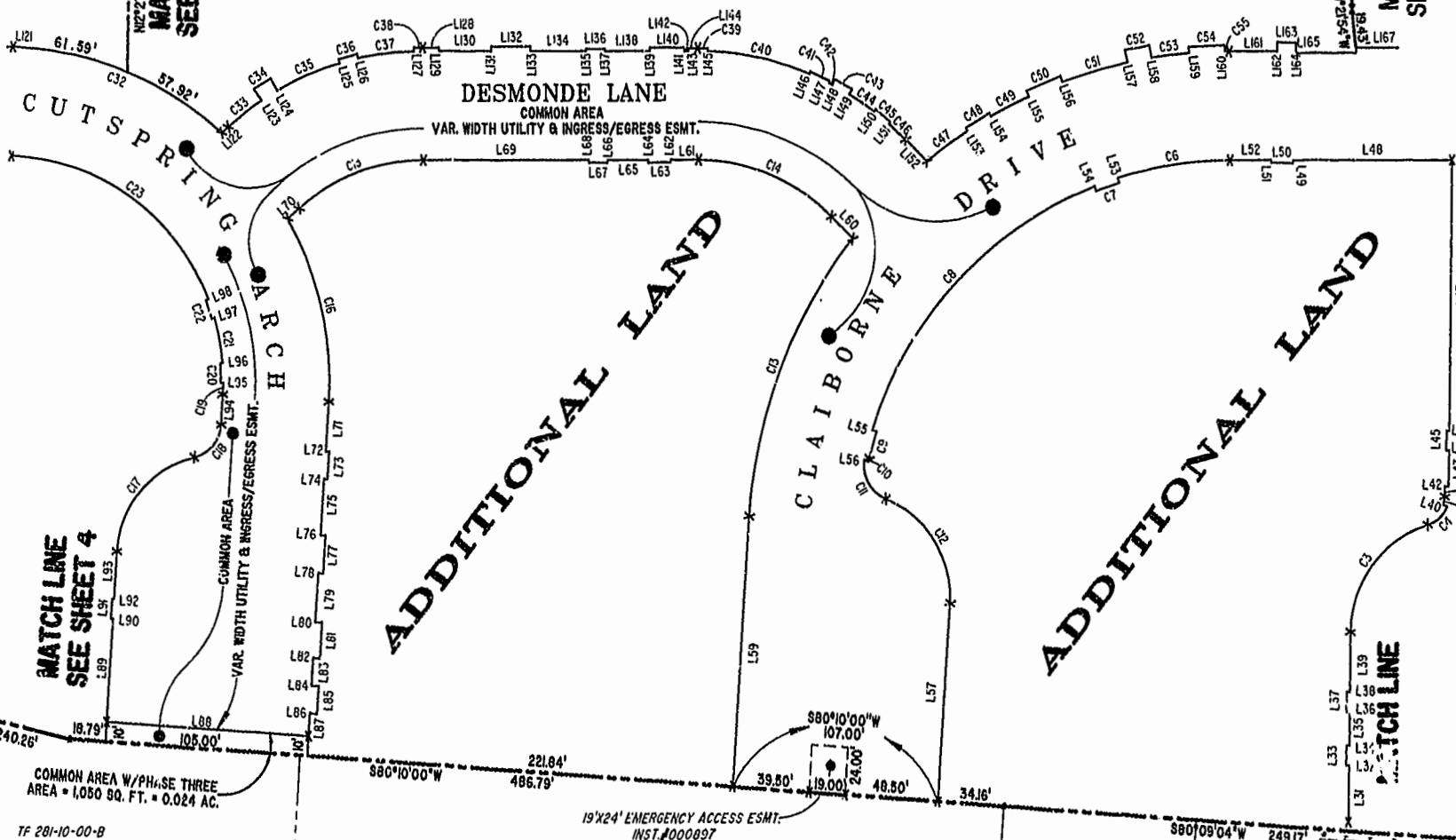
JAMES CITY COUNTY TP 33-3-01-28
NOW OR FORMERLY
GARY E. & CATHY L. NESTER
D.B. 509 P. 735

JAMES CITY COUNTY TP 33-3-01-29
NOW OR FORMERLY
GARY E. & CATHY L. NESTER
D.B. 619 P. 603

ADDITIONAL LAND

ADDITIONAL LAND

ADDITIONAL LAND



MATCH LINE
SEE SHEET 4

MATCH LINE
SEE SHEET 4

MATCH LINE
SEE SHEET 2

MATCH LINE
SEE SHEET 2

MATCH LINE

COMMON AREA W/PHASE THREE
AREA = 1,050 SQ. FT. = 0.024 AC.

TP 281-10-00-B
NOW OR FORMERLY
752 L.L.C.
INST. #980305

19'x24' EMERGENCY ACCESS ESMT.
INST. #000897

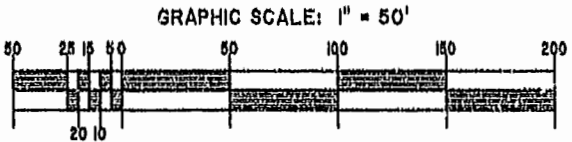
TP 282-08-00-001
NOW OR FORMERLY
752 L.L.C.
INST. #980305

TP 281-10-00-B
NOW OR FORMERLY
752 L.L.C.
INST. #980305

TP 282-08-00-001
NOW OR FORMERLY
752 L.L.C.
INST. #980305

City of Williamsburg & County of James City
Circuit Court: This PLAT was recorded on
August 19, 2002
at 1:35 AM (PM) PB 87 PG 34-38
DOCUMENT # 051492
BETSY B. WOOLRIDGE, CLERK
C. Kevin Felt, Dep. Clerk

EXHIBIT "A"
CLAIBORNE
(A CONDOMINIUM COMMUNITY)
PHASE FOUR



Hassel & Polkes, P.C. Engineers Surveyors Planners Chesapeake, VA 23320 (757) 547-9531	SIZE C	CONTRACT NO 114E/16	DISK/BOX PH-4-BLD3-15.DWG	FILENAME REV.
SCALE: 1" = 50'		DATE: 08/07/02		SHEET 3 of 5