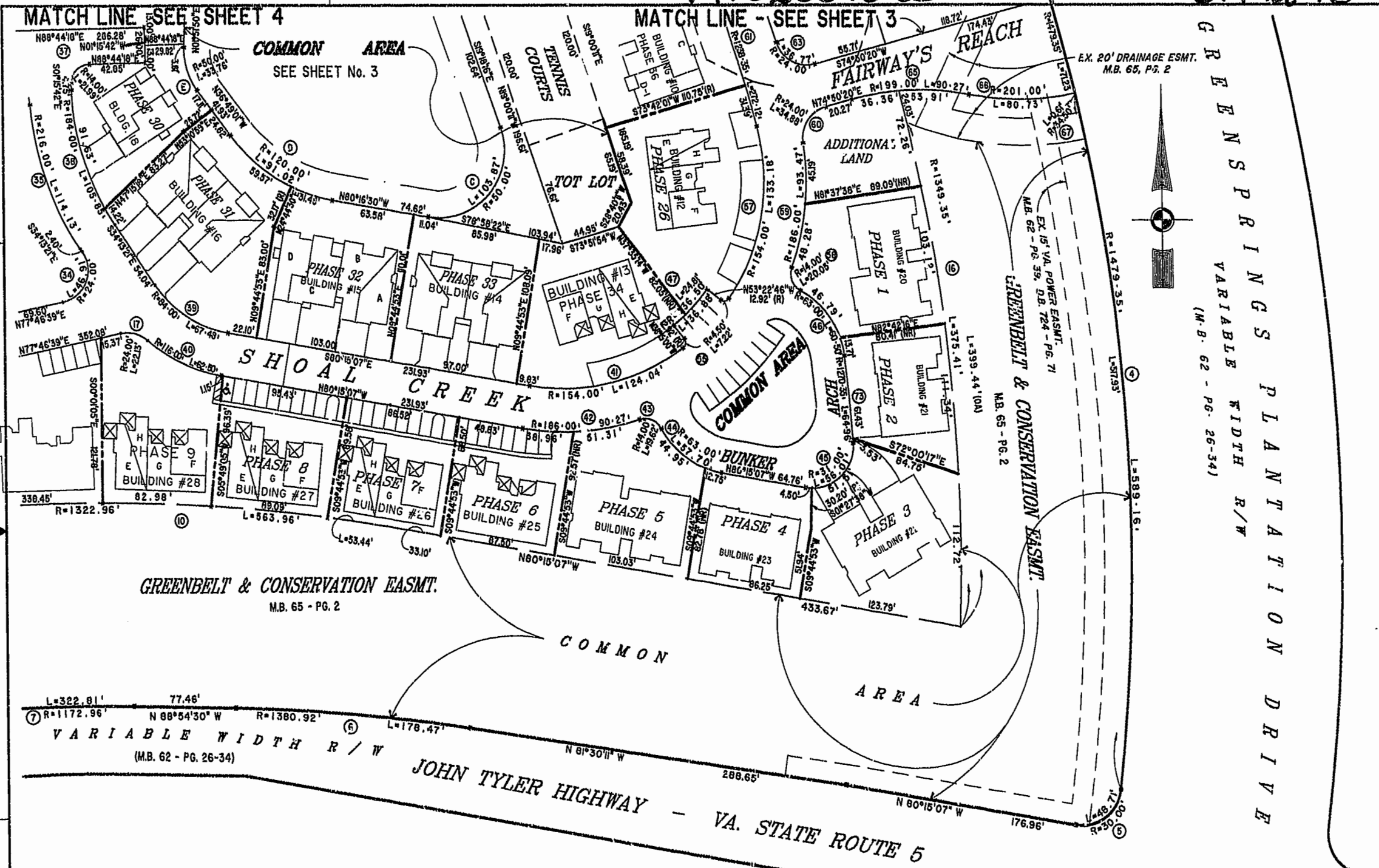
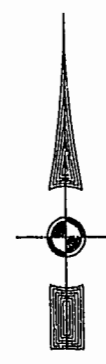


#020018083

87 PAGE 18



GREENSPRINGS PLANTATION DRIVE
 VARIABLE WIDTH R/W
 (M.B. 62 - PG. 26-34)



L=1479.35'
 L=589.16'
 L=399.44'(10A)
 L=375.41'
 L=399.44'(10A)

EXHIBIT "A" PHASE 26
 FAIRWAYS VILLAS
 AT
 GREENSPRINGS, A CONDOMINIUM
 FOR
 GREENSPRINGS DEVELOPMENT, L.C.
 BERKELEY DISTRICT JAMES CITY COUNTY, VIRGINIA



City of Williamsburg & County of James City
 Circuit Court: This PLAT was recorded on
 August 7, 2002
 at 2:22 AM PG 27 PG 17-22
 DOCUMENT # 020018083
 BETSY B. WOOLRIDGE, CLERK
 C. Allen Fee, Dep. Clerk

Hassell & Polkes, P.C. Engineers Surveyors Planners Chesapeake, VA 23320 (757) 547-3131	SIZE: C CONTRACT NO: 95-079	DISK/BOX: 6A6/16 REF: 18/13	FILENAME: FAIRWY26.DWG EWAYPLAT.DWG	REV.
SCALE: 1"=50'	DATE: 07/26/02	SHEET 2 of 6		