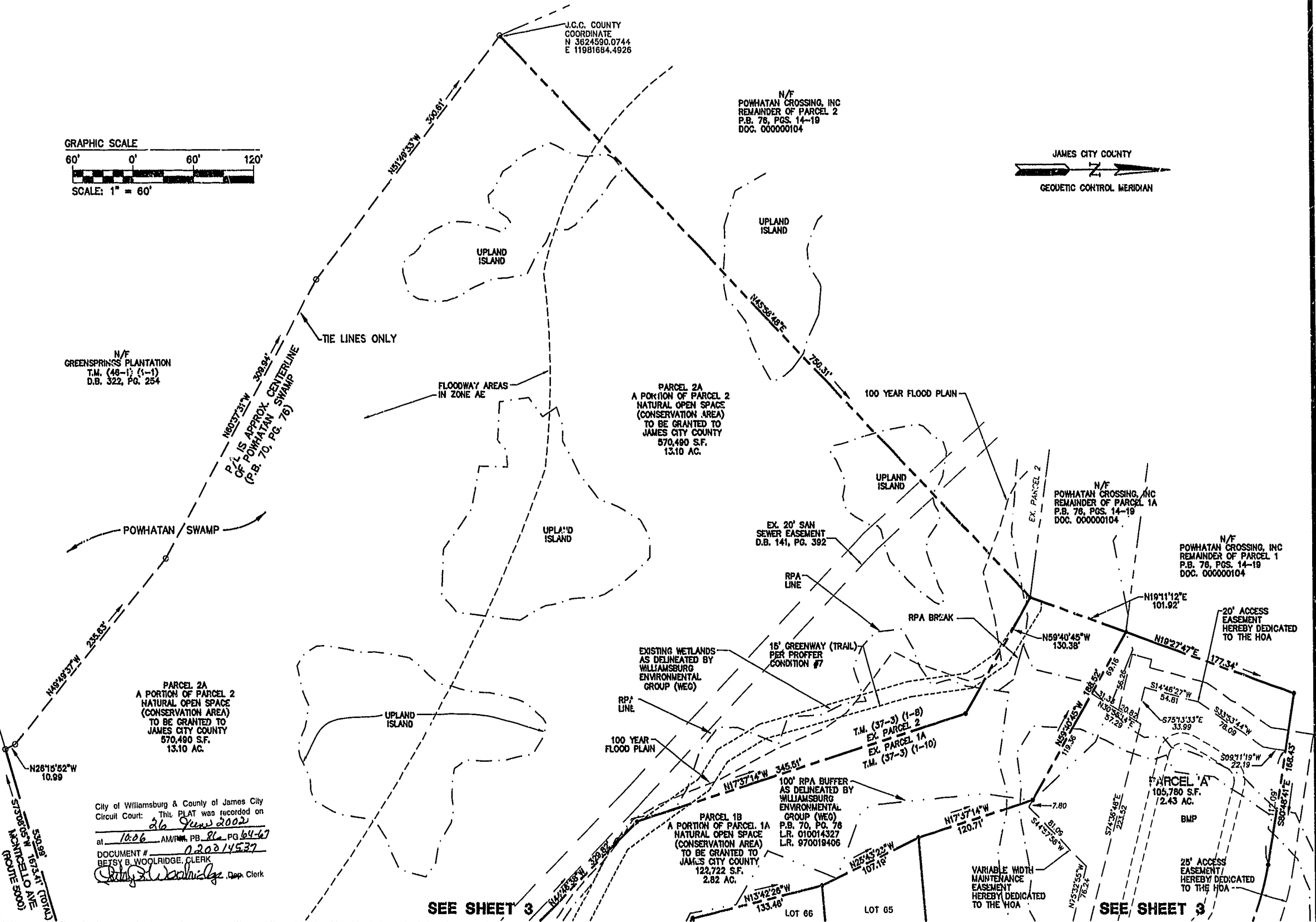


J.C.C. COUNTY
COORDINATE
N 3824590.0744
E 11981684.4926

N/F
POWHATAN CROSSING, INC
REMAINDER OF PARCEL 2
P.B. 76, PGS. 14-19
DOC. 000000104

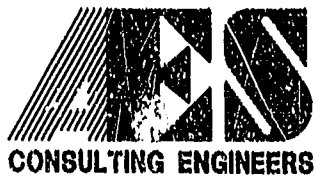
N/F
GREENSPRING PLANTATION
T.M. (48-1) (1-1)
D.B. 322, PG. 254



City of Williamsburg & County of James City
Circuit Court: This PLAT was recorded on
26 June 2002
at 10:06 AM/TM, PB 86 PG 64-67
DOCUMENT # 020214537
BETSY B. WOOLRIDGE, CLERK
Betsy B. Woolridge Dep. Clerk

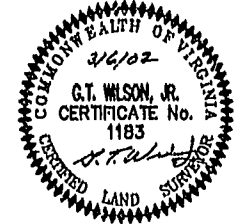
SEE SHEET 3

SEE SHEET 3



5248 Olde Towne Road, Suite 1
Williamsburg, Virginia 23188
(757) 253-0040
Fax (757) 220-8994

PLAT OF SUBDIVISION
MONTICELLO WOODS
LOTS 1-5 AND 55-73
OWNED BY: POWHATAN CROSSING, INC.
BERKELEY DISTRICT JAMES CITY COUNTY VIRGINIA



No.	DATE	REVISION / COMMENT / NOTE	BY
3	5/20/02	REVISED PER COUNTY COMMENTS	JFS
2	4/19/02	REVISED PER VDOT	JFS
1	4/16/02	REVISED PER COUNTY COMMENTS	JFS

Designed	Drawn
AES	JFS
Scale	Date
1" = 60'	3/6/02
Project No.	
8130-1	
Drawing No.	
4 OF 4	