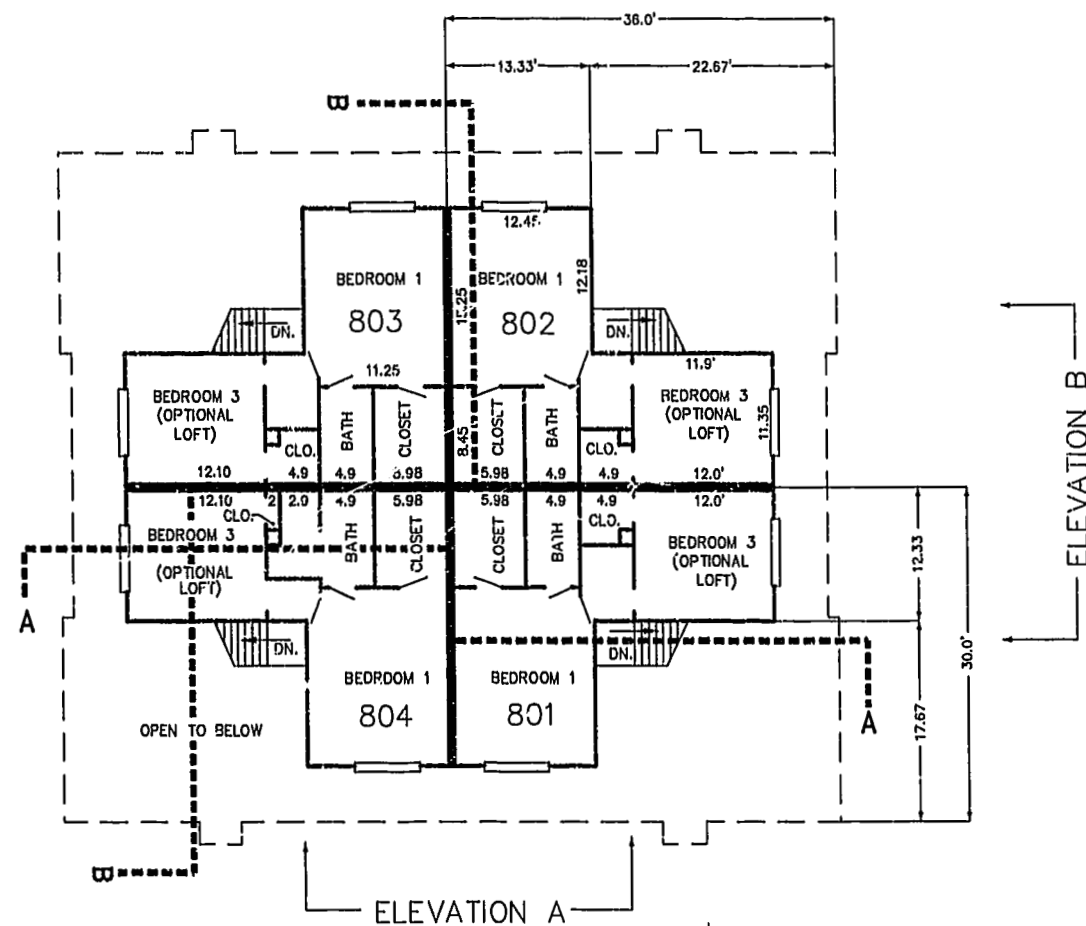


FIRST FLOOR PLAN
(UNIT #802 IS TYPICAL)



SECOND FLOOR PLAN
(UNIT #802 IS TYPICAL)

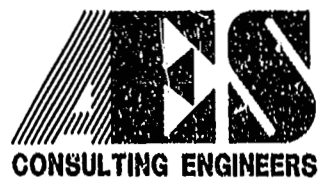


ELEVATION A



ELEVATION B

06.03.02-11.08 8395p275.dwg JFS



5248 Olde Towne Road, Suite 1
 Williamsburg, Virginia 23188
 (757) 253-0040
 Fax (757) 220-8994

PLAT OF CONDOMINIUM
 WESTGATE AT WILLIAMSBURG,
 A CONDOMINIUM
 PHASE TWENTY-SEVEN
 OWNED BY: 752 L.L.C.,
 A VIRGINIA LIMITED LIABILITY COMPANY
 CITY OF WILLIAMSBURG VIRGINIA



No.	DATE	REVISION / COMMENT / NOTE	BY

City of Williamsburg & County of James City
 Circuit Court: This PLAT was recorded on
 14 Jan 2002
 at 3:14 AM PM, PB 86, PG 53-58
 DOCUMENT # 021065
 BETSY B. WOOLRIDGE, CLERK
 Betsy B. Woolridge, Dep. Clerk

Designed GTW/ADS	Drawn JFS
Scale 1" = 10'	Date 6/03/02
Project No. 8395-6	
Drawing No. 5 OF 6	