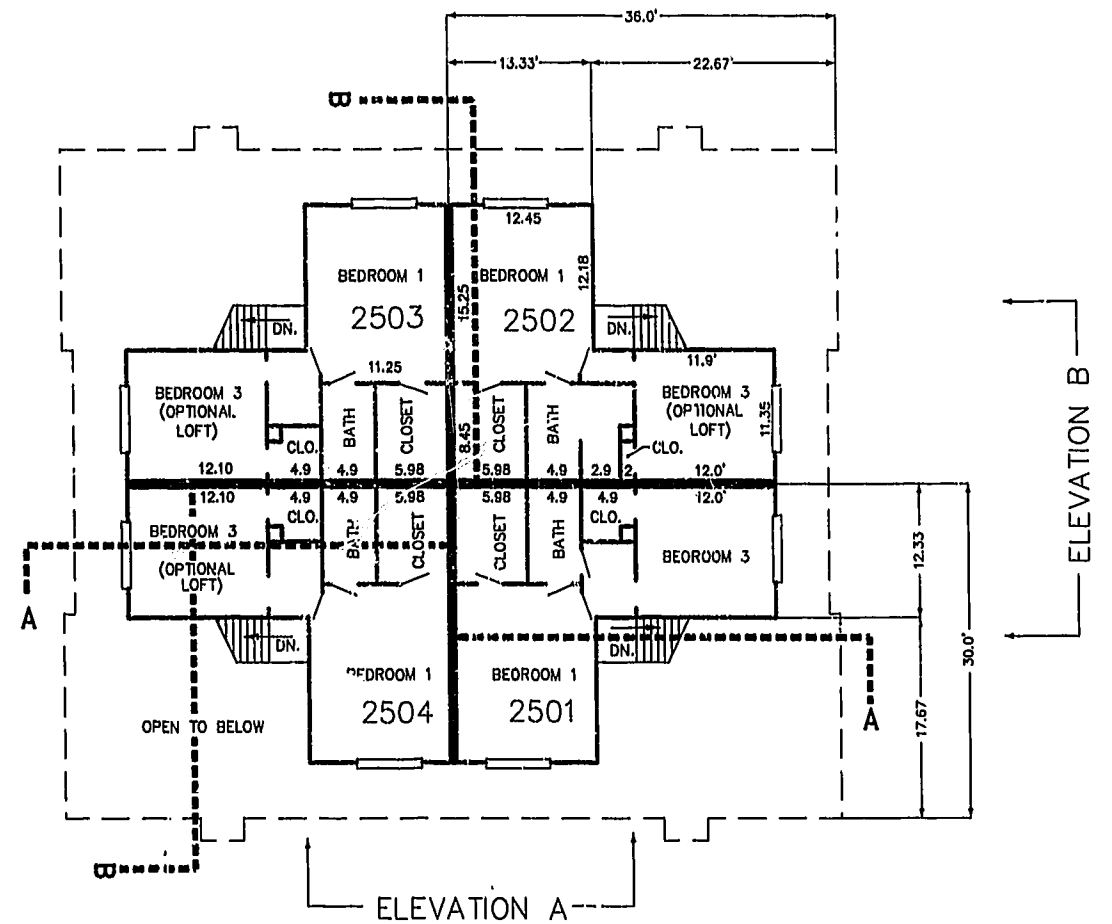


FIRST FLOOR PLAN
(UNIT #2502 IS TYPICAL)



SECOND FLOOR PLAN
(UNIT #2502 IS TYPICAL)

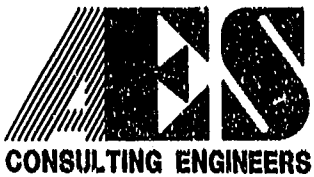


ELEVATION A



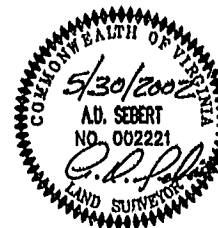
ELEVATION B

05.31.02-08:44 8395p255.dwg JFS



5248 Olde Towne Road, Suite 1
 Williamsburg, Virginia 23188
 (757) 253-0040
 Fax (757) 220-8994

PLAT OF CONDOMINIUM
 WESTGATE AT WILLIAMSBURG,
 A CONDOMINIUM
 PHASE TWENTY-FIVE
 OWNED BY: 752 L.L.C.,
 A VIRGINIA LIMITED LIABILITY COMPANY
 CITY OF WILLIAMSBURG VIRGINIA



No.	DATE	REVISION / COMMENT / NOTE	BY

Designed GTW/ADS	Drawn JFS
Scale 1" = 10'	Date 5/30/02
Project No. 8395-6	
Drawing No. 5 OF 6	