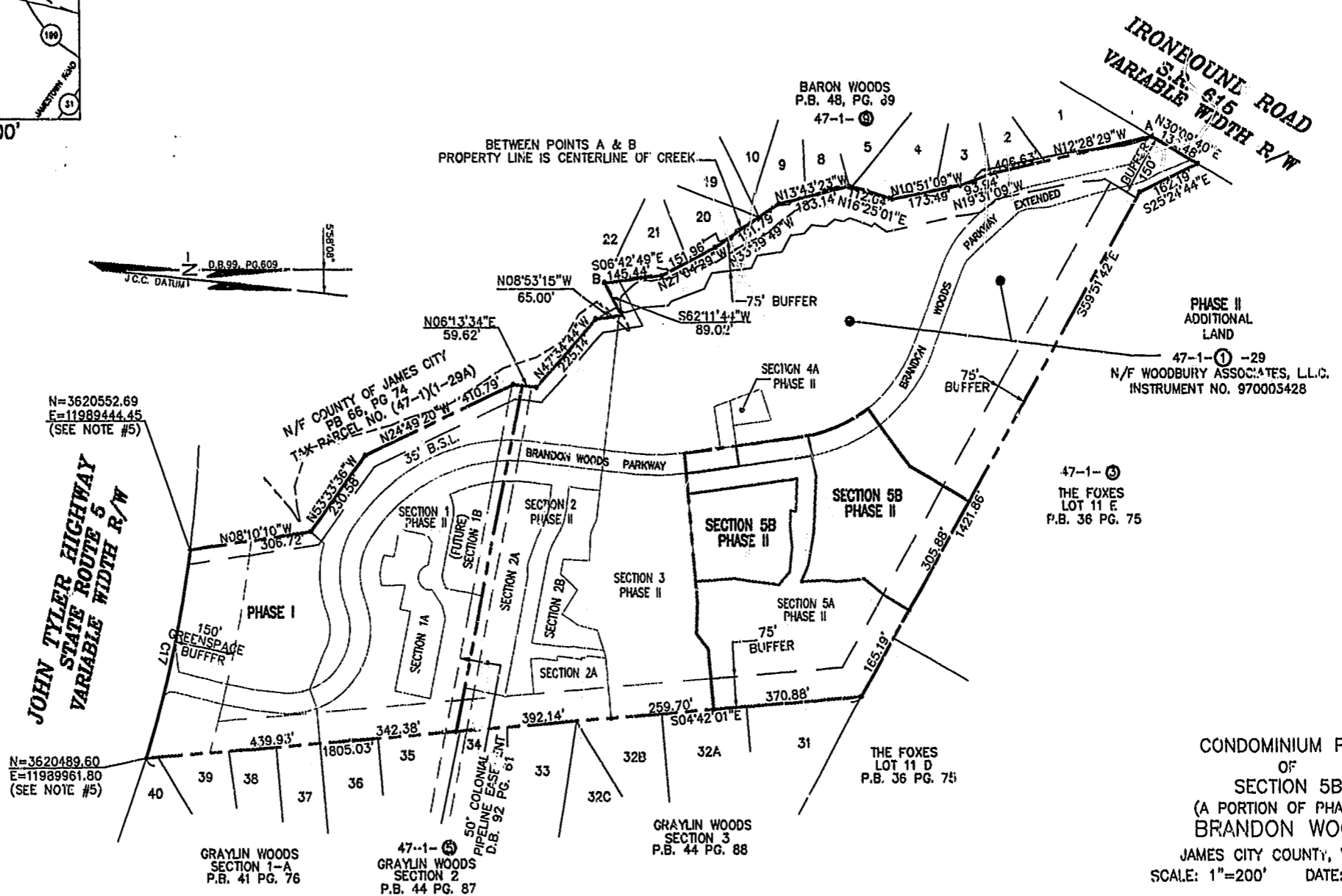


CURVE TABLE						
CURVE	LENGTH	RADIUS	TANGENT	CHORD BEARING	CHORD	DELTA
C17	521.88'	2904.79'	261.65'	N77°04'44"W	521.18'	10°17'38"



N=3620552.69
E=11989444.45
(SEE NOTE #5)

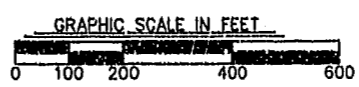
N=3620489.60
E=11989961.80
(SEE NOTE #5)

CONDOMINIUM PLAT
OF
SECTION 5B
(A PORTION OF PHASE II)
BRANDON WOODS
JAMES CITY COUNTY, VIRGINIA
SCALE: 1"=200' DATE: 5/21/02

SHEET 1 OF 5

LANDMARK DESIGN GROUP
Engineers • Planners • Surveyors
Landscape Architects • Environmental Consultants
4029 IRONBOUND ROAD SUITE 100
WILLIAMSBURG, VA 23188
TEL (757) 253-2975 FAX(757) 229-0049

City of Williamsburg & County of James City
Circuit Court: This PLAT was recorded on
30 May 2002
at 3:31 P.M. P.B. 86 PG. 31-35
DOCUMENT # 020012640
BETSY B. WOOLRIDGE, CLERK
Betsy B. Woolridge, Clerk



DRAWN BY: LFV	PROJ. NO.: 1980074-000.G1
CHKD. BY: DEW	DWG. NO.: 13296W