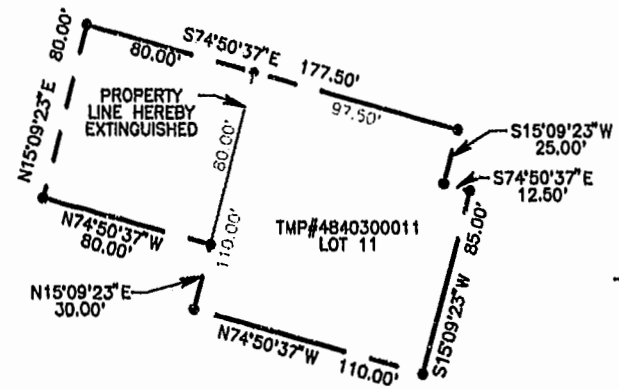
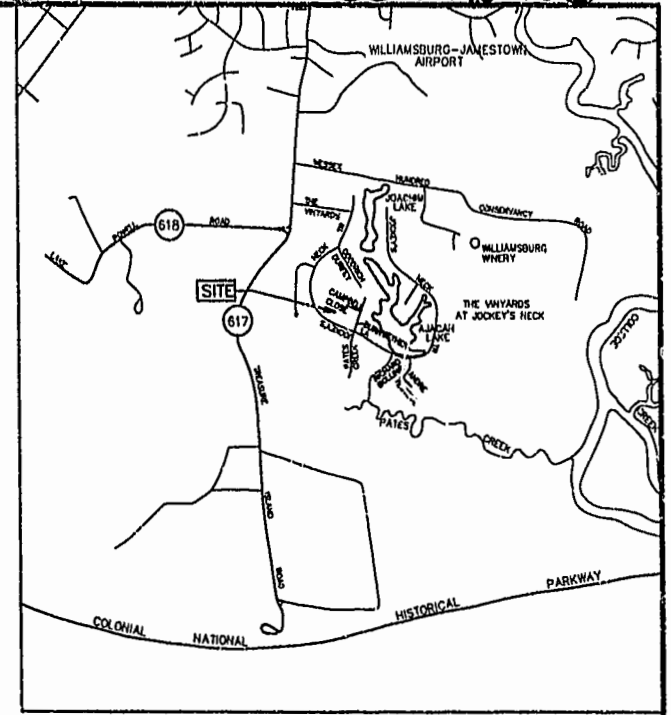




TMP#4840100011  
OPEN SPACE  
NEW AREA  
4.8317 AC.  
OLD AREA  
4.9787 AC.

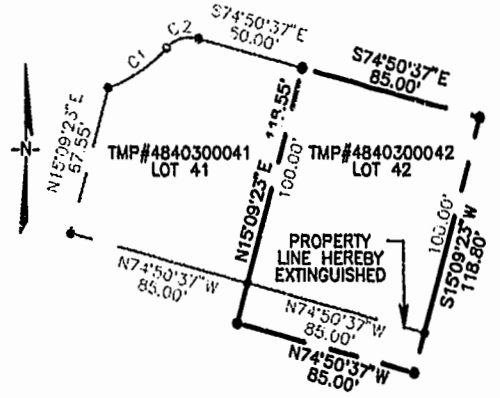


INSET A  
SCALE: 1"=50'

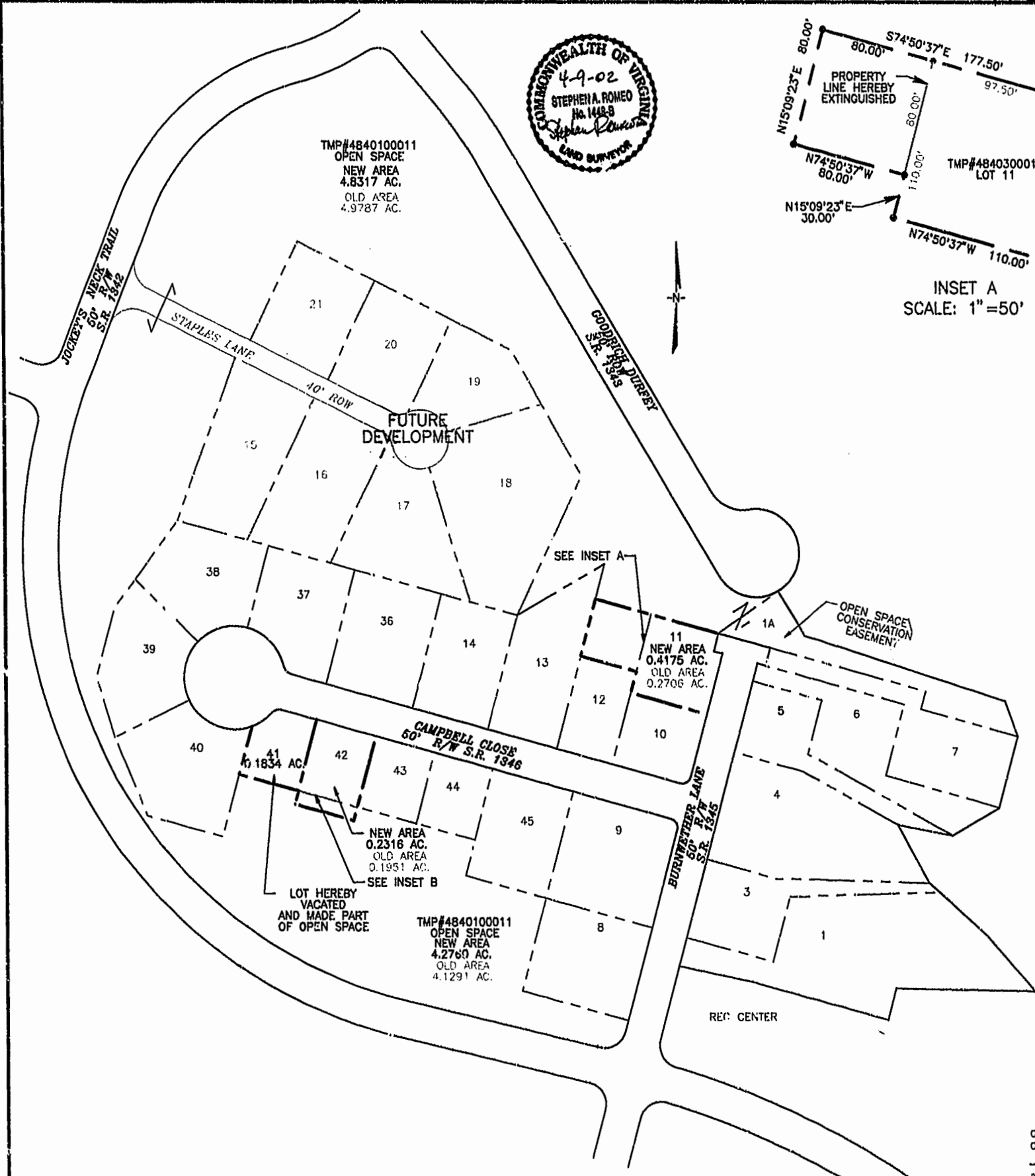


VICINITY MAP SCALE: 1"=2000'

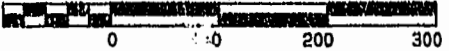
LINE	RADIUS	ARC	CHORD BEARING	CHORD	DELTA	TANGENT
C1	70.000'	33.082'	N56°46'04"E	32.775'	27°04'39"	16.856'
C2	15.000'	16.213'	N74°11'33"E	15.435'	61°55'39"	9.000'



INSET B  
SCALE: 1"=50'



GRAPHIC SCALE 1"=100'



VILLAGE HOUSING AT THE VINEYARDS  
BOUNDARY LINE ADJUSTMENT OF  
LOTS 11, 41 AND 42

JAMESTOWN DISTRICT  
JAMES CITY COUNTY, VIRGINIA  
SCALE: 1" = 100' 3-29-02  
SHEET 2 OF 2



Engineers • Planners • Surveyors  
Landscape Architects • Environmental Consultants

4029 Ironbound Road Suite 100  
Williamsburg, VA 23188  
Tel. (757) 253-2975  
Fax (757) 229-0949  
Email: lmdg@landmarkdgb.com

5544 Greenweld Road Suite 200  
Virginia Beach, VA 23462  
Tel. (757) 473-2000  
Fax (757) 497-7933  
Email: lmdg@landmarkdgb.com

City of Williamsburg & County of James City  
Circuit Court: This PLAT was recorded on  
17 July 2002  
at 3:17 P.M. PB 86 PG 21 of 25  
DOCUMENT # 020011863  
BETSY B. WOOLRIDGE, CLERK  
Betsy Woolridge, Reg. Clerk