

# 02001275

86 PAGE 15

AMENDED PLAT OF SUBDIVISION  
**WATERFORD**  
 AT  
**POWHATAN SECONDARY**  
 PHASE THIRTY-THREE  
 BERKELEY DISTRICT  
 JAMES CITY COUNTY, VIRGINIA

DATE: 10/21/98 SHEET 2 OF 3 SCALE: 1"=100'

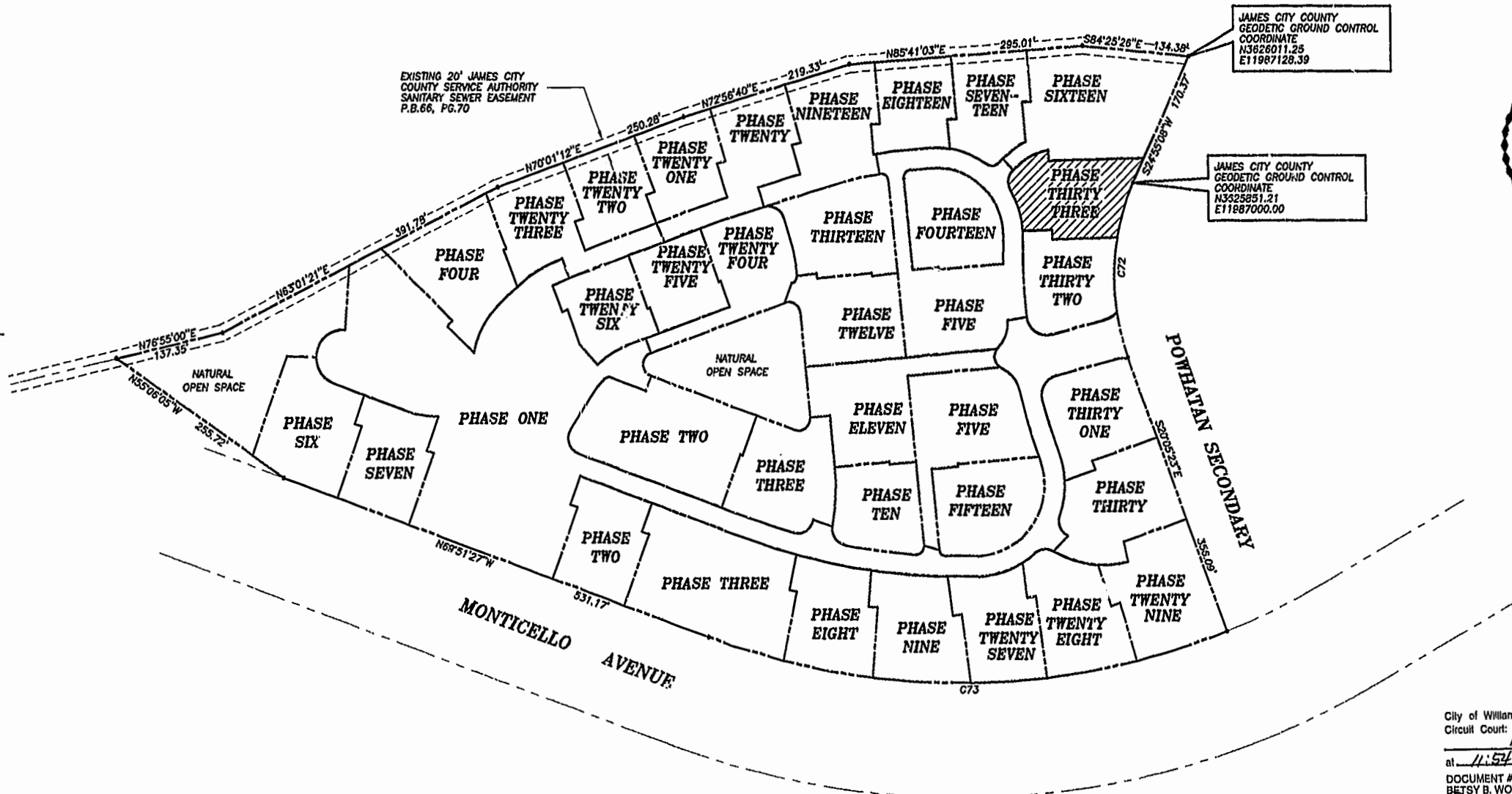
PROJECT NO: 97-008 DRAWN BY: SJB



**SLEDD & ASSOCIATES, P.C.**  
 ENGINEERS PLANNERS SURVEYORS  
 11832 ROCK LANDING DRIVE, SUITE 203  
 NEWPORT NEWS, VIRGINIA 23606  
 (757) 873-3398

00°32'24"  
 JAMES CITY COUNTY  
 GEODETIC GROUND CONTROL  
 MERIDIAN  
 PLAT BOOK 66, PAGE 70

NOW OR FORMERLY  
 POWHATAN ENTERPRISES, INC.



City of Williamsburg & County of James City  
 Circuit Court: This PLAT was recorded on  
 13 May 2002  
 at 11:54 AM, PB 86, PG 14-16  
 DOCUMENT # 02001275  
 BETSY B. WOOLRIDGE, CLERK

**CURVE DATA**

NUMBER	D. JA	RADIUS	LENGTH	TANGENT	CHORD	CHORD BEARING
C72	45°00'31"	280.00'	219.95'	116.00'	214.34'	S02°24'52"W
C73	41°26'14"	924.91'	668.91'	349.84'	654.43'	S89°25'26"W

