

PREVIOUSLY RELEASED TO JAMESTOWN, LLC.

FUTURE BMP/POND AREA

PROPOSED 100' AND VARIABLE BOULEVARD STYLE COMMON INGRESS/EGRESS RIGHT OF WAY BETWEEN GREENSPRINGS PLANTATION, INC. AND JAMESTOWN, LLC. 4.41± ACRES (TOTAL)

FUTURE DEVELOPMENT AREA PHASE-IV

FUTURE WILLIAMSBURG NATIONAL GOLF CLUB HOLE #B-9

REMAINING AREA HEREBY RELEASED FROM DEED OF TRUST

BALANCE OF UNRELEASED LAND RESERVED PARCEL #6 25.36± ACRES

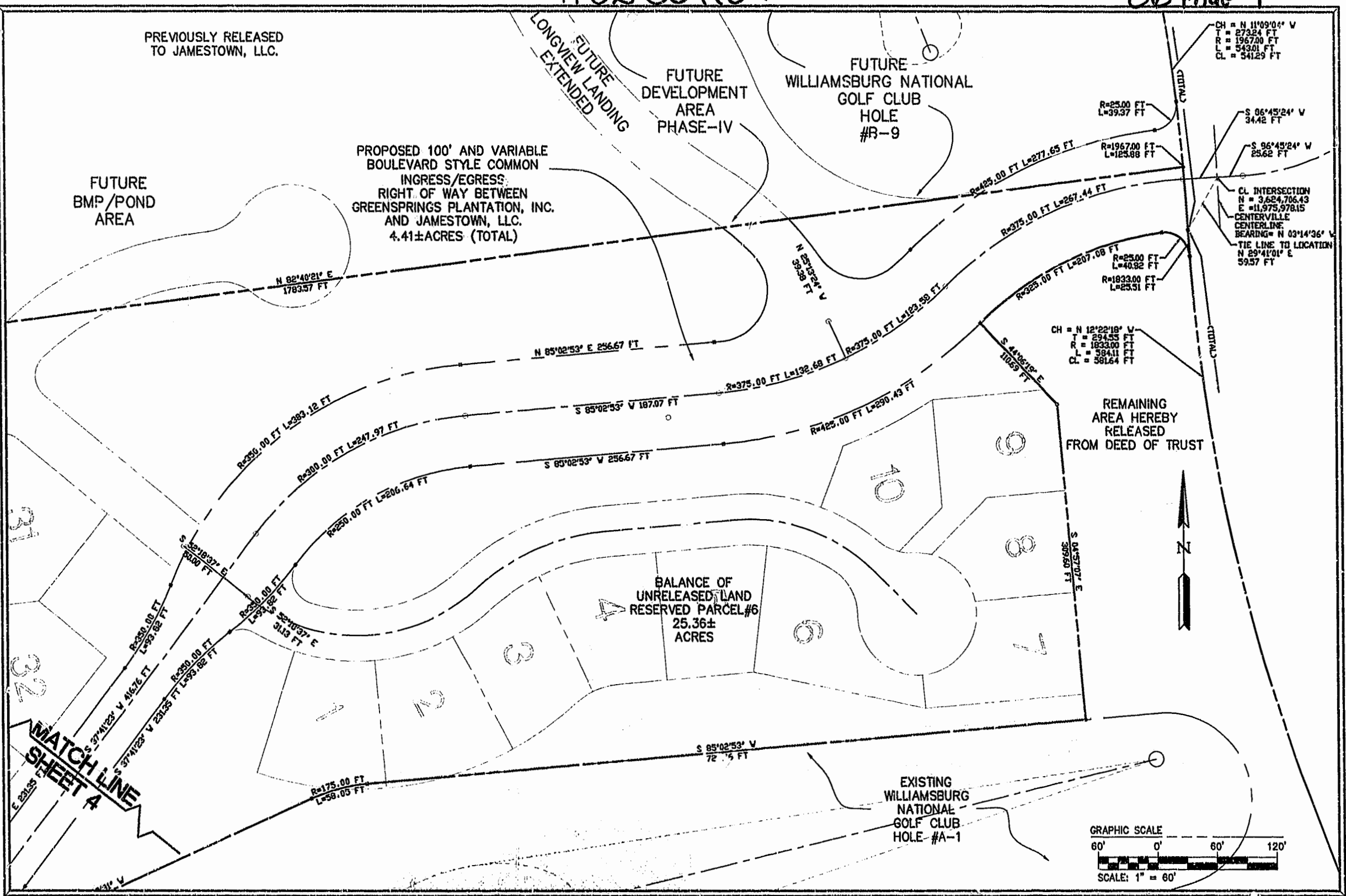
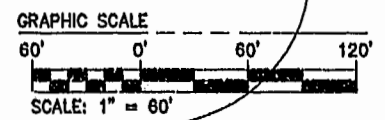
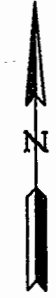
EXISTING WILLIAMSBURG NATIONAL GOLF CLUB HOLE #A-1

CH = N 11°09'06" V
T = 273.24 FT
R = 1967.00 FT
L = 543.01 FT
CL = 541.29 FT

S 86°45'24" V
34.42 FT
S 86°45'24" W
25.62 FT

CL INTERSECTION
N = 3,624,706.43
E = 11,975,978.15
CENTERVILLE CENTERLINE
BEARING = N 03°14'36" V
TIE LINE TO LOCATION
N 29°41'01" E
59.57 FT

CH = N 12°22'18" V
T = 294.55 FT
R = 1833.00 FT
L = 584.11 FT
CL = 581.64 FT

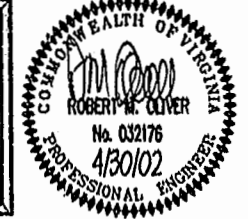


MATCH LINE SHEET 4



Jamestown
MANAGEMENT COMPANY, LLC
DEVELOPMENT PLANNING, MANAGEMENT AND ENGINEERING
213 INGRAM ROAD WILLIAMSBURG, VIRGINIA 23188
(757) 220-0858 OFFICE (757) 220-0916 FAX

GREENSPRINGS WEST
DEED OF TRUST
RELEASE AND RESERVATION PLAT
FROM GREENSPRINGS PLANTATION
TO JAMESTOWN, LLC
BERKELEY DISTRICT JAMES CITY COUNTY VIRGINIA



NO.	REVISION	DATE
	City of Williamsburg & County of James City Circuit Court: This PLAT was recorded on 9 May 2002	
	at 4:02 AM, PB 86, PG 5-9	
	DOCUMENT # 220011077	
	BETSY B. WOOLRIDGE, CLERK	
	Mona Bauril, Dep. Clerk	

DESIGNED: CWG
DRAWN: CWG
SCALE: 1"=60'
PROJECT NUMBER
1106-00
DRAWING NUMBER
RP-3-05