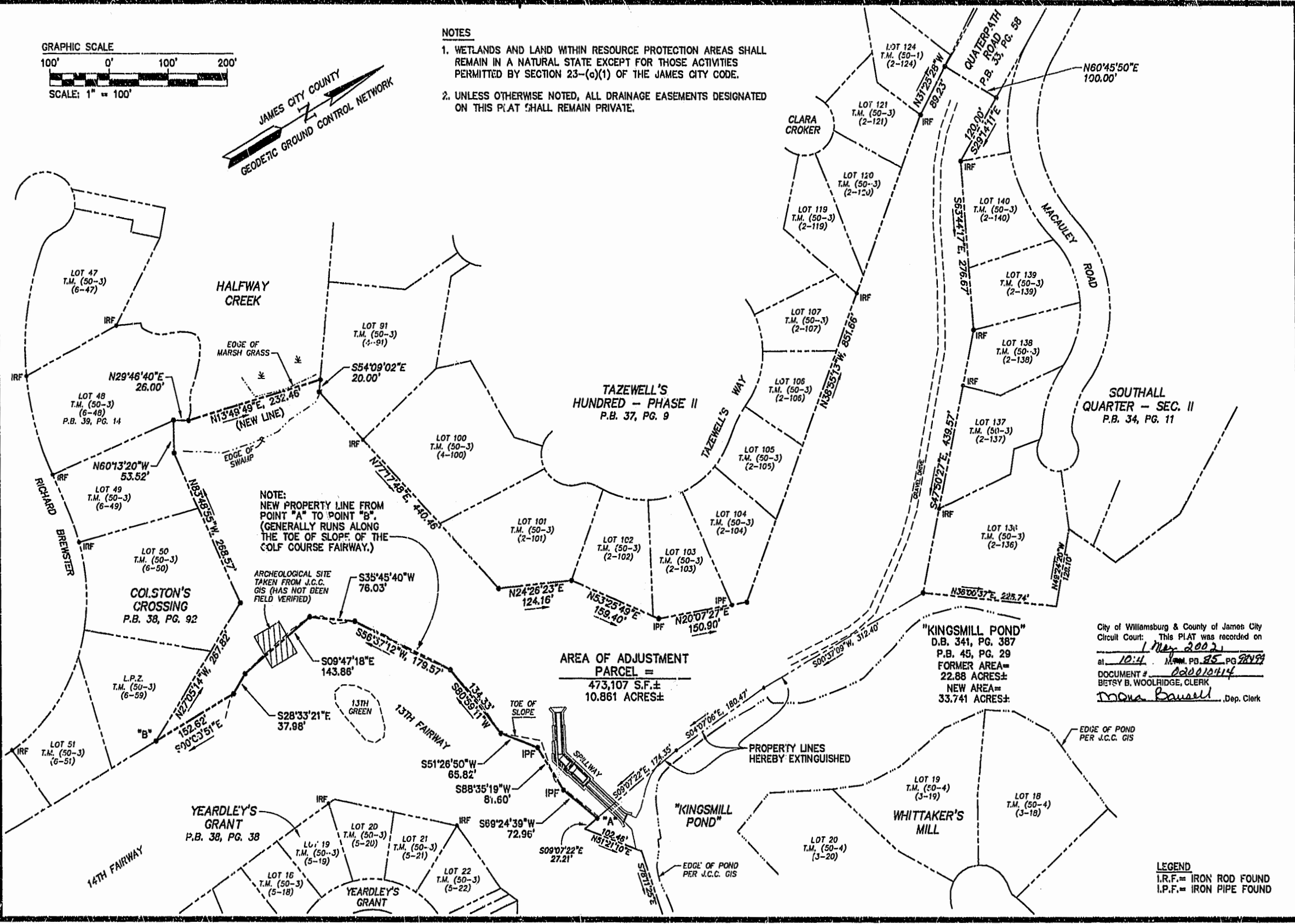


NOTES

1. WETLANDS AND LAND WITHIN RESOURCE PROTECTION AREAS SHALL REMAIN IN A NATURAL STATE EXCEPT FOR THOSE ACTIVITIES PERMITTED BY SECTION 23-(c)(1) OF THE JAMES CITY CODE.
2. UNLESS OTHERWISE NOTED, ALL DRAINAGE EASEMENTS DESIGNATED ON THIS PLAT SHALL REMAIN PRIVATE.



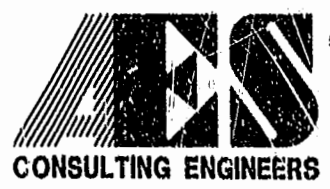
NOTE:
NEW PROPERTY LINE FROM POINT "A" TO POINT "B", (GENERALLY RUNS ALONG THE TOE OF SLOPE OF THE GOLF COURSE FAIRWAY.)

AREA OF ADJUSTMENT PARCEL =
473,107 S.F. ±
10.861 ACRES ±

"KINGSMILL POND"
D.B. 341, PG. 387
P.B. 45, PG. 29
FORMER AREA =
22.88 ACRES ±
NEW AREA =
33.741 ACRES ±

City of Williamsburg & County of James City
Circuit Court: This PLAT was recorded on
1 May 2002
at 10:4 AM, P.B. 85, PG. 99
DOCUMENT # 02010414
BETSY B. WOOLRIDGE, CLERK
Mona Bausell, Dep. Clerk

LEGEND
I.R.F. = IRON ROD FOUND
I.P.F. = IRON PIPE FOUND



5248 Olde Towne Road, Suite 1
Williamsburg, Virginia 23188
(757) 253-0040
Fax (757) 220-8994

**PLAT SHOWING BOUNDARY LINE ADJUSTMENT
BETWEEN THE PROPERTIES OF
BUSCH PROPERTIES, INC.
AND
KINGSMILL COMMUNITY SERVICES ASSOCIATION**

ROBERTS DISTRICT JAMES CITY COUNTY VIRGINIA



No.	DATE	REVISION / COMMENT / NOTE	BY
1	4/15/02	REVISED PER COUNTY COMMENT LETTER DATED 4/12/02	CMA

Designed GTW/CMA	Drawn CMA
Scale 1"=100'	Date 12/10/01
Project No. 7753-13	
Drawing No. 2 OF 2	