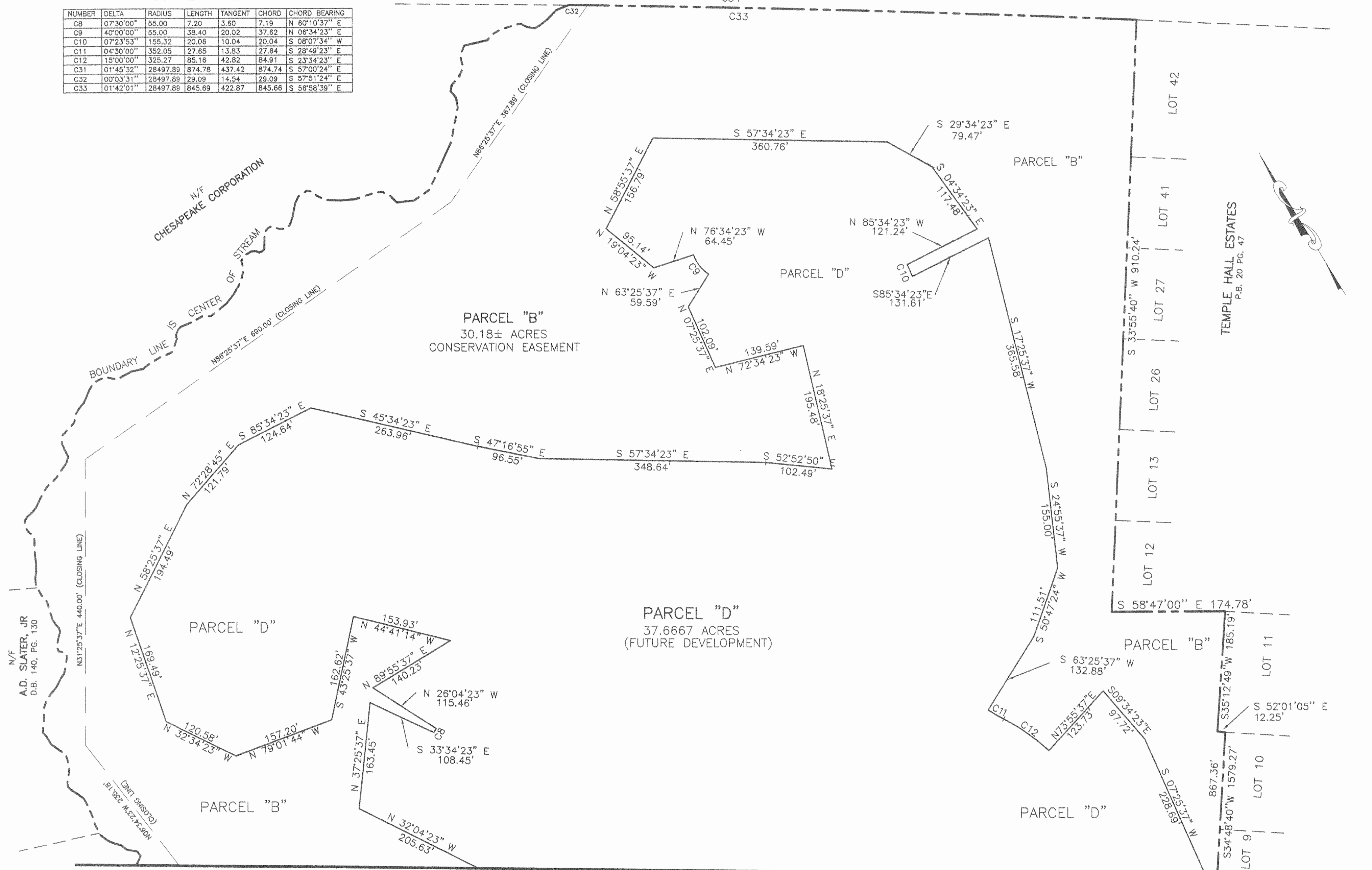


CURVE TABLE

NUMBER	DELTA	RADIUS	LENGTH	TANGENT	CHORD	CHORD BEARING
CB	07°30'00"	55.00	7.20	3.60	7.19	N 60°10'37" E
C9	40°00'00"	55.00	38.40	20.02	37.62	N 06°34'23" E
C10	07°23'53"	155.32	20.08	10.04	20.04	S 08°07'34" W
C11	04°30'00"	352.05	27.65	13.83	27.64	S 28°49'23" E
C12	15°00'00"	325.27	85.16	42.82	84.91	S 23°34'23" E
C31	01°45'32"	28497.89	874.78	437.42	874.74	S 57°00'24" E
C32	00°03'31"	28497.89	29.09	14.54	29.09	S 57°51'24" E
C33	01°42'01"	28497.89	845.89	422.87	845.86	S 56°58'39" E

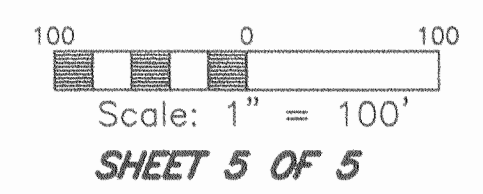
INTERSTATE 64 (E.B.L.)



COMPS: AJP  
 DWG. NO.: 96091SUB3  
 CAD: SMF  
 JOB NO.: 96091-07  
 CHECK: AJP

MATCH LINE SEE SHEET 4

City of Williamsburg & County of James City  
 Circuit Court: This PLAT was recorded on  
April 29 2002  
 at 11:05 AM/PM, PB 85, PG 92-94  
 DOCUMENT # 020010128  
 BETSY B. WOOLRIDGE, CLERK  
Mona Bausell, Dep. Clerk



SECTION ONE  
 "FENWICK HILLS"  
 STONEHOUSE DISTRICT  
 JAMES CITY COUNTY, VIRGINIA  
 SEPTEMBER 7, 2001  
 REVISED: JANUARY 14, 2002

