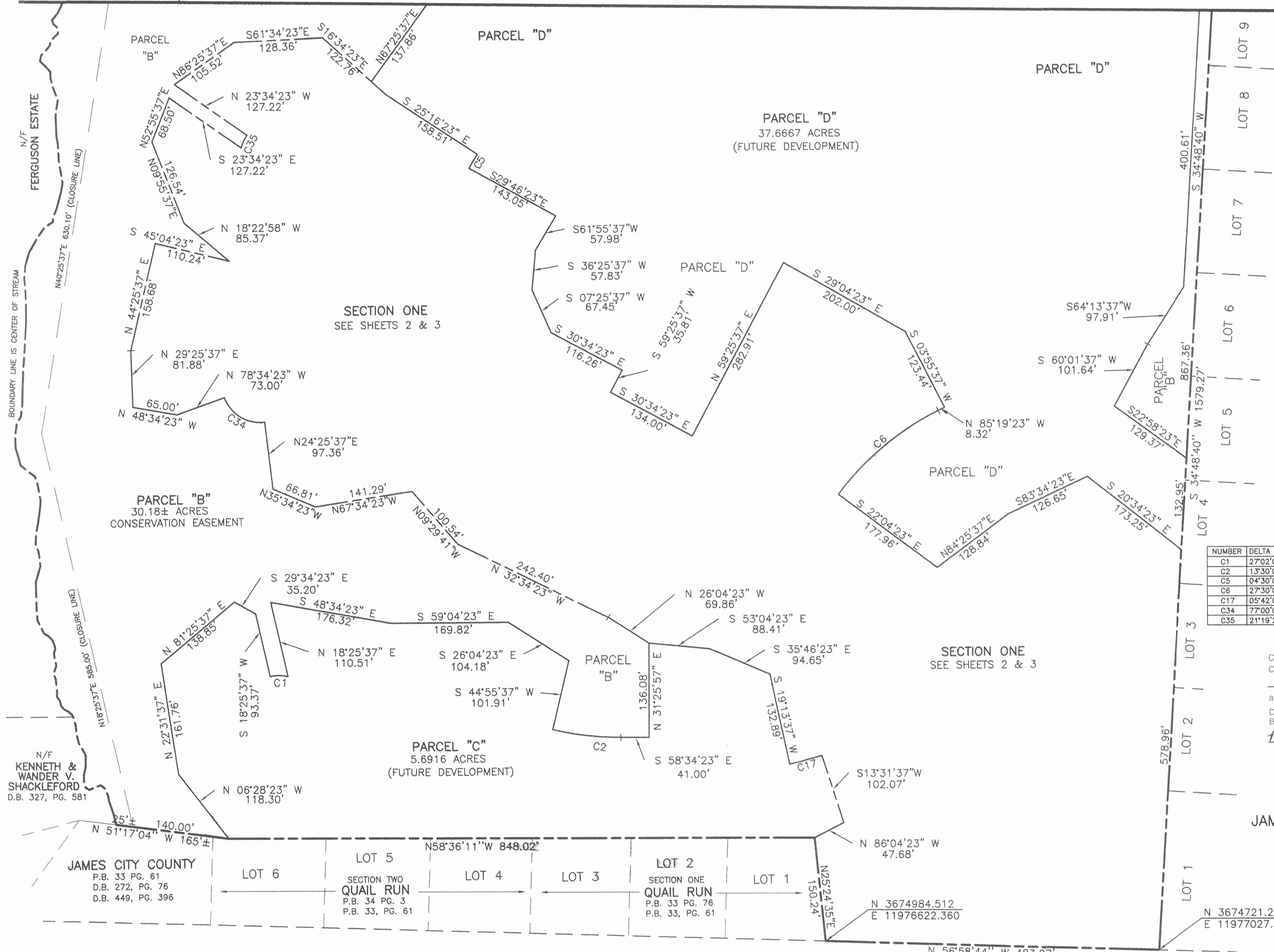


MATCH LINE SEE SHEET 5



COMPS: AJP
 DWG. NO.: 96091SUB3
 CAD: SMF
 JOB NO.: 96091-07
 CHECK: AJP

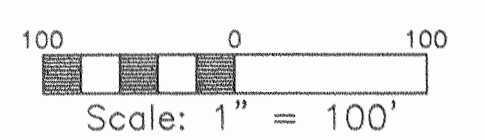
TEMPLE HALL ESTATES
 P.B. 18 PG. 12

CURVE TABLE

NUMBER	DELTA	RADIUS	LENGTH	TANGENT	CHORD	CHORD BEARING
C1	27°02'00"	55.00	25.95	13.22	25.71	S 58°03'19" E
C2	13°30'00"	423.22	99.72	50.09	99.49	S 51°49'23" E
C5	04°30'00"	296.33	23.27	11.64	23.27	S 62°28'37" W
C6	27°30'00"	401.15	192.54	98.16	190.69	S 81°40'37" W
C17	05°42'00"	489.01	48.65	24.34	48.63	S 73°37'23" E
C34	77°00'00"	55.00	73.91	43.75	68.48	N 27°04'23" W
C35	21°19'25"	55.00	20.47	10.35	20.35	N 55°45'54" E

City of Williamsburg & County of James City
 Circuit Court: This PLAT was recorded on
April 29, 2005
 at 11:05 AM/PM, P.B. 85 PG. 92-96
 DOCUMENT # 020010128
 BETSY B. WOOLRIDGE, CLERK
Mona Bausell Dep. Clerk

SECTION ONE
"FENWICK HILLS"
 STONEHOUSE DISTRICT
 JAMES CITY COUNTY, VIRGINIA
 SEPTEMBER 7, 2001
 REVISED: JANUARY 14, 2002



N 3674721.264
 E 11977027.399
SHEET 4 OF 5

