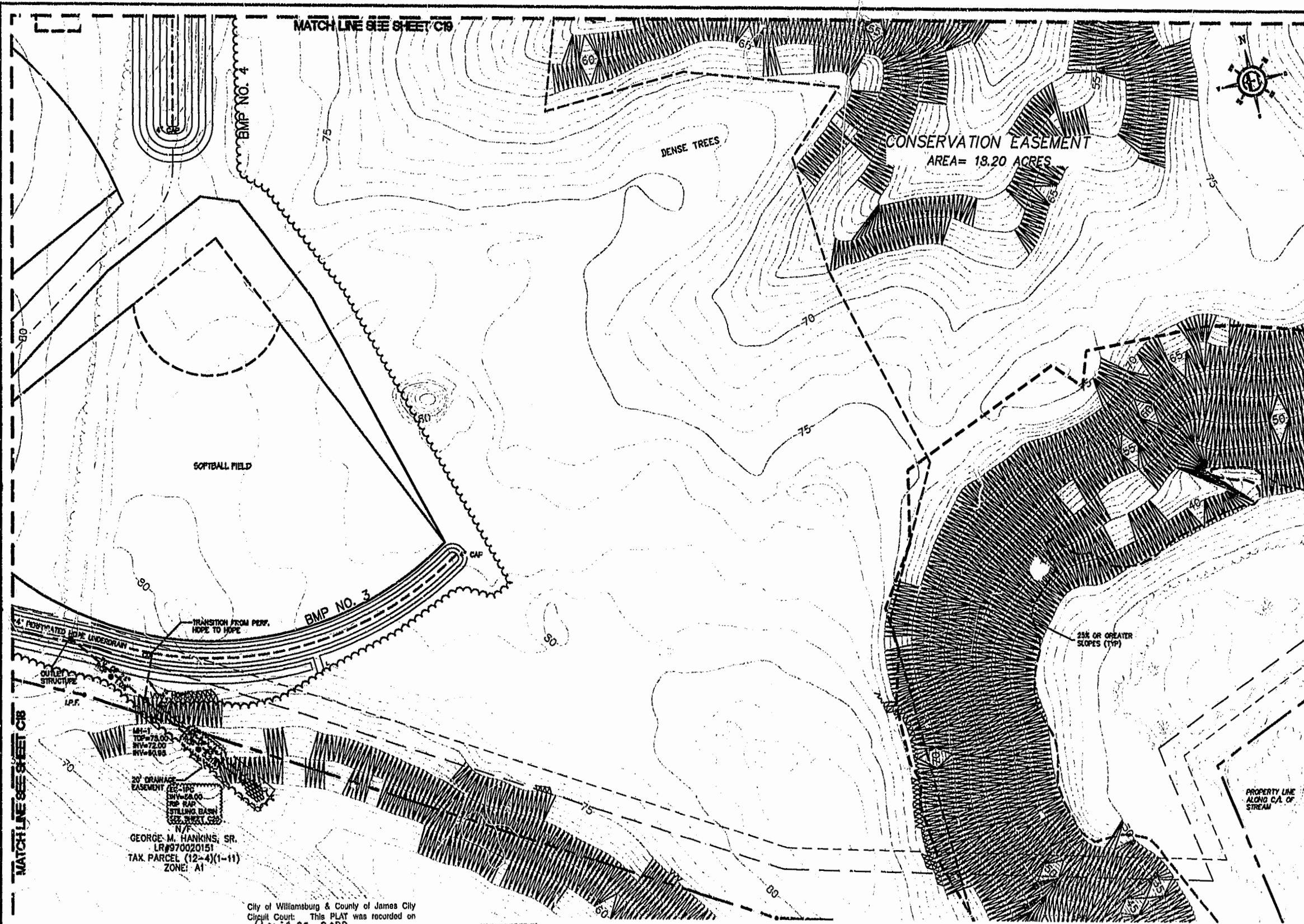


85 PAGE 89

#020009960



City of Williamsburg & County of James City
Circuit Court: This PLAT was recorded on
April 25, 2002
at 12:14 AM/PM, PB 85 PG 89
DOCUMENT # 020009960
BEYSY B. WOOLRIDGE, CLERK
Dawn R. Martin, Dep. Clerk

PLAT RECORDED IN
P.D. NO. 85 PAGE 89

BEFORE DIGGING CALL 1-888 UTILITY
OF VIRGINIA AT 1-800-662-7001

WILLIAMSBURG CHRISTIAN
ACADEMY

UTILITY PLAN

Rickmond Engineering, Inc.
Engineering Land Surveying
1541 Lakeside Trl
Williamsburg, VA 23185
Voice: (540)349-7730
Fax: (540)349-7731
www.rickmond.com

D. Martin
Designed By: RAH
Drawn By: RAH
Scale: N.T.S.
Date: 10.24.01

NO.	BY	REV	FOR	DATE	DESCRIPTION
1	RAH	REV	FOR	04/25/02	01158
2	RAH	REV	FOR	04/25/02	01158
3	RAH	REV	FOR	04/25/02	01158

Job Number: 01158
Sheet No.: C20