

AMENDED PLAT OF SUBDIVISION
WATERFORD
AT
POWHATAN SECONDARY
PHASE THIRTY-TWO
BERKELEY DISTRICT
JAMES CITY COUNTY, VIRGINIA

DATE: 10/21/98 SHEET 2 OF 3 SCALE: 1"=100'

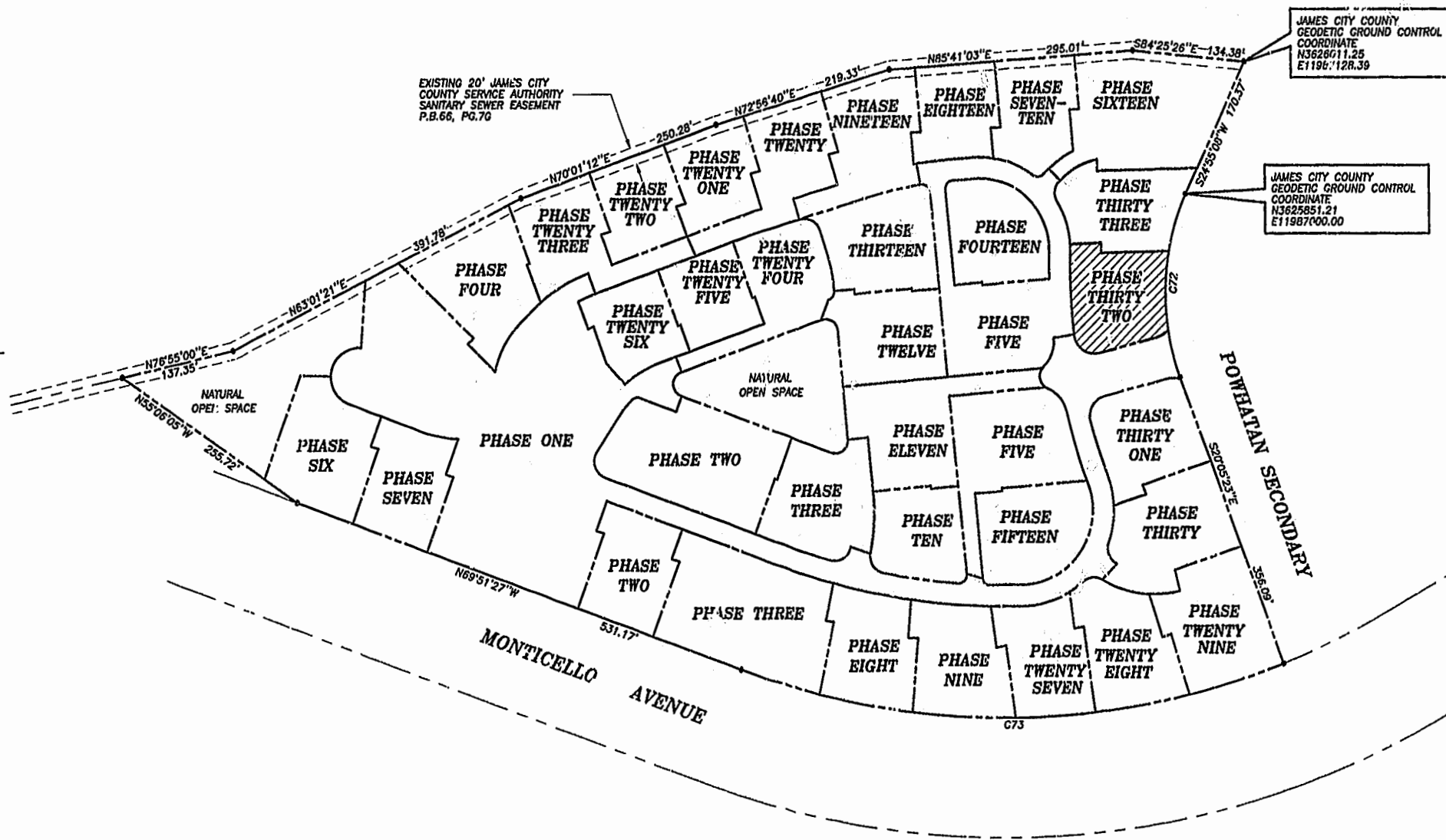
PROJECT NO: 97-008 DRAWN BY: SJB



SLEDD & ASSOCIATES, P.C.
ENGINEERS PLANNERS SURVEYORS
11832 ROCK LANDING DRIVE, SUITE 203
NEWPORT NEWS, VIRGINIA 23606
(757) 873-3386

00'32'24"
JAMES CITY COUNTY
LAND SURVEYOR
PLAT BOOK 66, PAGE 70

NOW OR FORMERLY
POWHATAN ENTERPRISES, INC.



JAMES CITY COUNTY
GEODETIC GROUND CONTROL
COORDINATE
N3628611.25
E11987128.39

JAMES CITY COUNTY
GEODETIC GROUND CONTROL
COORDINATE
N3628851.21
E11987000.00



EXISTING 20' JAMES CITY
COUNTY SERVICE AUTHORITY
SANITARY SEWER EASEMENT
P.B.66, PG.70

NATURAL
OPEN SPACE

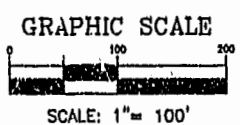
NATURAL
OPEN SPACE

C72

C73

CURVE DATA

NUMBER	DELTA	RADIUS	LENGTH	TANGENT	CHORD	CHORD BEARING
C72	45°00'31"	280.00'	219.95'	116.00'	214.34'	S02°24'52"W
C73	41°26'14"	924.91'	698.91'	349.84'	654.43'	S89°25'26"W



SCALE: 1"= 100'

City of Williamsburg & County of James City
Circuit Court: This PLAT was recorded on
April 23, 2002
at 10:13 (AM) P.M. 85 pg 81-83
DOCUMENT # 020009701
BETSY B. WOOLRIDGE, CLERK
Debra Rowland, Dep. Clerk