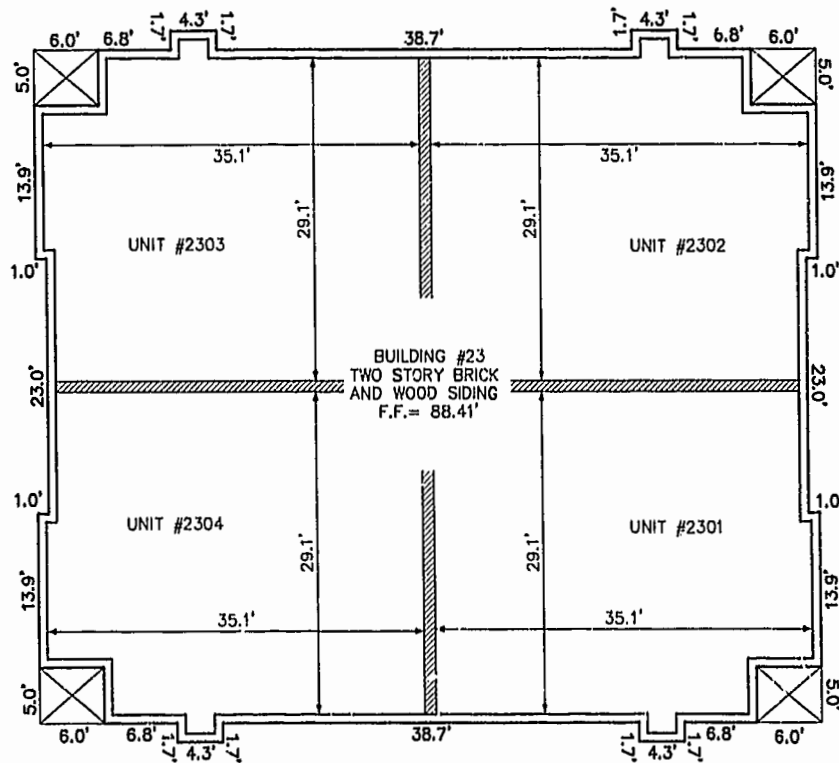
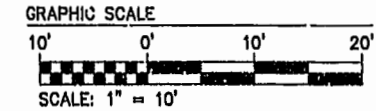
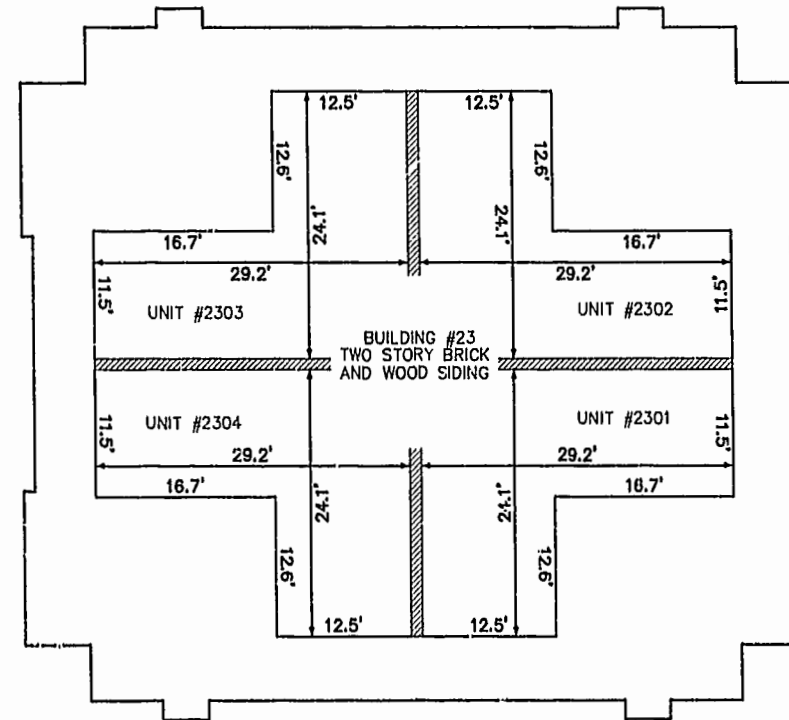


BUILDING NUMBER	UNIT NUMBER	STREET ADDRESS
23	2301	2301 WESTGATE CIRCLE
23	2302	2302 WESTGATE CIRCLE
23	2303	2303 WESTGATE CIRCLE
23	2304	2304 WESTGATE CIRCLE



FRONT OF BUILDING
FIRST FLOOR

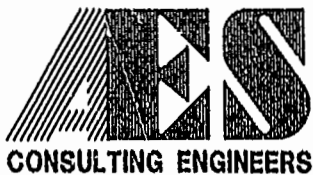


FRONT OF BUILDING
SECOND FLOOR

03.20.02-13:23 JFS 8395p234.dwg

0206601

85 PAGE



5248 Olde Towne Road, Suite 1
Williamsburg, Virginia 23188
(757) 253-0040
Fax (757) 220-8994

**PLAT OF CONDOMINIUM
WESTGATE AT WILLIAMSBURG,
A CONDOMINIUM
PHASE TWENTY-THREE
OWNED BY: 752 L.L.C.,
A VIRGINIA LIMITED LIABILITY COMPANY
CITY OF WILLIAMSBURG VIRGINIA**



No.	DATE	REVISION / COMMENT / NOTE	BY

City of Williamsburg & County of James City
Circuit Court: This PLAT was recorded on
Scale 11 April 2002
at 11:00 AM/PM, PB 25 PG 65-70
DOCUMENT # 020661
BETSY B. WOOLRIDGE, CLERK
Betsy Woolridge Dep. Clerk

Designed GTW/ADS	Drawn JFS
Scale 1" = 10'	Date 3/12/02
Project No. 8395-6	
Drawing No. 4 OF 6	

68