

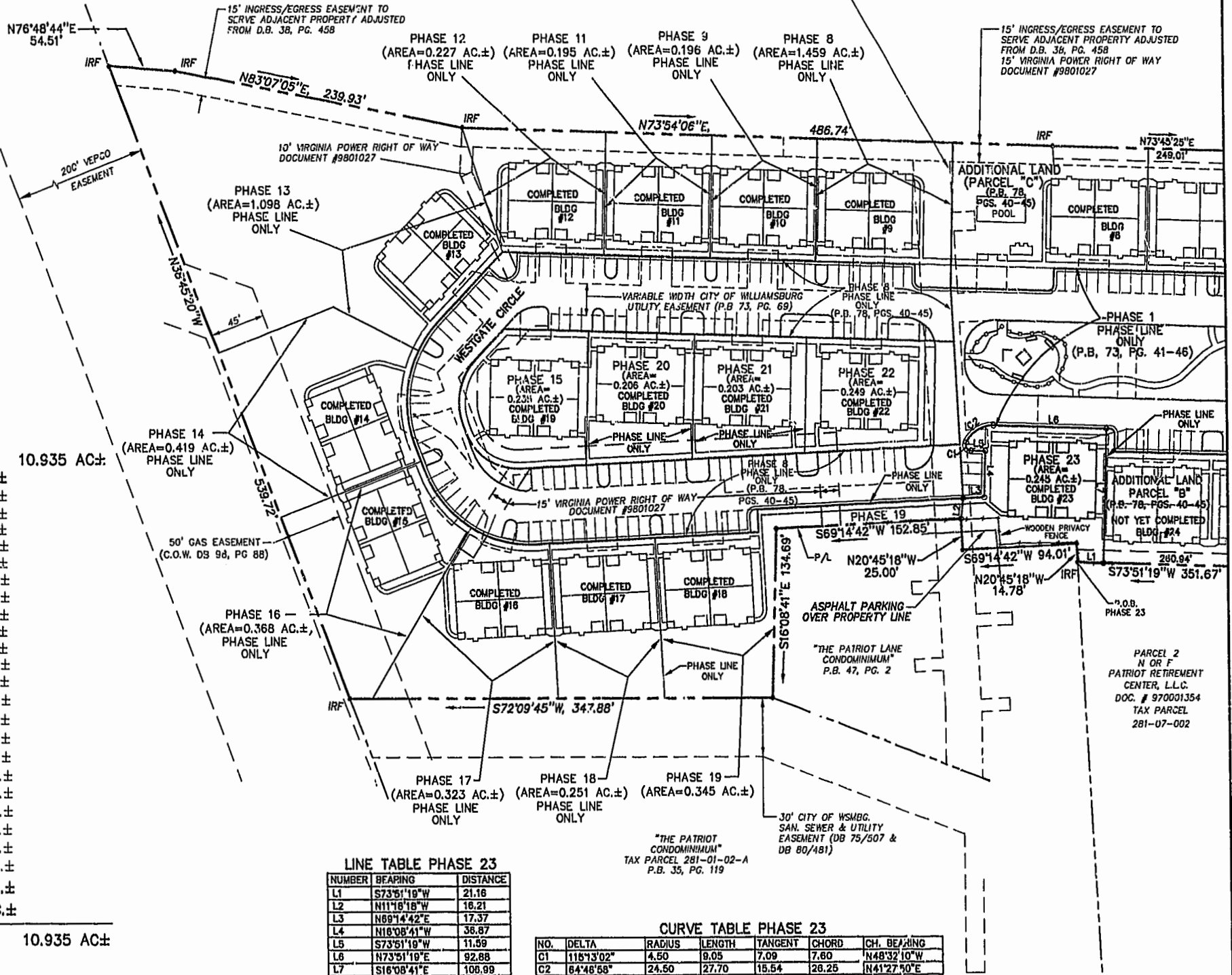
N OR F
WAREURTON & MAHONE ESTATE
TAX PARCEL 282-A-001

VARIABLE WIDTH CITY OF WILLIAMSBURG
SAN, SEWER & UTILITY
EASEMENT (DB 75/507 &
DB 80/481)

15' INGRESS/EGRESS EASEMENT TO
SERVE ADJACENT PROPERTY ADJUSTED
FROM D.B. 38, PG. 458
15' VIRGINIA POWER RIGHT OF WAY
DOCUMENT #9801027

RECORD MERIDIAN
PLAT BOOK 63, PAGE 11

N/F
JAMESTOWN ACADEMY
TAX PARCEL 281-03-A



AREA

TOTAL AREA PARCEL 1= 10.935 AC±

PHASE TWENTY-THREE= 0.245 AC±
 PHASE TWENTY-TWO= 0.249 AC±
 PHASE TWENTY-ONE= 0.203 AC±
 PHASE TWENTY= 0.206 AC±
 PHASE NINETEEN= 0.345 AC±
 PHASE EIGHTEEN= 0.251 AC±
 PHASE SEVENTEEN= 0.323 AC±
 PHASE SIXTEEN= 0.365 AC±
 PHASE FIFTEEN= 0.235 AC±
 PHASE FOURTEEN= 0.419 AC±
 PHASE THIRTEEN= 1.098 AC±
 PHASE TWELVE= 0.227 AC±
 PHASE ELEVEN= 0.195 AC±
 PHASE TEN= 0.222 AC±
 PHASE NINE= 0.196 AC±
 PHASE EIGHT= 1.459 AC±
 PHASE SEVEN= 0.216 AC±
 PHASE SIX= 0.343 AC±
 PHASE FIVE= 0.235 AC±
 PHASE FOUR= 0.200 AC±
 PHASE THREE= 0.196 AC±
 PHASE TWO= 0.195 AC±
 PHASE ONE= 2.377 AC±

ADDITIONAL AREA (PARCEL "B")= 0.536 AC±
 ADDITIONAL AREA (PARCEL "C")= 0.396 AC±

TOTAL= 10.935 AC±

LINE TABLE PHASE 23

NUMBER	BEARING	DISTANCE
L1	S73°51'19"W	21.16
L2	N11°18'18"W	16.21
L3	N69°14'42"E	17.37
L4	N18°08'41"W	36.87
L5	S73°51'19"W	11.59
L6	N73°51'19"E	92.88
L7	S18°08'41"E	108.99

CURVE TABLE PHASE 23

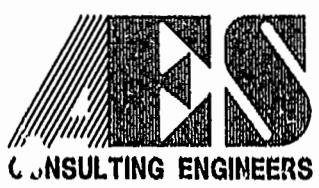
NO.	DELTA	RADIUS	LENGTH	TANGENT	CHORD	CH. BEARING
C1	118°13'02"	4.50	9.05	7.09	7.80	N48°32'10"W
C2	84°48'58"	24.50	27.70	15.54	26.25	N41°27'50"E

8395p233.dwg
03.20.02-13:21
JFS

SEE SHEET 2

#020661

85 PAGE 67



5248 Olde Towne Road, Suite 1
Williamsburg, Virginia 23188
(757) 253-0040
Fax (757) 220-8994

PLAT OF CONDOMINIUM
WESTGATE AT WILLIAMSBURG,
A CONDOMINIUM
PHASE TWENTY-THREE
OWNED BY: 752 L.L.C.,
A VIRGINIA LIMITED LIABILITY COMPANY
CITY OF WILLIAMSBURG VIRGINIA



City of Williamsburg & County of James City
Circuit Court: This PLAT was recorded on
11 April 2002
at 11:00 AM, PB 95, PG 65-72
DOCUMENT # 020661
BETSY B. WOOLRIDGE, CLERK
Betsy B. Woolridge, Dep. Clerk

No.	DATE	REVISION / COMMENT / NOTE	BY
1	3/25/02	REVISED PER ATTORNEY COMMENTS	JFS

Designed	Drawn
GTW/ADS	JFS
Scale	Date
1" = 60'	3/12/02
Project No.	
8395-6	
Drawing No.	
3 OF 6	