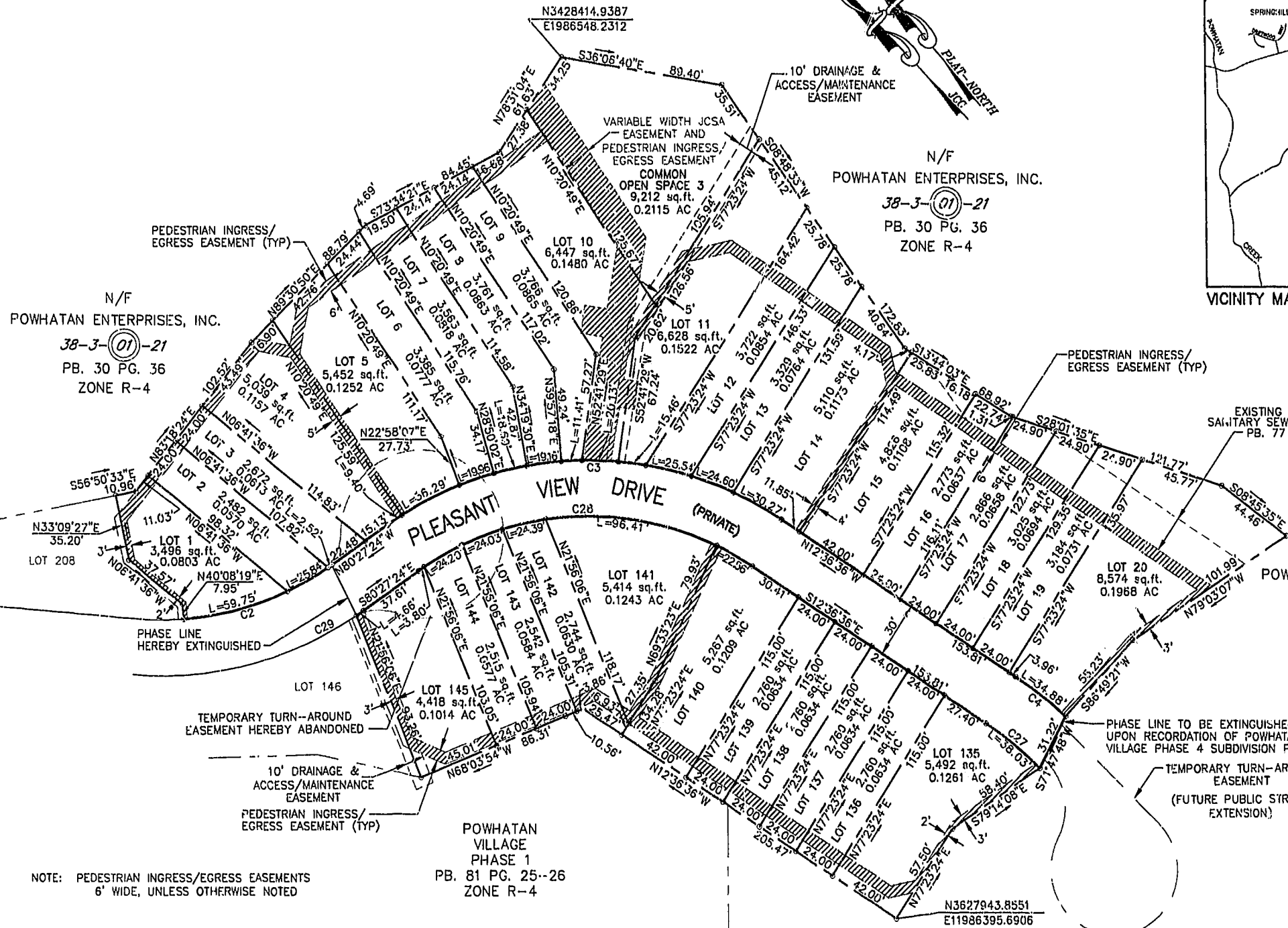


VICINITY MAP SCALE: 1"=2000'

City of Williamsburg & County of James City
 Circuit Court: This PLAT was recorded on
MARCH 14, 2002
 at 1:24 AM PM PB 85 PG 47-48
 DOCUMENT # 020006805
 BETSY B. WOOLRIDGE, CLERK
Betsy Woolridge Clerk



N/F
 POWHATAN ENTERPRISES, INC.
 38-3-(01)-21
 PB. 30 PG. 36
 ZONE R-4

N/F
 POWHATAN ENTERPRISES, INC.
 38-3-(01)-21
 PB. 30 PG. 36
 ZONE R-4

N/F
 POWHATAN ENTERPRISES, INC.
 38-3-(01)-21
 PB. 30 PG. 36
 ZONE R-4
 FUTURE DEVELOPMENT
 POWHATAN VILLAGE
 PHASE 4

SUBDIVISION OF
 POWHATAN VILLAGE
 PHASE 2
 BERKELEY DISTRICT
 JAMES CITY COUNTY, VIRGINIA
 SCALE: 1"=40' DATE: 2/27/02
 SHEET 1 OF 2

LANDMARK
DESIGN GROUP
 Engineers • Planners • Surveyors
 Landscape Architects • Environmental Consultants
 4029 Ironbound Road, Suite 100
 Williamsburg, VA 23188
 Tel. (757) 253-2975 Fax (757) 229-0049
 Email: lmdg@landmarkdgb.com

NOTE: PEDESTRIAN INGRESS/EGRESS EASEMENTS
 6' WIDE, UNLESS OTHERWISE NOTED

POWHATAN
 VILLAGE
 PHASE 1
 PB. 81 PG. 25-26
 ZONE R-4

N/F
 POWHATAN ENTERPRISES, INC.
 38-3-(01)-21
 PB. 30 PG. 36
 ZONE R-4
 FUTURE DEVELOPMENT
 POWHATAN VILLAGE
 PHASE 3

CURVE TABLE						
CURVE	LENGTH	RADIUS	TANGENT	CHORD DIRECTION	CHORD	DELTA
C2	113.67'	165.00'	59.31'	S6°41'12"E	111.62'	39°32'22"
C3	230.51'	195.00'	131.15'	S48°32'00"E	217.65'	67°50'47"
C4	88.40'	215.00'	44.83'	S00°49'52"E	87.78'	23°33'29"
C27	76.07'	185.00'	38.58'	N00°49'52"W	75.53'	23°33'29"
C28	195.38'	185.00'	110.97'	N46°32'00"W	184.17'	67°50'47"
C29	136.57'	195.00'	70.09'	S60°41'12"E	131.91'	39°32'22"

