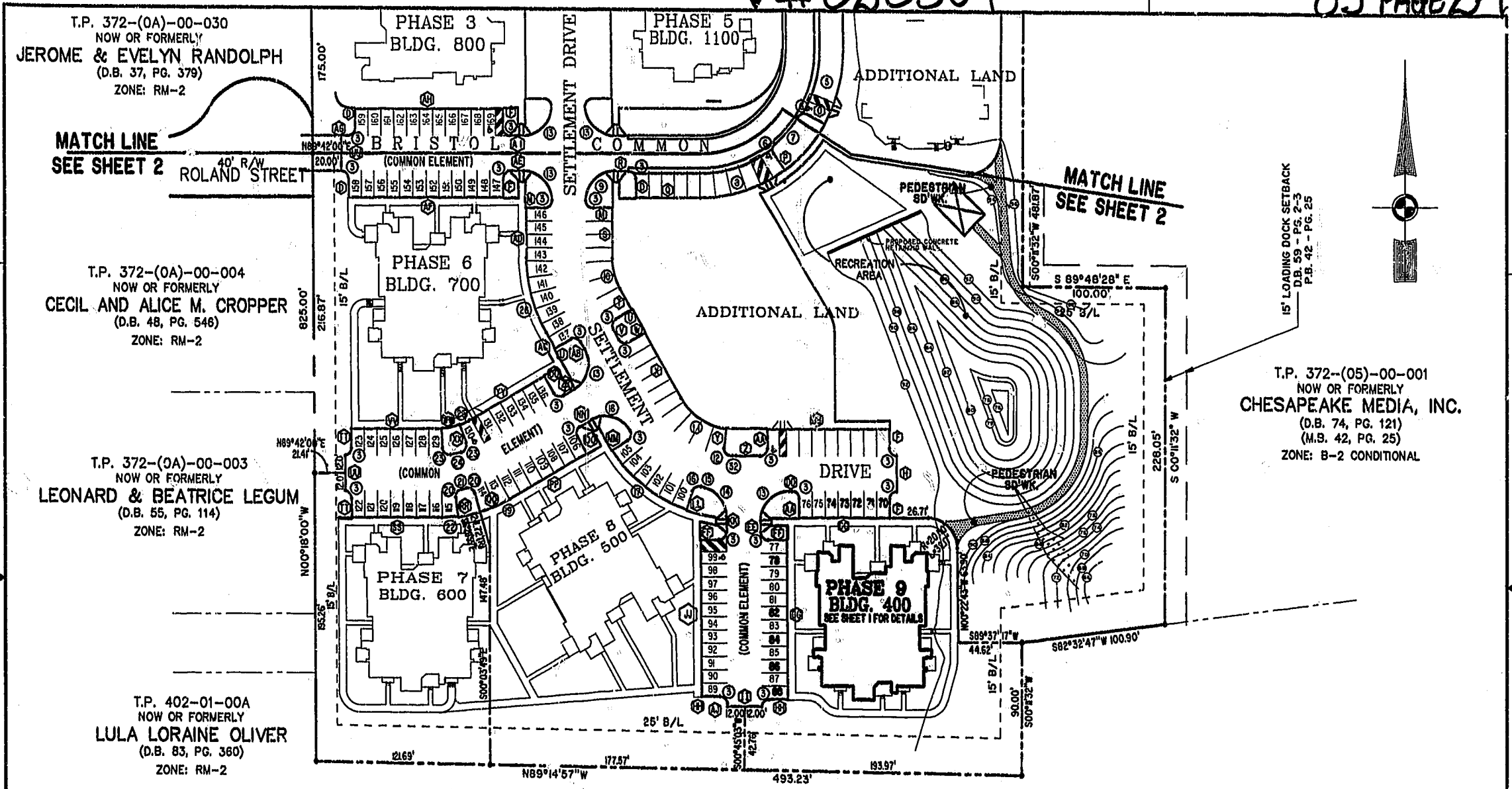


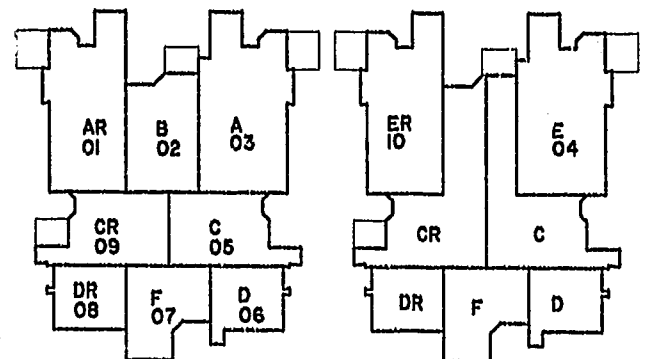
#020309

85 PAGE 27



(FIRST FLOOR)

(SECOND FLOOR)



TYPICAL CONDOMINIUM LAYOUT

City of Williamsburg & County of James City
 Circuit Court: This PLAT was recorded on
 14 February 2003
 at 10:50 AM/PM. PB 85 PG 25-29
 DOCUMENT # 020309
 BETSY B. WOOLRIDGE, CLERK
Betsy Woolridge, Clerk



BRISTOL COMMONS
 A CONDOMINIUM COMMUNITY
 PHASE NINE
 FOR
 KEY GROUP, LLC
 CITY OF WILLIAMSBURG, VIRGINIA

Hassell & Folkes, P.C. Engineers Surveyors Planners Chesapeake, VA 23320 (757) 547-9531	SIZE: C	CONTRACT NO: 98062	DISK/BOX: 123K/15	FILENAME: BRISTOL9.DWG	REV:
SCALE: 1" = 50'	DATE: 08/31/01	SHEET 3 of 4			