

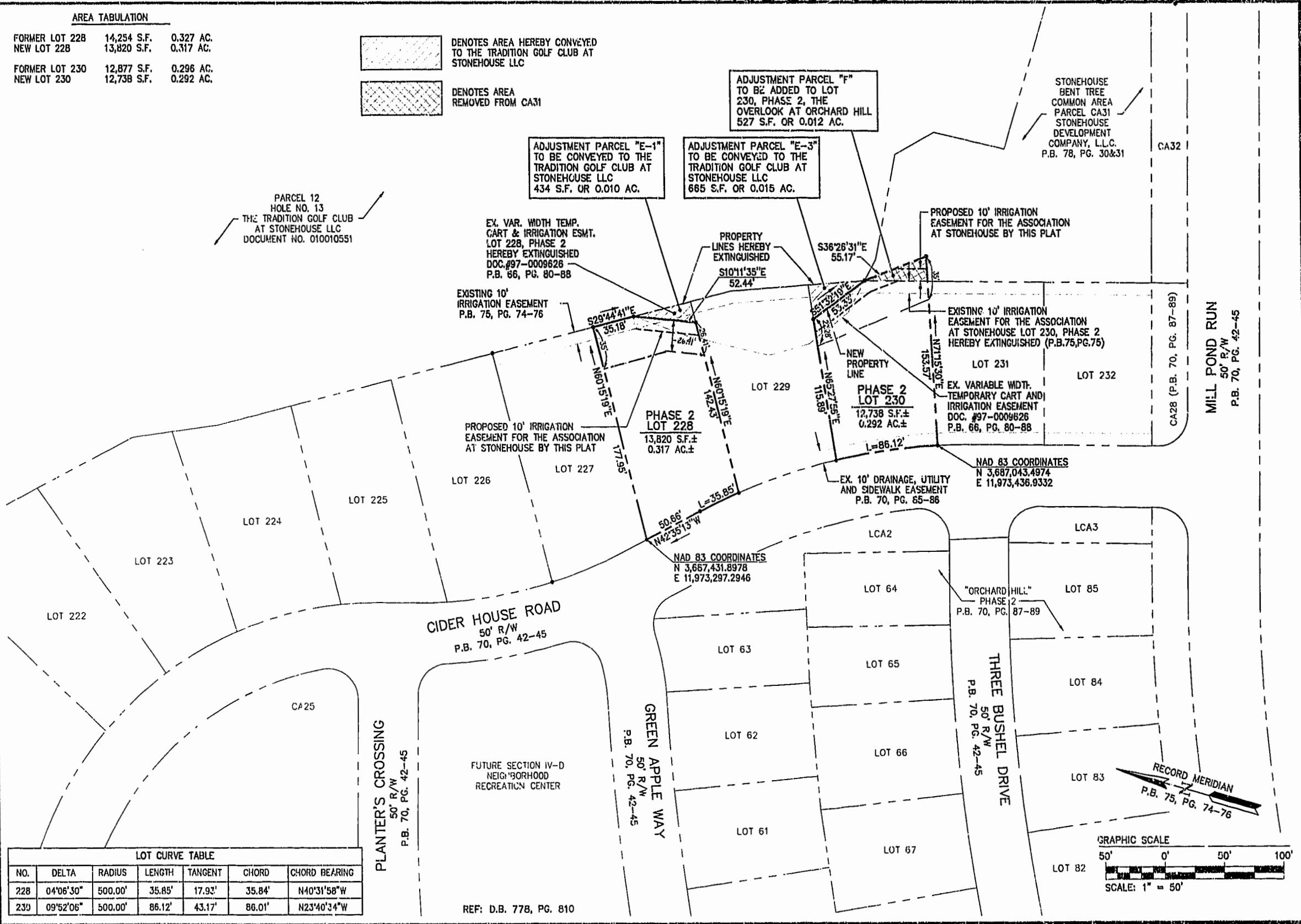


AREA TABULATION

FORMER LOT 228	14,254 S.F.	0.327 AC.
NEW LOT 228	13,820 S.F.	0.317 AC.
FORMER LOT 230	12,877 S.F.	0.296 AC.
NEW LOT 230	12,738 S.F.	0.292 AC.

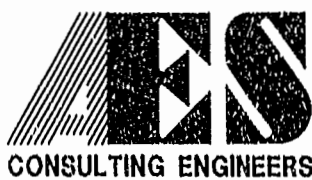
 DENOTES AREA HEREBY CONVEYED TO THE TRADITION GOLF CLUB AT STONEHOUSE LLC

 DENOTES AREA REMOVED FROM CA31



LOT CURVE TABLE

NO.	DELTA	RADIUS	LENGTH	TANGENT	CHORD	CHORD BEARING
228	04°06'30"	500.00'	35.85'	17.93'	35.84'	N40°31'58"W
230	09°52'06"	500.00'	86.12'	43.17'	86.01'	N23°40'34"W



5248 Olde Towne Road, Suite 1  
 Williamsburg, Virginia 23188  
 (757) 253-0040  
 Fax (757) 220-8994

PLAT OF PROPERTY LINE ADJUSTMENT, LOT LINE  
 EXTINGUISHMENT AND SETBACK DELINEATION  
 BEING LOTS 211-214, 222, 228 & 230  
 THE OVERLOOK AT ORCHARD HILL PHASE 2

**STONEHOUSE**

STONEHOUSE DISTRICT JAMES CITY COUNTY VIRGINIA



City of Williamsburg & County of James City Circuit Court: This PLAT was recorded on <i>28 Jan 2002</i> at <i>3:49</i> AM/PM, PG. <i>84</i> PG. <i>28-100</i>	
DOCUMENT # <i>02002584</i> BETSY D. WOOLRIDGE, CLERK <i>Betsy Woolridge</i> Clerk	
1 11/13/01 REVISD DUE TO CHANGE IN OWNERSHIP	VMH
No. DATE REVISION / COMMENT / NOTE	BY

Designed AES	Drawn AWT
Scale 1"=50'	Date 6/19/01
Project No. 8922	
Drawing No. 3 OF 3	