

AMENDED PLAT OF SUBDIVISION  
WATERFORD  
AT  
POWHATAN SECONDARY  
PHASE TWENTY-NINE  
BERKELEY DISTRICT  
JAMES CITY COUNTY, VIRGINIA

DATE: 10/21/98 SHEET 2 OF 3 SCALE: 1"=100'  
PROJECT NO: 97-008 DRAWN BY: SJB



SLEDD & ASSOCIATES, P.C.  
ENGINEERS PLANNERS SURVEYORS  
11832 ROCK LANDING DRIVE, SUITE 203  
NEWPORT NEWS, VIRGINIA 23606  
(757) 873-3388

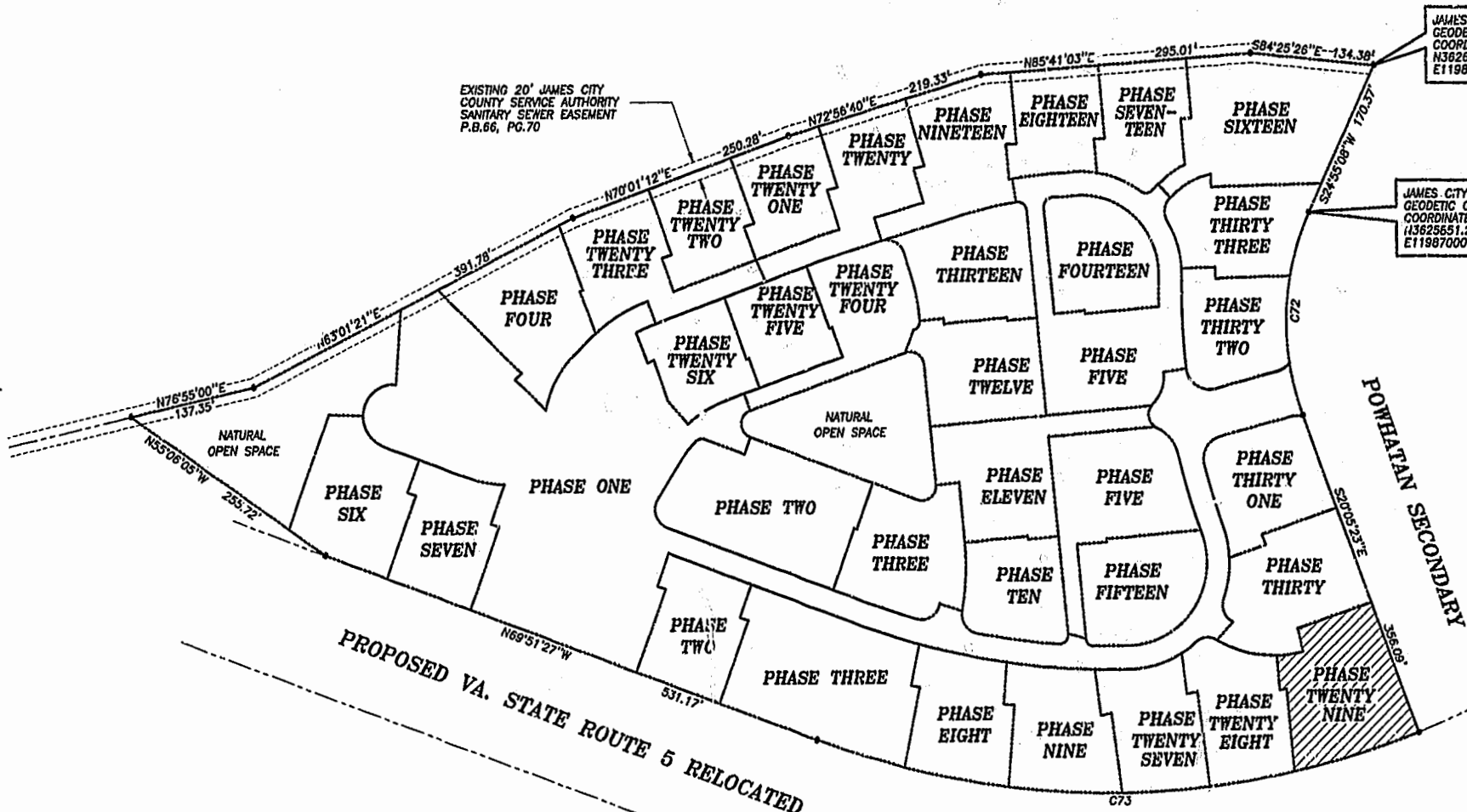
00'32'24"  
JAMES CITY COUNTY  
GEODETIC GROUND CONTROL  
MERIDIAN  
PLAT BOOK 66, PAGE 70

NOW OR FORMERLY  
POWHATAN ENTERPRISES, INC.

EXISTING 20" JAMES CITY  
COUNTY SERVICE AUTHORITY  
SANITARY SEWER EASEMENT  
P.8.66, PG.70

JAMES CITY COUNTY  
GEODETIC GROUND CONTROL  
COORDINATE  
N3028011.25  
E11987128.39

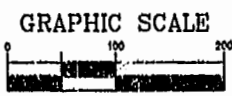
JAMES CITY COUNTY  
GEODETIC GROUND CONTROL  
COORDINATE  
N3625651.21  
E11987000.00



City of Williamsburg & County of James City  
Circuit Court: This PLAT was recorded on  
17 Jan 2002  
at 1:01 P.M. PB 84 PG 91-92  
DOCUMENT # 020001729  
BETSY B. WOOLRIDGE, CLERK  
*Betsy Woolridge* Dep. Clerk

CURVE DATA

NUMBER	DELTA	RADIUS	LENGTH	TANGENT	CHORD	CHORD BEARING
C72	45'00'31"	280.00'	219.95'	116.00'	214.34'	S02'24'52"W
C73	41'26'14"	924.91'	668.91'	349.84'	654.43'	S89'25'26"W



SCALE: 1"= 100'