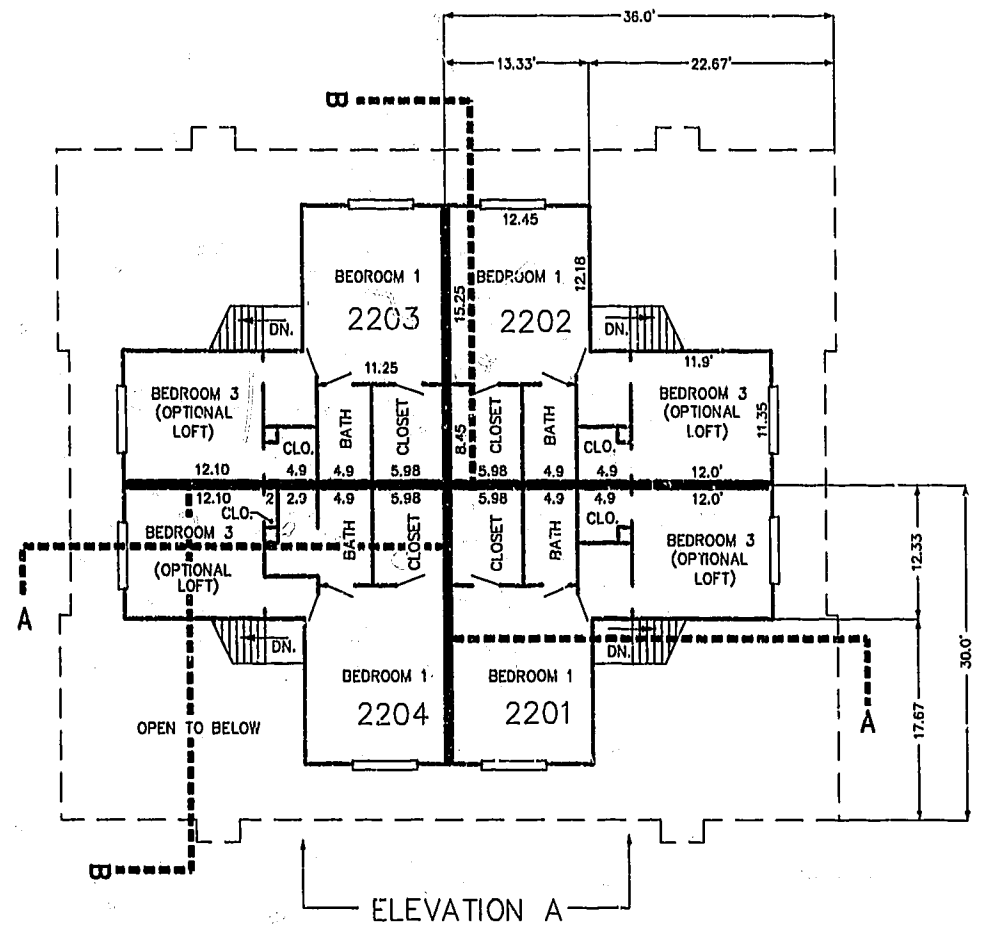


FIRST FLOOR PLAN (UNIT #2202 IS TYPICAL)



SECOND FLOOR PLAN (UNIT #2202 IS TYPICAL)

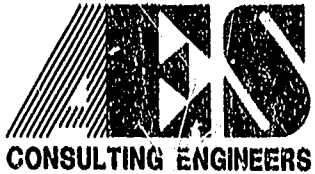


ELEVATION A



ELEVATION B

11.30.01-09:49 8395p225.dwg JFS



5248 Olde Towne Road, Suite 1
 Williamsburg, Virginia 23188
 (757) 253-0040
 Fax (757) 220-8994

PLAT OF CONDOMINIUM
 WESTGATE AT WILLIAMSBURG,
 A CONDOMINIUM
 PHASE TWENTY-TWO
 OWNED BY: 752 L.L.C.,
 A VIRGINIA LIMITED LIABILITY COMPANY
 CITY OF WILLIAMSBURG VIRGINIA



No.	DATE	REVISION / COMMENT / NOTE	BY

City of Williamsburg & County of James City
 Circuit Court: This PLAT was recorded on
 10 Nov 2002
 at 2:14 PM, PB 89, PG 75-80
 DOCUMENT # 020063
 BETSY B. WOOLRIDGE, CLERK
 Betsy B. Woolridge, Clerk

Designed GTW/ADS	Drawn JFS
Scale 1" = 10'	Date 11/26/01
Project No. 8395-6	
Drawing No. 5 OF 6	