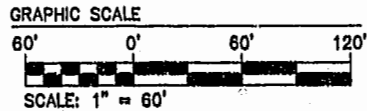


NOTE:  
 AT THE TIME OF THIS SURVEY  
 ROADS AND SIDEWALK ARE UNDER  
 CONSTRUCTION. (PROPOSED  
 LOCATION SHOWN), WATER &  
 & SANITARY SYSTEM ARE IN PLACE.

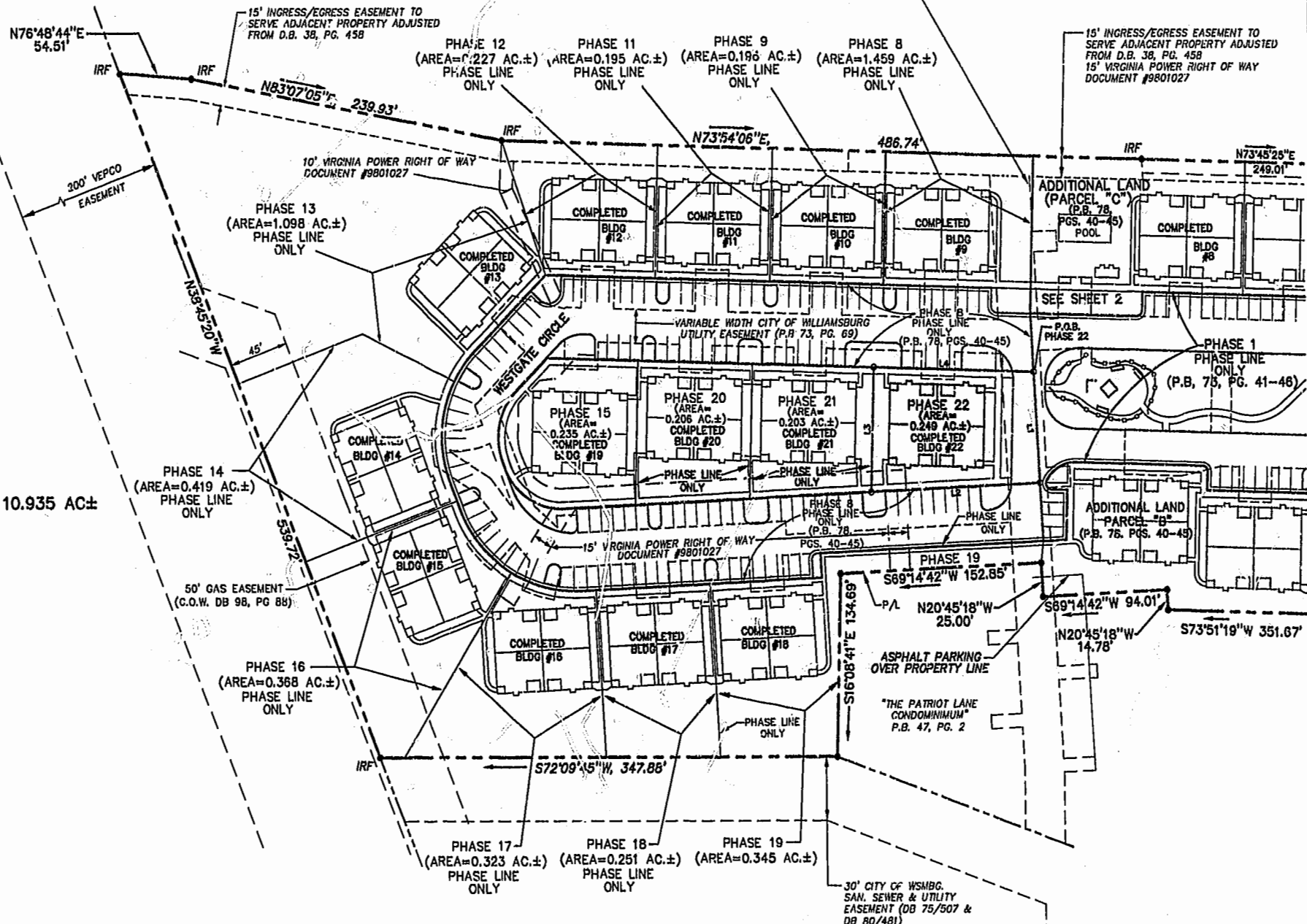


N/F  
 JAMESTOWN ACADEMY  
 TAX PARCEL 281-03-A

N OR F  
 WARBURTON & MAHONE ESTATE  
 TAX PARCEL 282-A-001

VARIABLE WIDTH CITY OF WILLIAMSBURG  
 SAN. SEWER & UTILITY  
 EASEMENT (DB 75/507 &  
 DB 80/481)

15' INGRESS/EGRESS EASEMENT TO  
 SERVE ADJACENT PROPERTY ADJUSTED  
 FROM D.B. 38, PG. 458  
 15' VIRGINIA POWER RIGHT OF WAY  
 DOCUMENT #9801027



**AREA**

TOTAL AREA PARCEL 1= 10.935 AC±

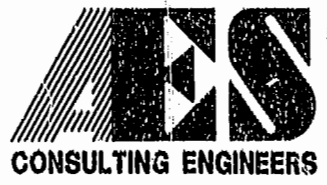
PHASE TWENTY-TWO=	0.249 AC.±
PHASE TWENTY-ONE=	0.203 AC.±
PHASE TWENTY=	0.206 AC.±
PHASE NINETEEN=	0.345 AC.±
PHASE EIGHTEEN=	0.251 AC.±
PHASE SEVENTEEN=	0.323 AC.±
PHASE SIXTEEN=	0.368 AC.±
PHASE FIFTEEN=	0.235 AC.±
PHASE FOURTEEN=	0.419 AC.±
PHASE THIRTEEN=	1.098 AC.±
PHASE TWELVE=	0.227 AC.±
PHASE ELEVEN=	0.195 AC.±
PHASE TEN=	0.222 AC.±
PHASE NINE=	0.196 AC.±
PHASE EIGHT=	1.459 AC.±
PHASE SEVEN=	0.216 AC.±
PHASE SIX=	0.343 AC.±
PHASE FIVE=	0.235 AC.±
PHASE FOUR=	0.200 AC.±
PHASE THREE=	0.196 AC.±
PHASE TWO=	0.195 AC.±
PHASE ONE=	2.377 AC.±
ADDITIONAL AREA (PARCEL "B")=	0.781 AC.±
ADDITIONAL AREA (PARCEL "C")=	0.396 AC.±
<b>TOTAL=</b>	<b>10.935 AC±</b>

**LINE TABLE PHASE 22**

NUMBER	BEARING	DISTANCE
L1	S20°42'31"E	81.86'
L2	S89°14'42"W	128.54'
L3	N18°08'41"W	91.93'
L4	N73°51'19"E	121.61'

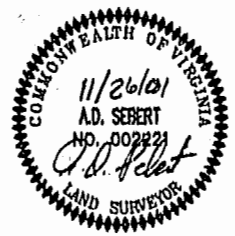
"THE PATRIOT LANE  
 CONDOMINIUM"  
 TAX PARCEL 281-01-02-A  
 P.B. 35, PG. 119

11.30.01-08:11 8395P223.DWG JFS



2548 Olde Towne Road, Suite 1  
 Williamsburg, Virginia 23188  
 (757) 253-0040  
 Fax (757) 220-8994

**PLAT OF CONDOMINIUM  
 WESTGATE AT WILLIAMSBURG,  
 A CONDOMINIUM  
 PHASE TWENTY-TWO  
 OWNED BY: 752 L.L.C.,  
 A VIRGINIA LIMITED LIABILITY COMPANY  
 CITY OF WILLIAMSBURG VIRGINIA**



City of Williamsburg & County of James City Circuit Court: This PLAT was recorded on 10/26/01 at 2:41 PM, P.B. 35, PG. 119-120 DOCUMENT # 020063 BETSY B. WOOLRIDGE, CLERK <i>Betsy Woolridge</i> Dep. Clerk			
No.	DATE	REVISION / COMMENT / NOTE	BY

Designed GTW/ADS	Drawn JFS
Scale 1" = 60'	Date 11/26/01
Project No. 8395-6	
Drawing No. 3 OF 6	