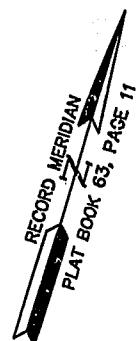
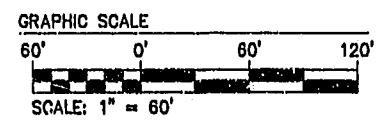


NOTE:  
AT THE TIME OF THIS SURVEY  
ROADS AND SIDEWALK ARE UNDER  
CONSTRUCTION. (PROPOSED  
LOCATION SHOWN). WATER &  
& SANITARY SYSTEM ARE IN PLACE.

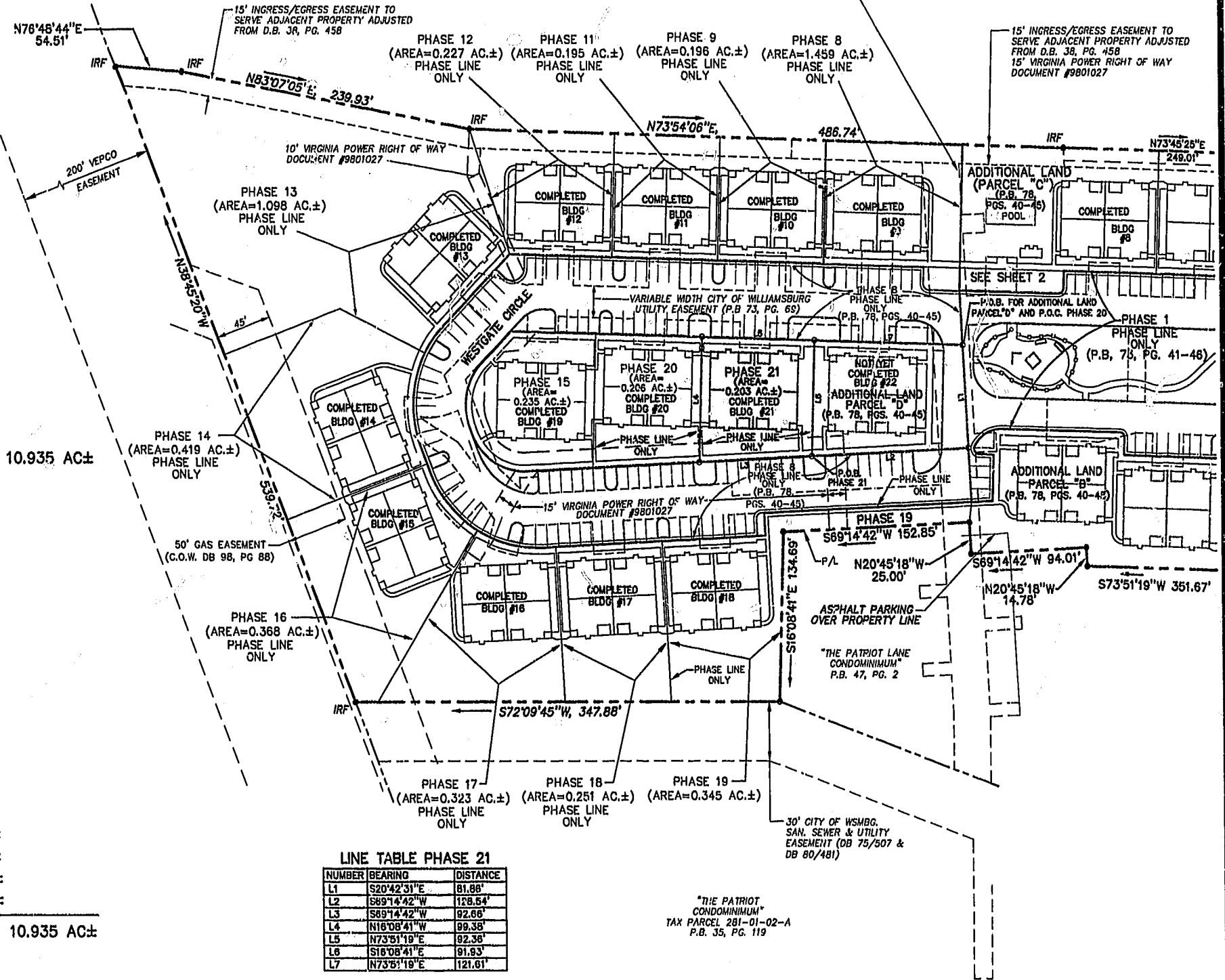


N/F  
JAMESTOWN ACADEMY  
TAX PARCEL 281-03-A

N OR F  
WARBURTON & MAHONE ESTATE  
TAX PARCEL 282-A-001

VARIABLE WIDTH CITY OF WILLIAMSBURG  
SAN. SEWER & UTILITY  
EASEMENT (DB 75/507 &  
DB 80/481)

15' INGRESS/EGRESS EASEMENT TO  
SERVE ADJACENT PROPERTY ADJUSTED  
FROM D.B. 38, PG. 458  
15' VIRGINIA POWER RIGHT OF WAY  
DOCUMENT #9801027



**AREA**

TOTAL AREA PARCEL 1= 10.935 AC±

PHASE TWENTY-ONE=	0.203 AC±
PHASE TWENTY=	0.206 AC±
PHASE NINETEEN=	0.345 AC±
PHASE EIGHTEEN=	0.251 AC±
PHASE SEVENTEEN=	0.323 AC±
PHASE SIXTEEN=	0.368 AC±
PHASE FIFTEEN=	0.235 AC±
PHASE FOURTEEN=	0.419 AC±
PHASE THIRTEEN=	1.098 AC±
PHASE TWELVE=	0.227 AC±
PHASE ELEVEN=	0.195 AC±
PHASE TEN=	0.222 AC±
PHASE NINE=	0.196 AC±
PHASE EIGHT=	1.459 AC±
PHASE SEVEN=	0.216 AC±
PHASE SIX=	0.343 AC±
PHASE FIVE=	0.235 AC±
PHASE FOUR=	0.200 AC±
PHASE THREE=	0.196 AC±
PHASE TWO=	0.195 AC±
PHASE ONE=	2.377 AC±

ADDITIONAL AREA (PARCEL "B")= 0.781 AC±  
ADDITIONAL AREA (PARCEL "C")= 0.396 AC±  
ADDITIONAL AREA (PARCEL "D")= 0.249 AC±

---

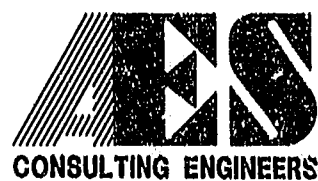
TOTAL= 10.935 AC±

LINE TABLE PHASE 21

NUMBER	BEARING	DISTANCE
L1	S20°42'31"E	81.88'
L2	S89°14'42"W	128.54'
L3	S89°14'42"W	92.66'
L4	N18°08'41"W	99.38'
L5	N73°51'19"E	92.38'
L6	S16°08'41"E	91.93'
L7	N73°51'19"E	121.81'

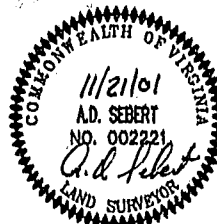
"THE PATRIOT LANE  
CONDOMINIUM"  
TAX PARCEL 281-01-02-A  
P.B. 35, PG. 119

11.08.01-15:19 8395213.DWG JFS



5248 Olde Towne Road, Suite 1  
Williamsburg, Virginia 23188  
(757) 253-0040  
Fax (757) 220-8994

**PLAT OF CONDOMINIUM  
WESTGATE AT WILLIAMSBURG,  
A CONDOMINIUM  
PHASE TWENTY-ONE  
OWNED BY: 752 L.L.C.,  
A VIRGINIA LIMITED LIABILITY COMPANY  
CITY OF WILLIAMSBURG VIRGINIA**



No.	DATE	REVISION / COMMENT / NOTE	BY

City of Williamsburg & County of James City  
Circuit Court: This PLAT was recorded on  
10 Jan 2002  
at 2:28 PM/PH. PB 82 PG 69-74  
DOCUMENT # 020062  
BETSY B. WOOLKIDGE, CLERK  
Betsy B. Woolkidge, Dep. Clerk

Designed GTW/ADS	Drawn JFS
Scale 1" = 60'	Date 11/21/01
Project No. 8395-6	
Drawing No. 3 OF 6	