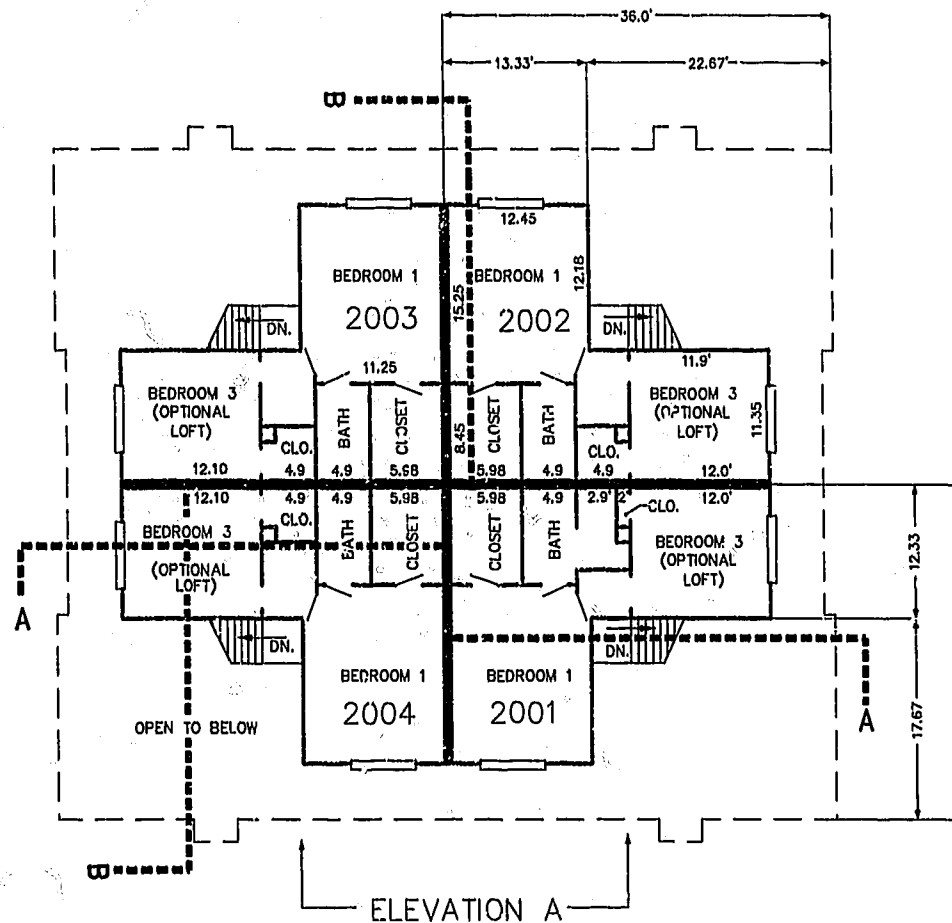


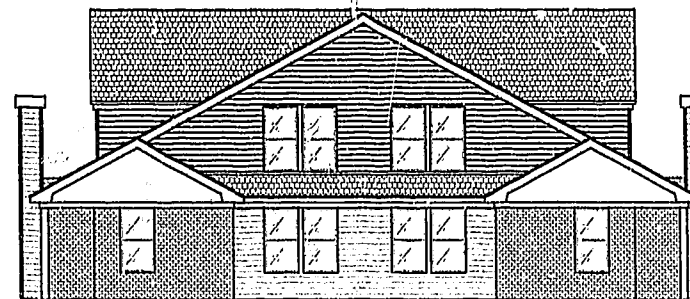
FIRST FLOOR PLAN (UNIT #2002 IS TYPICAL)



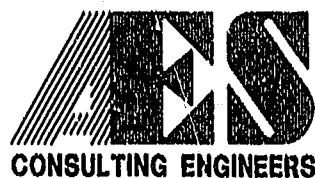
SECOND FLOOR PLAN (UNIT #2002 IS TYPICAL)



ELEVATION A



ELEVATION B



5248 Olde Towne Road, Suite 1
 Williamsburg, Virginia 23188
 (757) 253-0040
 Fax (757) 220-8994

PLAT OF CONDOMINIUM
 WESTGATE AT WILLIAMSBURG,
 A CONDOMINIUM
 PHASE TWENTY
 OWNED BY: 752 L.L.C.,
 A VIRGINIA LIMITED LIABILITY COMPANY
 CITY OF WILLIAMSBURG VIRGINIA



No.	DATE	REVISION / COMMENT / NOTE	BY

City of Williamsburg & County of James City
 Circuit Court: This Plat was recorded on
 at 2:10 PM on 10/24/01 PG. 63-68
 DOCUMENT # 220061
 BETSY B. WOOLRIDGE, CLERK
Betsy B. Woolridge Dep. Clerk

Designed GTW/ADS	Drawn JFS
Scale 1" = 10'	Date 11/12/01
Project No. 8395-6	
Drawing No. 5 OF 6	

8395-6-05-488
11/12/01-10:57