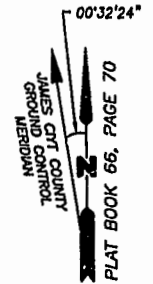


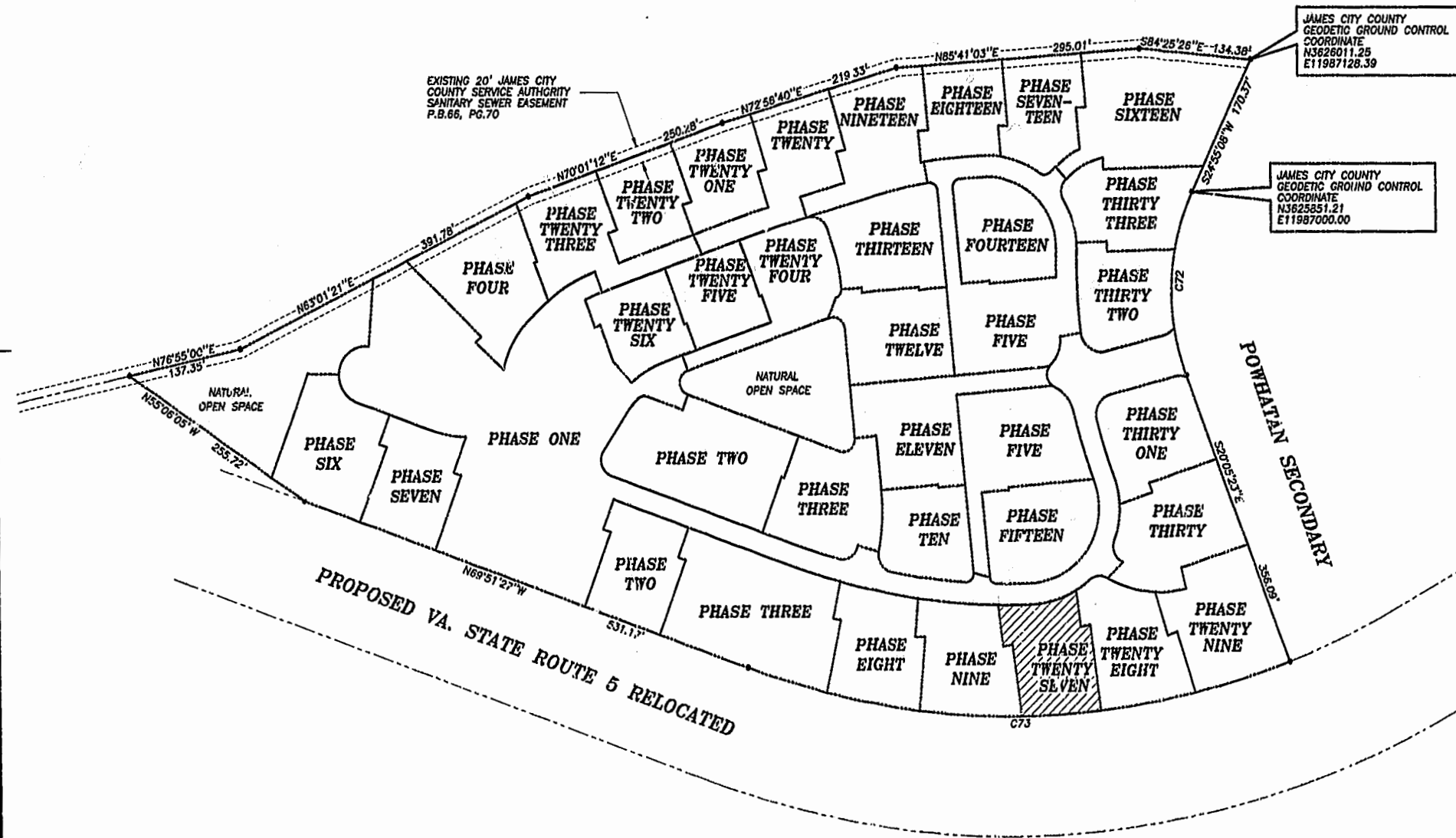
AMENDED PLAT OF SUBDIVISION
WATERFORD
 AT
POWHATAN SECONDARY
 PHASE TWENTY-SEVEN
 BERKELEY DISTRICT
 JAMES CITY COUNTY, VIRGINIA

DATE: 10/21/98 SHEET 2 OF 3 SCALE: 1"=100'
 PROJECT NO: 97-008 DRAWN BY: SJB

SLEDD & ASSOCIATES, P.C.
 ENGINEERS PLANNERS SURVEYORS
 11832 ROCK LANDING DRIVE, SUITE 203
 NEWPORT NEWS, VIRGINIA 23608
 (757) 873-3386

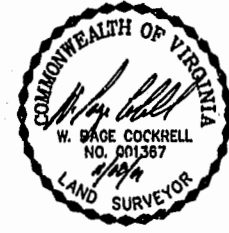


NOW OR FORMERLY
 POWHATAN ENTERPRISES, INC.



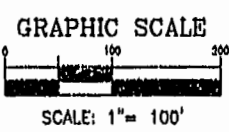
JAMES CITY COUNTY
 GEODETIC GROUND CONTROL
 COORDINATE
 N3626011.25
 E11987128.39

JAMES CITY COUNTY
 GEODETIC GROUND CONTROL
 COORDINATE
 N3625851.21
 E11987000.00



PROPOSED VA. STATE ROUTE 5 RELOCATED

POWHATAN SECONDARY



CURVE DATA

NUMBER	DELTA	RADIUS	LENGTH	TANGENT	CHORD	CHORD BEARING
C72	45°00'31"	280.00'	219.95'	116.00'	214.34'	S02°24'52"W
C73	41°26'14"	924.91'	668.91'	349.84'	654.43'	S89°26'26"W

City of Williamsburg & County of James City
 Circuit Court. This PLAT was recorded on
 28 Nov 2001
 at 10:24 AM/PM, PB 84 PG 49-51
 DOCUMENT # 010024230
 BETSY B. WOOLRIDGE, CLERK
 Betsy Woolridge, Clerk