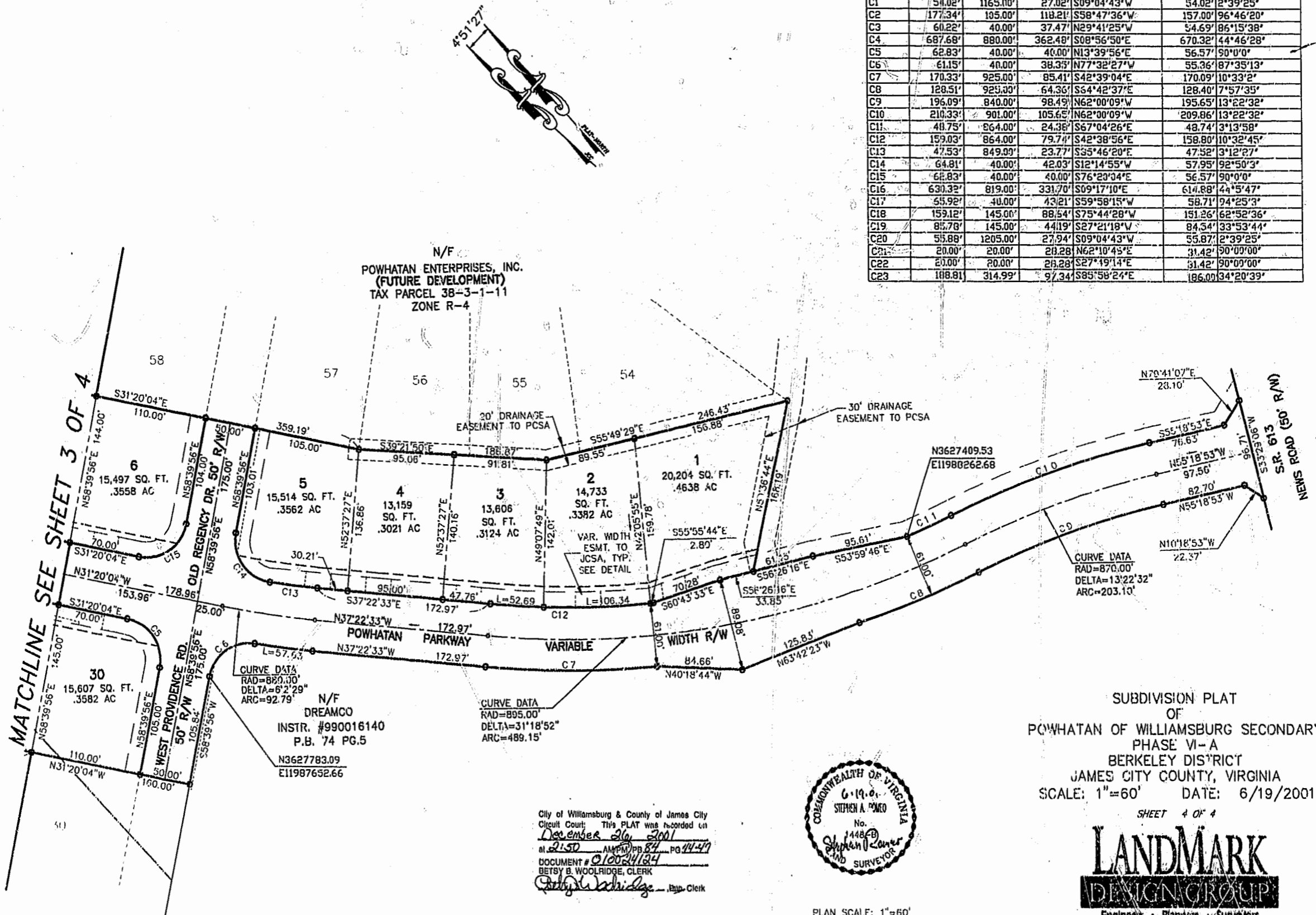
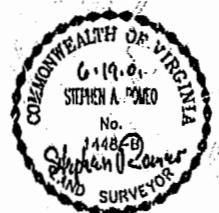


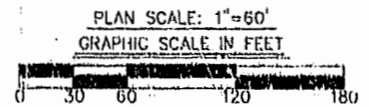
| CURVE TABLE | | | | | | |
|-------------|---------|----------|---------|---------------|---------|-----------|
| CURVE | LENGTH | RADIUS | TANGENT | CHORD BEARING | CHORD | DELTA |
| C1 | 54.02' | 1165.00' | 27.02' | S09°04'43"W | 54.02' | 2°39'25" |
| C2 | 177.34' | 185.00' | 118.21' | S58°47'36"W | 157.00' | 96°46'20" |
| C3 | 60.22' | 40.00' | 37.47' | N29°41'25"W | 54.69' | 86°15'38" |
| C4 | 687.68' | 880.00' | 362.48' | S08°56'50"E | 670.32' | 44°46'28" |
| C5 | 62.83' | 40.00' | 40.00' | N13°39'56"E | 56.57' | 90°0'0" |
| C6 | 61.15' | 40.00' | 38.33' | N77°32'27"W | 55.36' | 87°35'13" |
| C7 | 170.33' | 925.00' | 85.41' | S42°39'04"E | 170.09' | 10°33'2" |
| C8 | 128.51' | 925.00' | 64.36' | S64°42'37"E | 128.40' | 7°57'35" |
| C9 | 196.09' | 840.00' | 98.49' | N62°00'09"W | 195.65' | 13°22'32" |
| C10 | 210.33' | 901.00' | 105.65' | N62°00'09"W | 209.86' | 13°22'32" |
| C11 | 40.75' | 864.00' | 24.38' | S67°04'26"E | 48.74' | 3°13'58" |
| C12 | 159.03' | 864.00' | 79.74' | S42°38'56"E | 158.80' | 10°32'45" |
| C13 | 47.53' | 849.09' | 23.77' | S55°46'20"E | 47.52' | 3°12'27" |
| C14 | 64.81' | 40.00' | 42.03' | S12°14'55"W | 57.95' | 92°50'3" |
| C15 | 62.83' | 40.00' | 40.00' | S76°23'34"E | 56.57' | 90°0'0" |
| C16 | 630.32' | 819.00' | 331.70' | S09°17'10"E | 614.88' | 44°5'47" |
| C17 | 55.92' | 40.00' | 43.21' | S59°58'15"W | 58.71' | 74°25'3" |
| C18 | 159.12' | 145.00' | 88.54' | S75°44'28"W | 151.26' | 62°52'36" |
| C19 | 85.78' | 145.00' | 44.19' | S27°21'18"W | 84.54' | 33°53'44" |
| C20 | 55.88' | 1205.00' | 27.94' | S09°04'43"W | 55.87' | 2°39'25" |
| C21 | 20.00' | 20.00' | 20.28' | N62°10'45"E | 31.42' | 90°00'00" |
| C22 | 20.00' | 20.00' | 20.28' | S27°19'14"E | 31.42' | 90°00'00" |
| C23 | 108.81' | 314.99' | 97.34' | S85°58'24"E | 106.00' | 34°20'39" |



SUBDIVISION PLAT
OF
POWHATAN OF WILLIAMSBURG SECONDARY
PHASE VI-A
BERKELEY DISTRICT
JAMES CITY COUNTY, VIRGINIA
SCALE: 1"=60' DATE: 6/19/2001



City of Williamsburg & County of James City
Circuit Court: This PLAT was recorded on
December 26, 2001
at 2:50 AM PM, PG 84 PG 47
DOCUMENT # 010024124
BETSY B. WOOLRIDGE, CLERK
Betsy Woolridge, Dep. Clerk



SHEET 4 OF 4
LANDMARK
DESIGN GROUP
Engineers • Planners • Surveyors
Landscape Architects • Environmental Consultants

4029 IRONBOUND ROAD, SUITE 100
WILLIAMSBURG, VA 23188
TEL (757) 253-2976 FAX (757) 228-0048

DRAWN BY: LFV PROJ. NO.: 1780041-001.40
CHKD. BY: SAR DWG. NO.: 12015W