

#010024124

84 PAGE 45

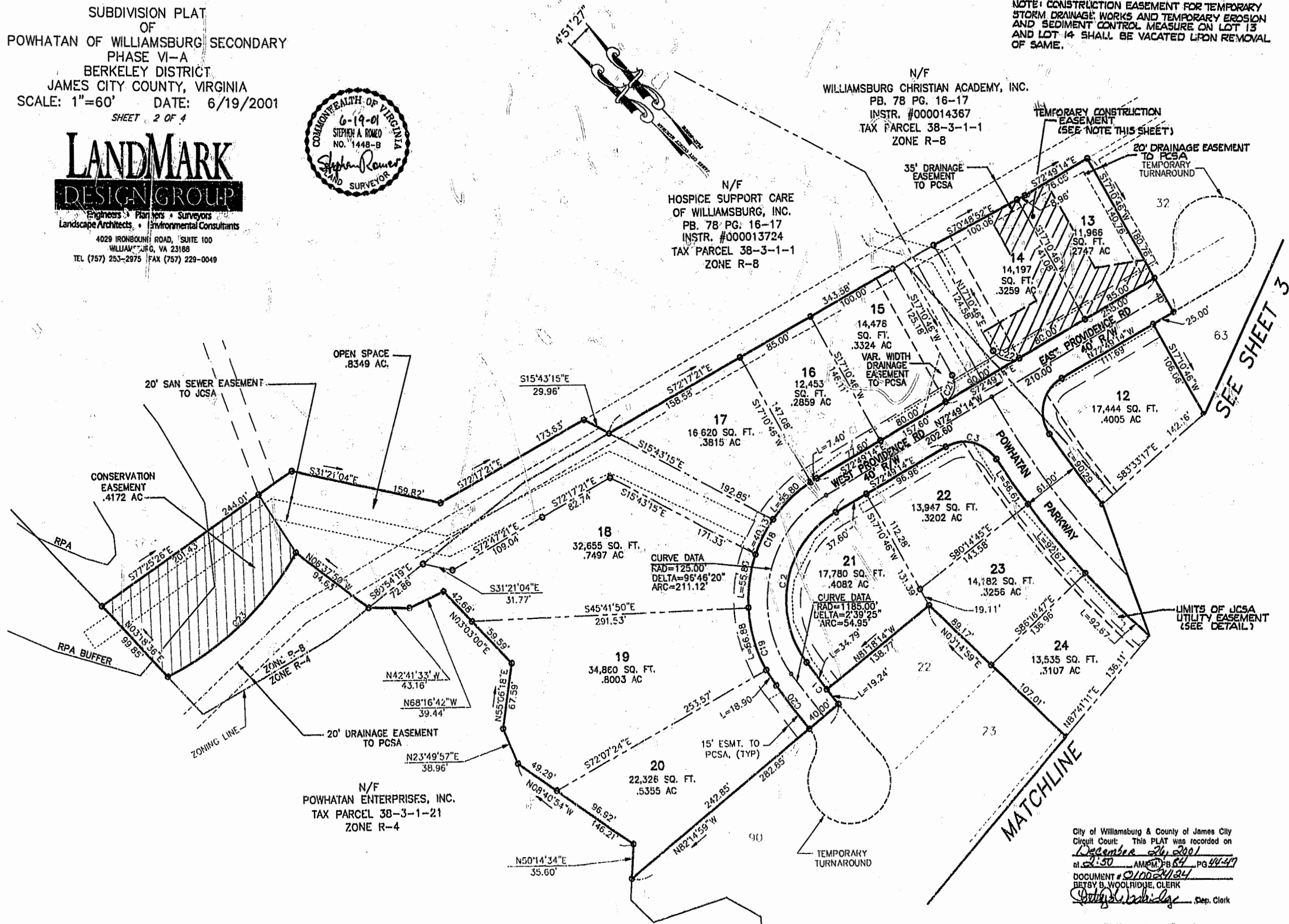
SUBDIVISION PLAT
OF
POWHATAN OF WILLIAMSBURG SECONDARY
PHASE VI-A
BERKELEY DISTRICT
JAMES CITY COUNTY, VIRGINIA
SCALE: 1"=60' DATE: 6/19/2001
SHEET 2 OF 4



LANDMARK
DESIGN GROUP

Engineers • Planners • Surveyors
Landscape Architects • Environmental Consultants
4029 IRONBOUND ROAD, SUITE 100
WILLIAMSBURG, VA 23188
TEL (757) 253-2975 FAX (757) 229-0049

NOTE: CONSTRUCTION EASEMENT FOR TEMPORARY
STORM DRAINAGE WORKS AND TEMPORARY EROSION
AND SEDIMENT CONTROL MEASURE ON LOT 13
AND LOT 14 SHALL BE VACATED UPON REMOVAL
OF SAME.

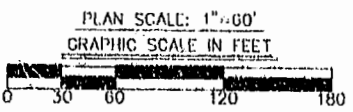


SEE SHEET 3

MATCHLINE

THE COORDINATES SHOWN ON THIS PLAT ARE TIED TO NAD 83;
REFERENCE JCC STATION 322 AND 321RM3AZ.

City of Williamsburg & County of James City
Circuit Court: This PLAT was recorded on
December 26, 2001
at 2:50 AM PM, PG 44-47
DOCUMENT # 010024124
BETSY B. WOOLRIDGE, CLERK
Betsy Woolridge Dep. Clerk



DRAWN BY: LFV
CHKD. BY: AJR
PROJ. NO.: 1780041-001.10
DWG. NO.: 12011W