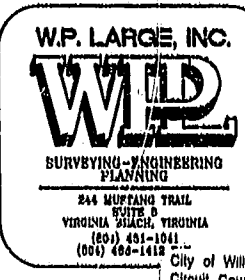
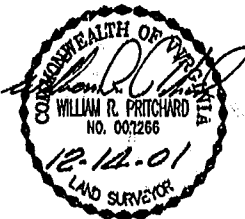
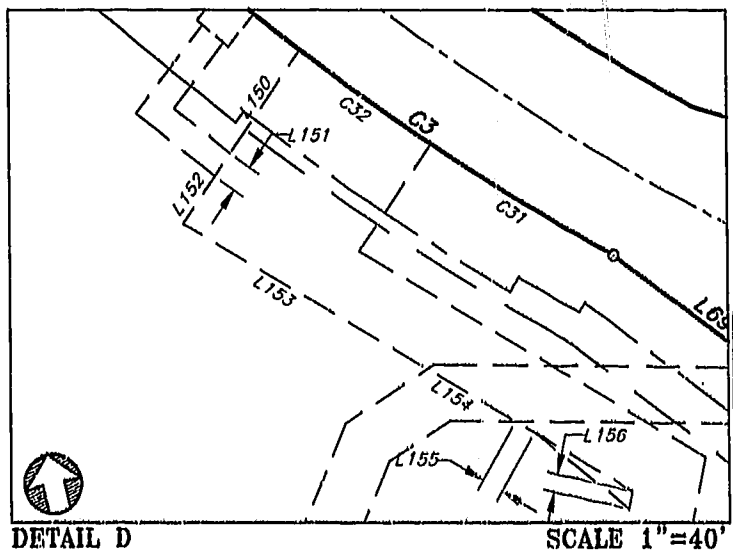
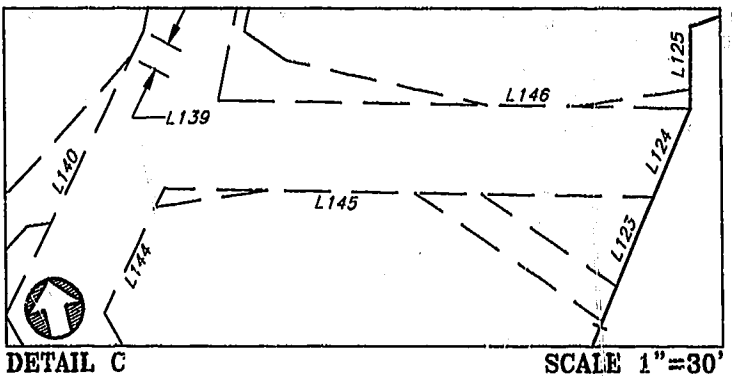
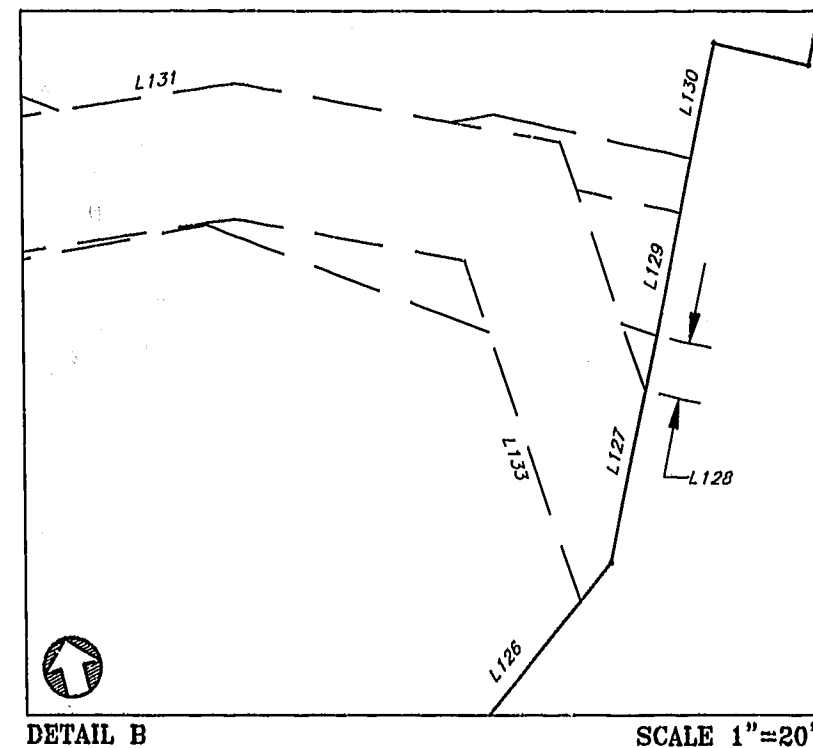
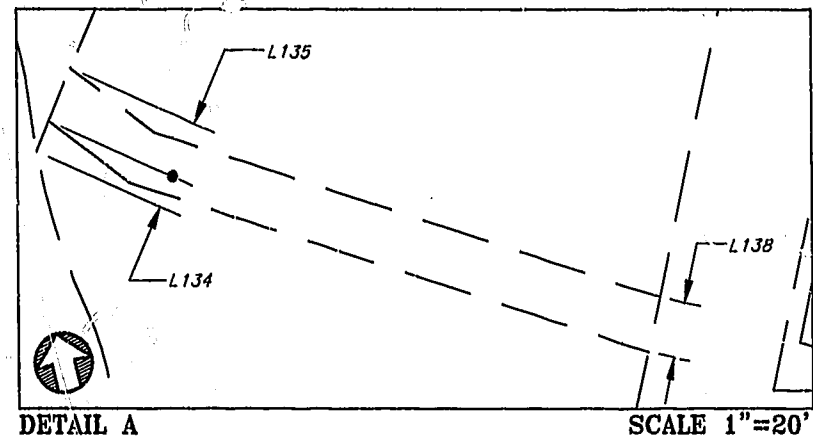


LINE TABLE table with columns NUMBER, DIRECTION, DISTANCE. Rows L1 to L79.

LINE TABLE (CONT.) table with columns NUMBER, DIRECTION, DISTANCE. Rows L79 to L156.

CURVE TABLE table with columns NUMBER, RADIUS, DELTA, LENGTH, TANGENT, CHORD BEARING, CHORD. Rows C1 to C32.



SEE SHEET 1 OF 6 FOR NOTES AND CERTIFICATIONS

SHEET 6 OF 6 SUBDIVISION OF MONTICELLO AT POWHATAN APARTMENTS PARCEL A AREA DESIGNATION D 21.7638 ACRES TOTAL AS SHOWN ON SUBDIVISION PLAT APARTMENT PARCEL NORTH SIDE OF NEWS ROAD POWHATAN OF WILLIAMSBURG SECONDARY BERKELEY DISTRICT - JAMES CITY COUNTY, VA. PLAT RECORDED IN M.B. 74, PG. 6, IN THE CLERK'S OFFICE OF THE CIRCUIT COURT, OF JAMES CITY COUNTY, VIRGINIA

DATE: DECEMBER 13, 2001 City of Williamsburg & County of James City Circuit Court: This PLAT was recorded on December 31, 2001 at 2:15 PM