

SEE SHEET 6 OF 6 FOR LINE TABLE AND CURVE TABLE

W.P. LARGE, INC.
WPL
 SURVEYING-ENGINEERING PLANNING
 244 MUSTANG TRAIL
 SUITE B
 VIRGINIA BEACH, VIRGINIA
 (804) 431-1041
 (804) 465-1418 FAX

- MONUMENT LEGEND**
- DENOTES MONUMENT SET PER JAMES CITY COUNTY SUBDIVISION ORDINANCE SECTION 19-34 TO 19-36
 - DENOTES OLD PIN FOUND (UNLESS NOTED OTHERWISE)

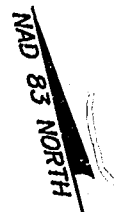


N/F
 POWHATAN ENTERPRISES, INC.
 D.B. 181, PG. 361
 TAX PARCEL
 38-3-01-11

N/F
 MOPON LLC
 20' DRAINAGE EASEMENT
 (INSTRUMENT NO. 990016141)
 8006 S.F.
 0.1838 AC.

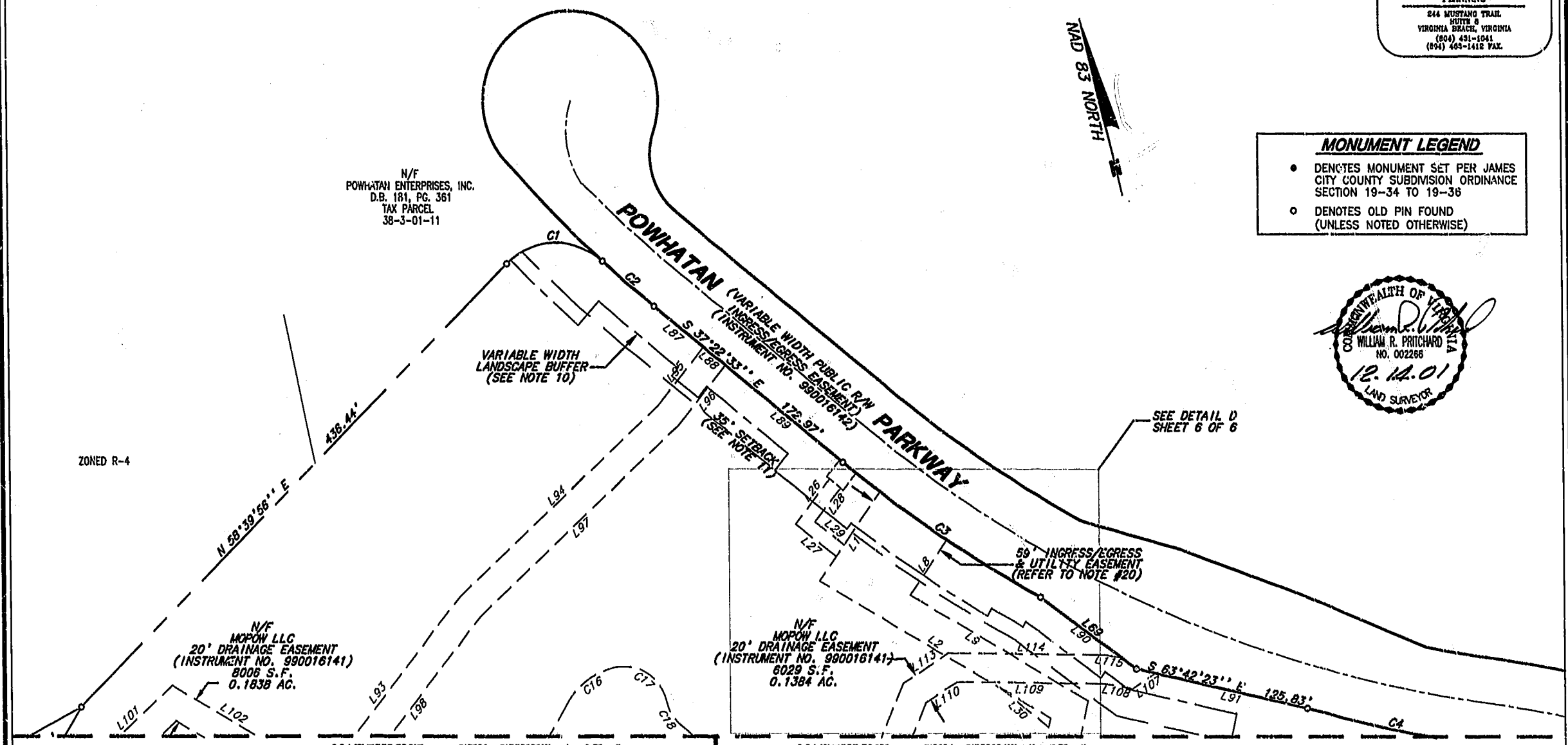
N/F
 MOPON LLC
 20' DRAINAGE EASEMENT
 (INSTRUMENT NO. 990016141)
 8029 S.F.
 0.1384 AC.

VARIABLE WIDTH
 LANDSCAPE BUFFER
 (SEE NOTE 10)



SEE DETAIL D
 SHEET 6 OF 6

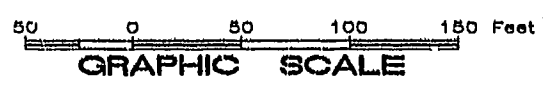
ZONED R-4



SHEET 5 OF 6
 SUBDIVISION
 OF
 MONTICELLO AT POWHATAN APARTMENTS
 PARCEL A
 AREA DESIGNATION D
 21.7638 ACRES TOTAL

AS SHOWN ON
 SUBDIVISION PLAT
 APARTMENT PARCEL NORTH SIDE OF NEWS ROAD
 POWHATAN OF WILLIAMSBURG SECONDARY
 BERKELEY DISTRICT - JAMES CITY COUNTY, VA.
 PLAT RECORDED IN M.B. 74, PG. 6, IN THE CLERK'S OFFICE OF
 THE CIRCUIT COURT, OF JAMES CITY COUNTY, VIRGINIA

SCALE 1"=50' DATE: DECEMBER 13, 2001



City of Williamsburg & County of James City
 Circuit Court: This PLAT was recorded on
 December 31, 2001
 at 2:15 AM PM, PG. 2 of 6
 DOCUMENT # 010024015
 BETSY B. WOOLRIDGE, CLERK
 Betsy B. Woolridge, Clerk

SEE SHEET 1 OF 6 FOR NOTES AND CERTIFICATIONS