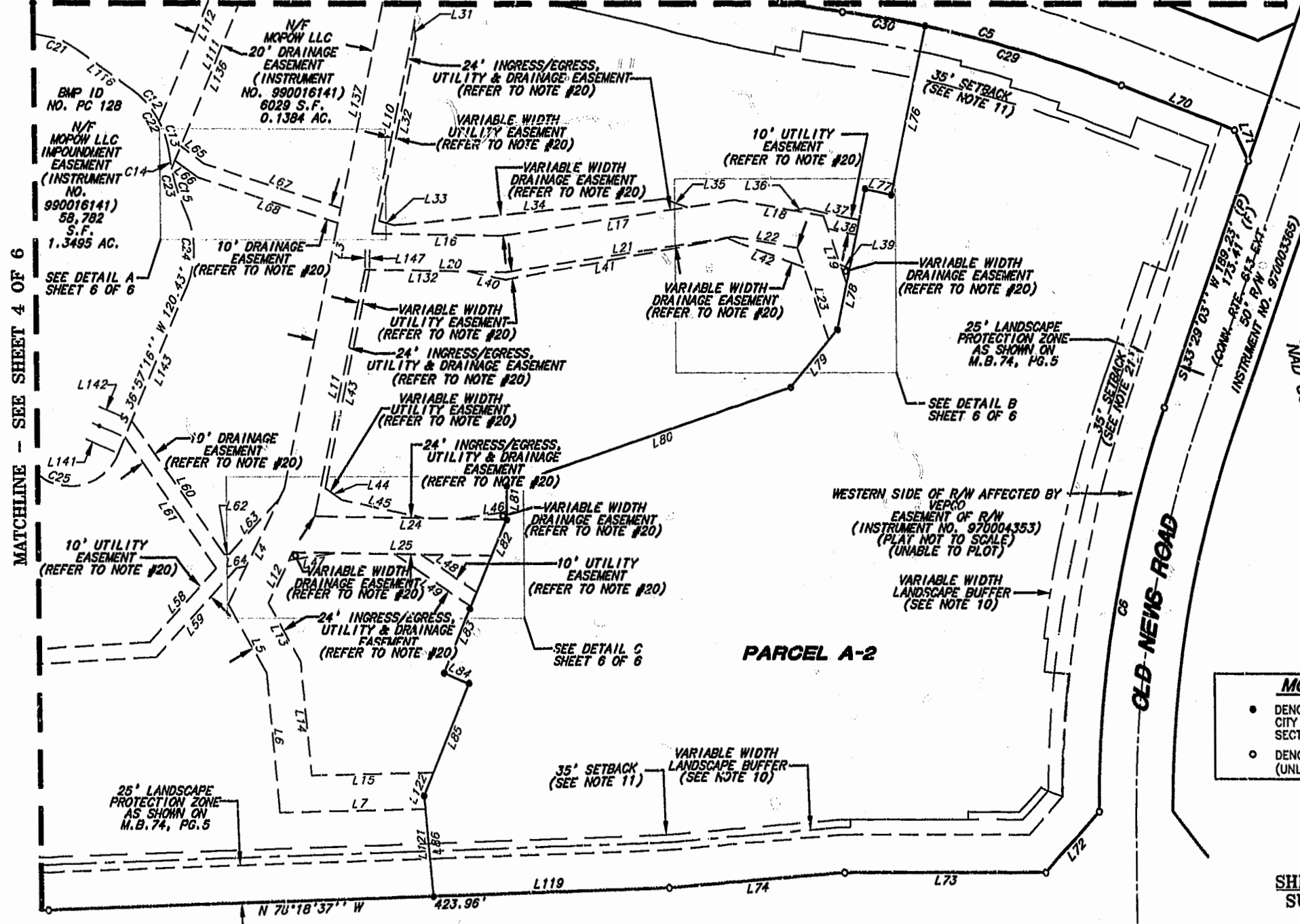


MATCHLINE - SEE SHEET 5 OF 6

W.P. LARGE, INC.
WPL
 SURVEYING-ENGINEERING
 PLANNING
 244 MURKIN TRAIL
 SUITE B
 VIRGINIA BEACH, VIRGINIA
 (804) 431-1041
 (804) 465-1418 FAX.



COMMONWEALTH OF VIRGINIA
 WILLIAM R. PRITCHARD
 NO. 002266
 12-14-01
 LAND SURVEYOR

- MONUMENT LEGEND**
- DENOTES MONUMENT SET PER JAMES CITY COUNTY SUBDIVISION ORDINANCE SECTION 10-34 TO 19-36
 - DENOTES OLD PIN FOUND (UNLESS NOTED OTHERWISE)

SHEET 3 OF 6
SUBDIVISION

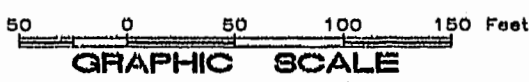
OF
MONTICELLO AT POWHATAN APARTMENTS
PARCEL A
AREA DESIGNATION D
21.7638 ACRES TOTAL

AS SHOWN ON
 SUBDIVISION PLAT
 APARTMENT PARCEL NORTH SIDE OF NEWS ROAD
 POWHATAN OF WILLIAMSBURG SECONDARY
 BERKELEY DISTRICT - JAMES CITY COUNTY, VA.
 PLAT RECORDED IN M.B. 74, PG. 6, IN THE CLERK'S OFFICE OF
 THE CIRCUIT COURT, OF JAMES CITY COUNTY, VIRGINIA

SCALE 1"=60' DATE: DECEMBER 13, 2001

SEE SHEET 1 OF 6 FOR NOTES AND CERTIFICATIONS

SEE SHEET 6 OF 6 FOR LINE TABLE AND CURVE TABLE



City of Williamsburg & County of James City Circuit Court: This PLAT was recorded on December 31, 2001 at 2:15 P.M., P.B. 87 PG. 32-42
 DOCUMENT # 010024015
 BETSY B. WOOLRIDGE, CLERK
Betsy Woolridge Clerk

MATCHLINE - SEE SHEET 4 OF 6

N/F MOPOW LLC
 20' DRAINAGE EASEMENT
 (INSTRUMENT NO. 990016141)
 6029 S.F.
 0.1384 AC.

N/F MOPOW LLC
 IMPONDMENT EASEMENT
 (INSTRUMENT NO. 990016141)
 58,782 S.F.
 1.3495 AC.

10' UTILITY EASEMENT
 (REFER TO NOTE #20)

25' LANDSCAPE PROTECTION ZONE
 AS SHOWN ON M.B. 74, PG. 5

24' INGRESS/EGRESS, UTILITY & DRAINAGE EASEMENT
 (REFER TO NOTE #20)

10' DRAINAGE EASEMENT
 (REFER TO NOTE #20)

24' INGRESS/EGRESS, UTILITY & DRAINAGE EASEMENT
 (REFER TO NOTE #20)

24' INGRESS/EGRESS, UTILITY & DRAINAGE EASEMENT
 (REFER TO NOTE #20)

24' INGRESS/EGRESS, UTILITY & DRAINAGE EASEMENT
 (REFER TO NOTE #20)

24' INGRESS/EGRESS, UTILITY & DRAINAGE EASEMENT
 (REFER TO NOTE #20)

SEE DETAIL C SHEET 6 OF 6

35' SETBACK (SEE NOTE 11)
 VARIABLE WIDTH LANDSCAPE BUFFER (SEE NOTE 10)

PARCEL A-2

WESTERN SIDE OF R/W AFFECTED BY
 VEPKO EASEMENT OF R/W
 (INSTRUMENT NO. 970004353)
 (PLAT NOT TO SCALE)
 (UNABLE TO PLOT)

VARIABLE WIDTH LANDSCAPE BUFFER
 (SEE NOTE 10)

SEE DETAIL B SHEET 6 OF 6

VARIABLE WIDTH DRAINAGE EASEMENT
 (REFER TO NOTE #20)

VARIABLE WIDTH DRAINAGE EASEMENT
 (REFER TO NOTE #20)

VARIABLE WIDTH DRAINAGE EASEMENT
 (REFER TO NOTE #20)

10' UTILITY EASEMENT
 (REFER TO NOTE #20)

35' SETBACK (SEE NOTE 11)

NEWS ROAD (STATE ROUTE 613)
 VARIABLE WIDTH R/W
 (INSTRUMENT NO. 970003385)