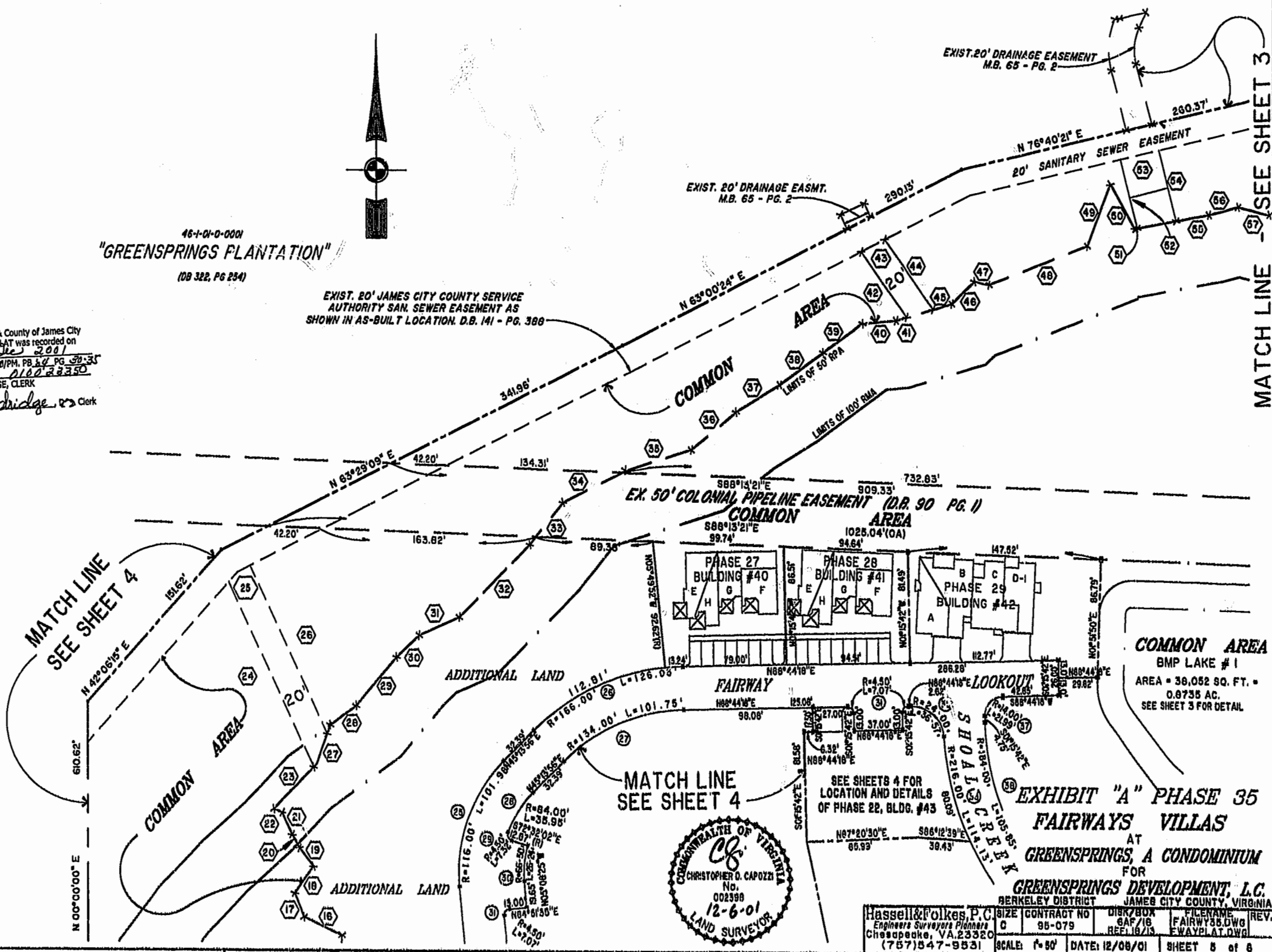


46-1-01-0-0001
"GREENSPRINGS PLANTATION"
(08 322, PG 234)

EXIST. 80' JAMES CITY COUNTY SERVICE
AUTHORITY SAN. SEWER EASEMENT AS
SHOWN IN AS-BUILT LOCATION. D.B. 141 - PG. 388

City of Williamsburg & County of James City
Circuit Court: This PLAT was recorded on
14 Dec 2001
at 3:02 PM, PB 54 PG 39-35
DOCUMENT # 010023350
BETSY B. WOOLRIDGE, CLERK
Betsy Woolridge Clerk



MATCH LINE
SEE SHEET 4

MATCH LINE - SEE SHEET 3



SEE SHEETS 4 FOR
LOCATION AND DETAILS
OF PHASE 22, BLDG. #43

EXHIBIT "A" PHASE 35
FAIRWAYS VILLAS
AT
GREENSPRINGS, A CONDOMINIUM
FOR
GREENSPRINGS DEVELOPMENT, L.C.
BERKELEY DISTRICT JAMES CITY COUNTY, VIRGINIA

Hassell & Folkes, P.C. Engineers Surveyors Planners Chesapeake, VA 23320 (757)547-9531	SIZE: C CONTRACT NO: 95-079	DISK/BOX: GAF/18 REF: 16/13	FILENAME: FAIRWAYS.DWG FWAYPLAT.DWG	REV:
SCALE: 1"=80'	DATE: 12/08/01	SHEET 5 of 6		