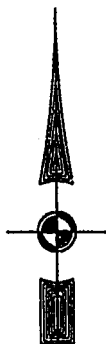


EXIST. 20' JAMES CITY COUNTY SERVICE AUTHORITY SAN. SEWER EASEMENT AS SHOWN IN AS-BUILT LOCATION. D.B. 141 - PG. 388



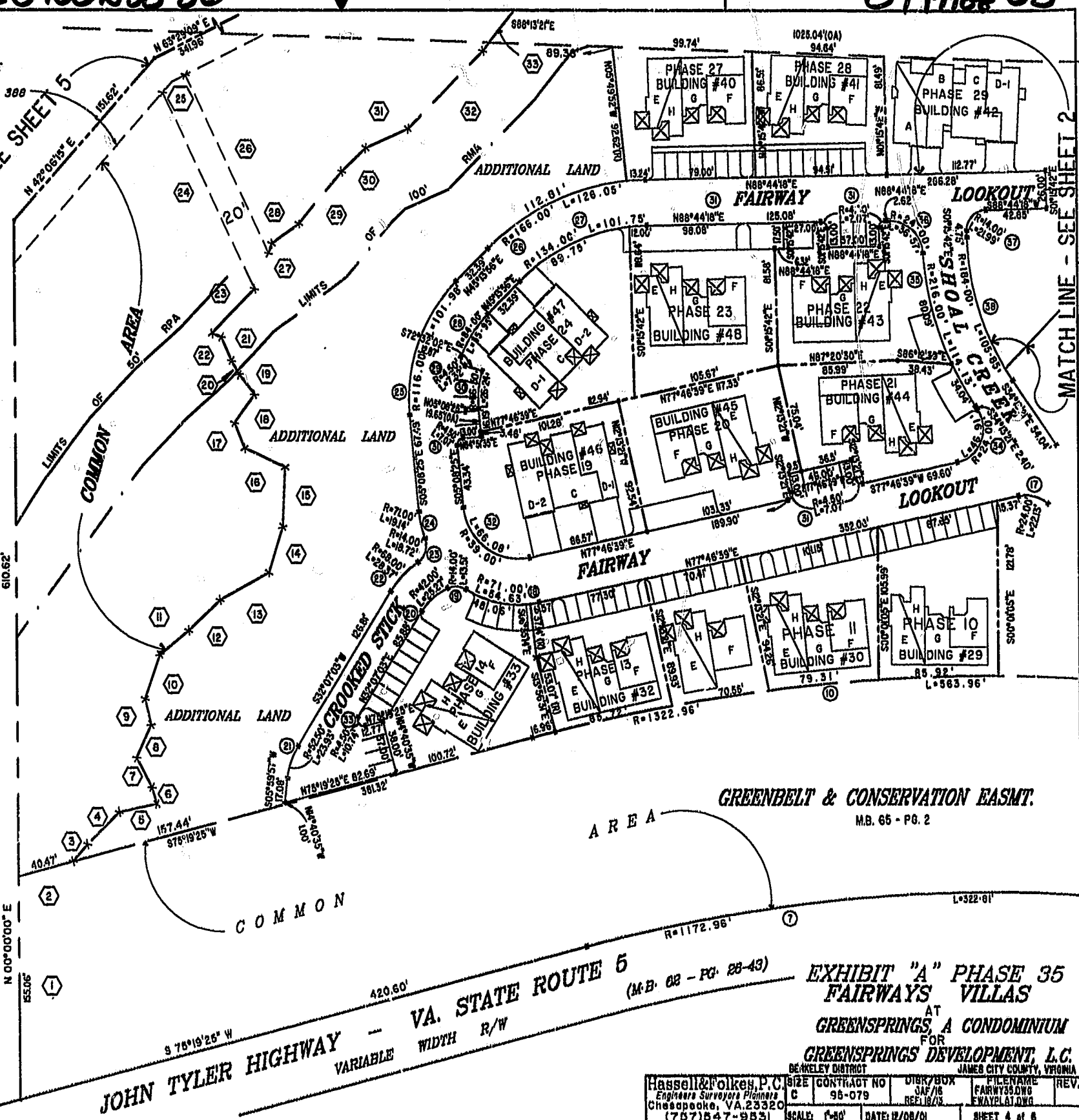
MATCH LINE - SEE SHEET 5

MATCH LINE - SEE SHEET 2

46-1-01-0-0001  
"GREENSPRINGS PLANTATION"  
(DB 322, PG 234)

City of Williamsburg & County of James City  
Circuit Court: This PLAT was recorded on  
14 (th) 2001  
at 3:10 PM, PG 24 PG 30-35  
DOCUMENT # 010023350  
BETSY B. WOOLRIDGE, CLERK

*Betsy Woolridge* Dep. Clerk



GREENBELT & CONSERVATION EASMT.  
M.B. 65 - PG. 2

VA. STATE ROUTE 6  
420.60'  
9 76°19'25" W  
VARIABLE WIDTH R/W  
JOHN TYLER HIGHWAY

EXHIBIT "A" PHASE 35  
FAIRWAYS VILLAS  
AT  
GREENSPRINGS, A CONDOMINIUM  
FOR  
GREENSPRINGS DEVELOPMENT, L.C.

Hassell & Polken, P.C. Engineers Surveyors Planners Chesapeake, VA 23320 (757) 547-9531	SIZE C	CONTRACT NO 98-079	DIBR/BOX JAF/16 REF 18/13	FILENAME FARWY35.DWG EWAYPLAT.DWG	REV.
	SCALE: 1"=30'	DATE: 12/08/01	SHEET 4 of 6		