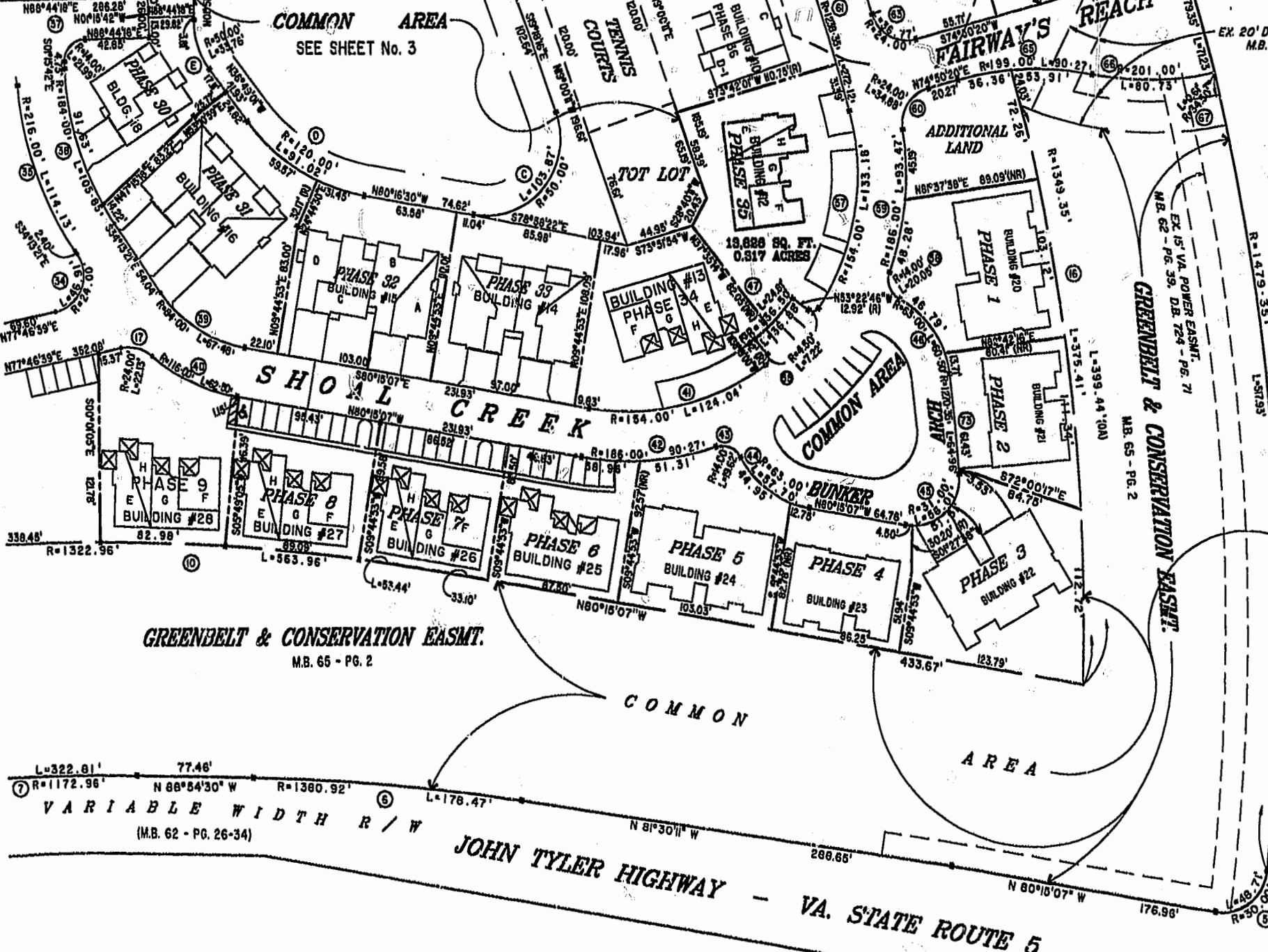


#01002350

84 PAGE 31

MATCH LINE - SEE SHEET 4

MATCH LINE - SEE SHEET 3



GREENSPRINGS VARIABLE WIDTH R/W
 (M.B. 62 - PG. 26-34)

GREENBELT & CONSERVATION EASMT.
M.B. 65 - PG. 2

VARIABLE WIDTH R/W
(M.B. 62 - PG. 26-34)

JOHN TYLER HIGHWAY - VA. STATE ROUTE 5

EXHIBIT "A" PHASE 35
 FAIRWAYS VILLAS
 AT
 GREENSPRINGS, A CONDOMINIUM
 FOR
 GREENSPRINGS DEVELOPMENT, L.C.
 BERKELEY DISTRICT JAMES CITY COUNTY, VIRGINIA

City of Williamsburg & County of James City
 Circuit Court. This PLAT was recorded on
 12-6-01
 at 2:02 PM, PD, PG 30-35
 DOCUMENT # 01002350
 BETSY B. WOOLRIDGE, CLERK



Hassell & Folkes, P.C. Engineers Surveyors Planners Chesapeake, VA 23320 (757)547-8531	SCALE: 1"=50'	DATE: 12/06/01	SHEET 2 of 6
-------------------------------------------------------------------------------------------------	---------------	----------------	--------------