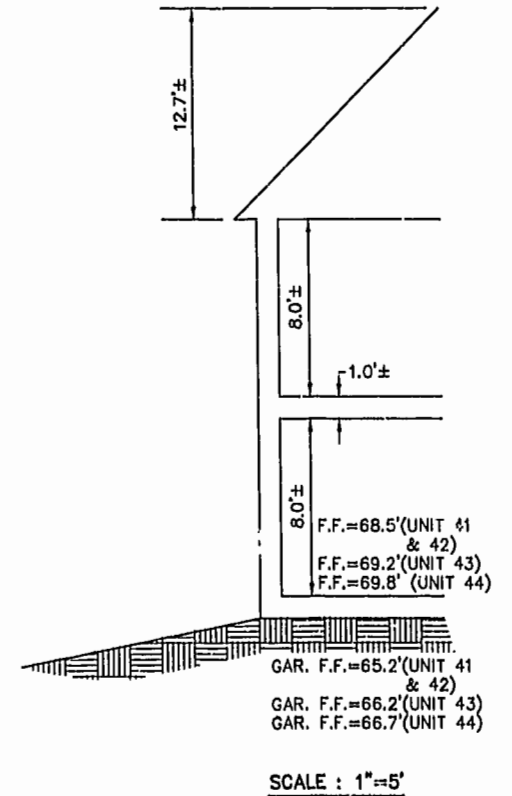
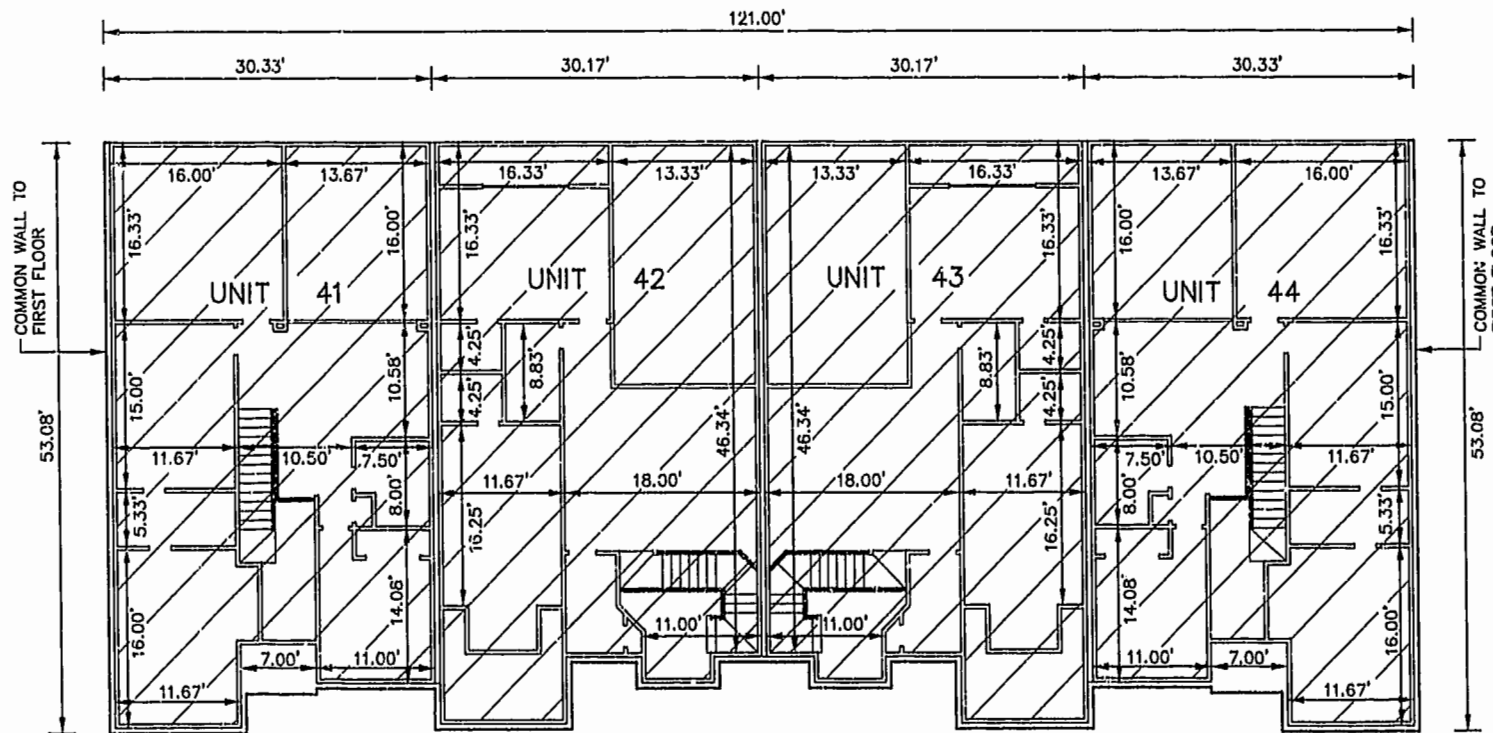


EXHIBIT B-10
 SUPPLEMENTAL CONDOMINIUM PLAN
 OF
 WYNDHAM PLANTATION
 CONDOMINIUM
 WILLIAMSBURG, VIRGINIA
 SCALE: 1"=10' OCTOBER 16, 2001
 JOHN E. SIRINE AND ASSOCIATES, LTD.
 SURVEYORS • ENGINEERS • PLANNERS
 VIRGINIA BEACH, VIRGINIA
 (757) 486-4910

NOTES:

- BUILDING DIMENSIONS SHOWN HEREON ARE INTERIOR DIMENSIONS. THESE DIMENSIONS ARE IN FEET AND WERE TAKEN FROM PLANS SUPPLIED ENTITLED "WYNDHAM PLANTATION AT WILLIAMSBURG, FLOOR PLANS" BY PROGRESSIVE DESIGNS DATED 11/19/98.
- INTERIOR UNIT CONFIGURATIONS AND PARTITIONS AS DEPICTED HEREON ARE FOR THE PURPOSE OF ILLUSTRATION ONLY AND MAY NOT REPRESENT THE INTERIOR OF A UNIT AS ACTUALLY CONSTRUCTED.

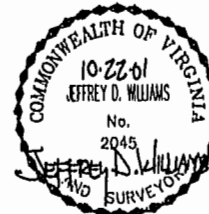
SECOND FLOOR - BUILDING 21
 SCALE: 1"=10'



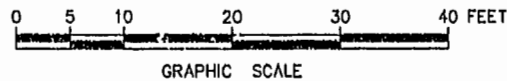
PHASE	UNIT No.	UNIT ADDRESS	UNIT AREA
11	41	449 ZELKOVA ROAD	2,246 S.F.
11	42	453 ZELKOVA ROAD	2,101 S.F.
11	43	457 ZELKOVA ROAD	2,101 S.F.
11	44	461 ZELKOVA ROAD	2,246 S.F.

THE UNDERSIGNED CERTIFIES THAT THESE PLANS ARE ACCURATE AND COMPLY WITH THE PROVISIONS OF CODE OF VIRGINIA, SECTION 55-79.58.B AND THAT ALL UNITS OR PORTIONS THEREOF DEPICTED HEREON AND ALL COMMON ELEMENTS HAVE BEEN SUBSTANTIALLY COMPLETED.

SIGNED: Jeffrey D. Williams
 JEFFREY D. WILLIAMS, I.S.



City of Williamsburg & County of James City
 Circuit Court: This PLAT was recorded on
 Nov 16, 2001
 at 11:46 AM/PM, PB 83 PG 96
 DOCUMENT # 011769
 BETSY B. WOOLRIDGE, CLERK
Betsy Woolridge, Dep. Clerk



UNIT AREA