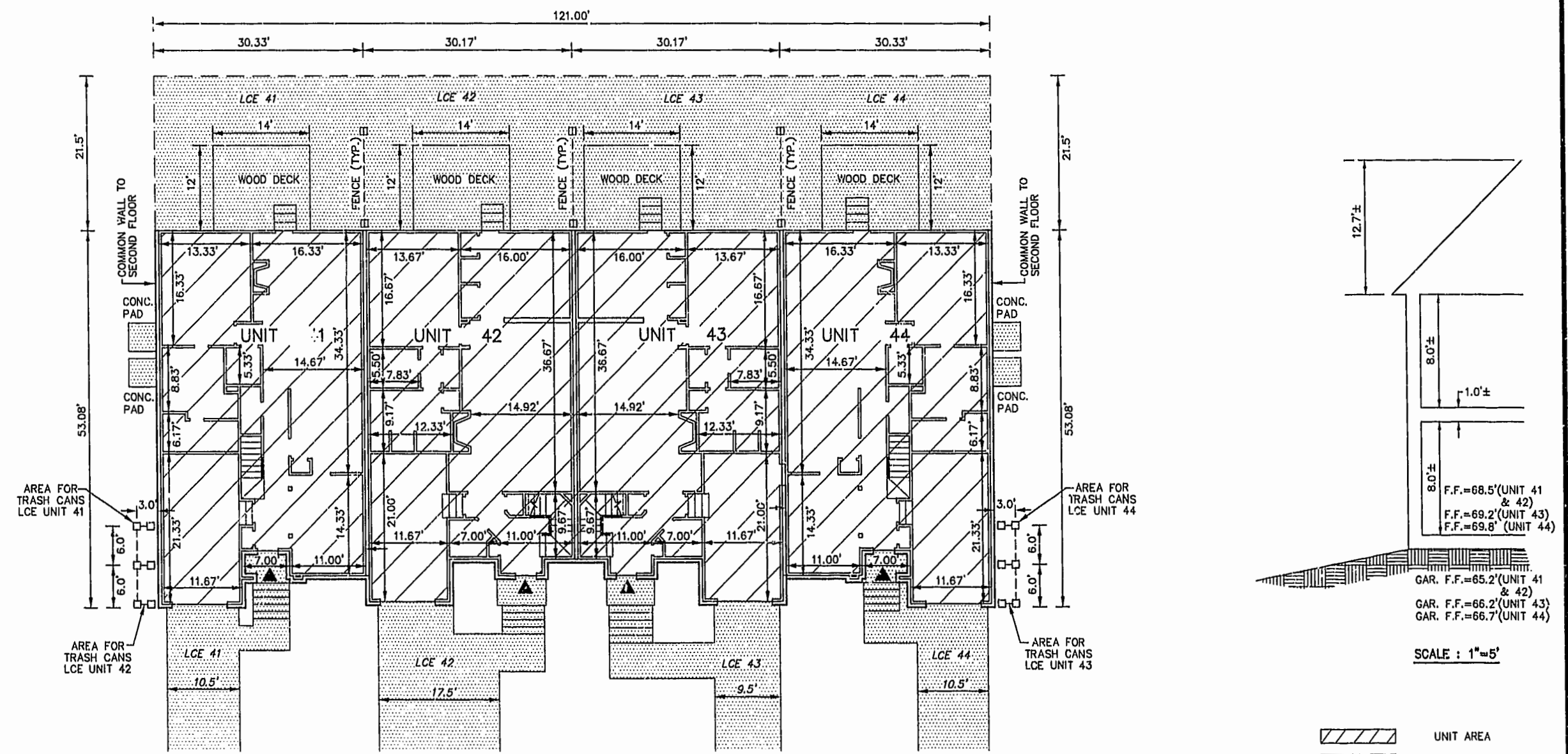


EXHIBIT B-10
SUPPLEMENTAL CONDOMINIUM PLAN
OF
WYNDHAM PLANTATION
CONDOMINIUM

WILLIAMSBURG, VIRGINIA
SCALE: 1"=10' OCTOBER 16, 2001
JOHN E. SIRINE AND ASSOCIATES, LTD.
SURVEYORS • ENGINEERS • PLANNERS
VIRGINIA BEACH, VIRGINIA
(757) 486-4910

FIRST FLOOR — BUILDING 21
SCALE: 1"=10'

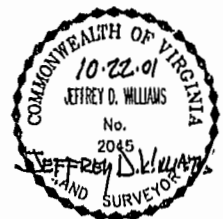
- NOTES:
- BUILDING DIMENSIONS SHOWN HEREON ARE INTERIOR DIMENSIONS. THESE DIMENSIONS ARE IN FEET AND WERE TAKEN FROM PLANS SUPPLIED ENTITLED "WYNDHAM PLANTATION AT WILLIAMSBURG, FLOOR PLANS" BY PROGRESSIVE DESIGNS DATED 11/19/98.
 - INTERIOR UNIT CONFIGURATIONS AND PARTITIONS AS DEPICTED HEREON ARE FOR THE PURPOSE OF ILLUSTRATION ONLY AND MAY NOT REPRESENT THE INTERIOR OF A UNIT AS ACTUALLY CONSTRUCTED.



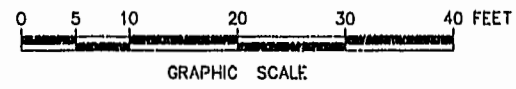
PHASE	UNIT No.	UNIT ADDRESS	UNIT AREA
11	41	449 ZELKOVA ROAD	2,246 S.F.
11	42	453 ZELKOVA ROAD	2,101 S.F.
11	43	457 ZELKOVA ROAD	2,101 S.F.
11	44	461 ZELKOVA ROAD	2,246 S.F.

THE UNDERSIGNED CERTIFIES THAT THESE PLANS ARE ACCURATE AND COMPLY WITH THE PROVISIONS OF CODE OF VIRGINIA, SECTION 55-79.58.B AND THAT ALL UNITS OR PORTIONS THEREOF DEPICTED HEREON AND ALL COMMON ELEMENTS HAVE BEEN SUBSTANTIALLY COMPLETED, UNLESS OTHERWISE NOTED.

SIGNED: Jeffrey D. Williams
JEFFREY D. WILLIAMS, L.S.



City of Williamsburg & County of James City
Circuit Court: This PLAT was recorded on
Nov 16 2001
at 11:40 AM PM, PB 83, PG 93-96
DOCUMENT # 011769
BETSY B. WOOLRIDGE, CLERK



12.7'±
8.0'±
1.0'±
8.0'±
F.F.=68.5'(UNIT 41 & 42)
F.F.=69.2'(UNIT 43)
F.F.=69.8'(UNIT 44)
GAR. F.F.=65.2'(UNIT 41 & 42)
GAR. F.F.=66.2'(UNIT 43)
GAR. F.F.=66.7'(UNIT 44)

SCALE: 1"=5'

- UNIT AREA
- LIMITED COMMON ELEMENT TO THE UNIT INDICATED (LCE)
- INDICATES FRONT ENTRANCE TO UNIT