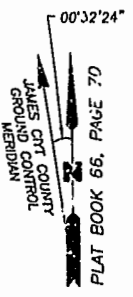


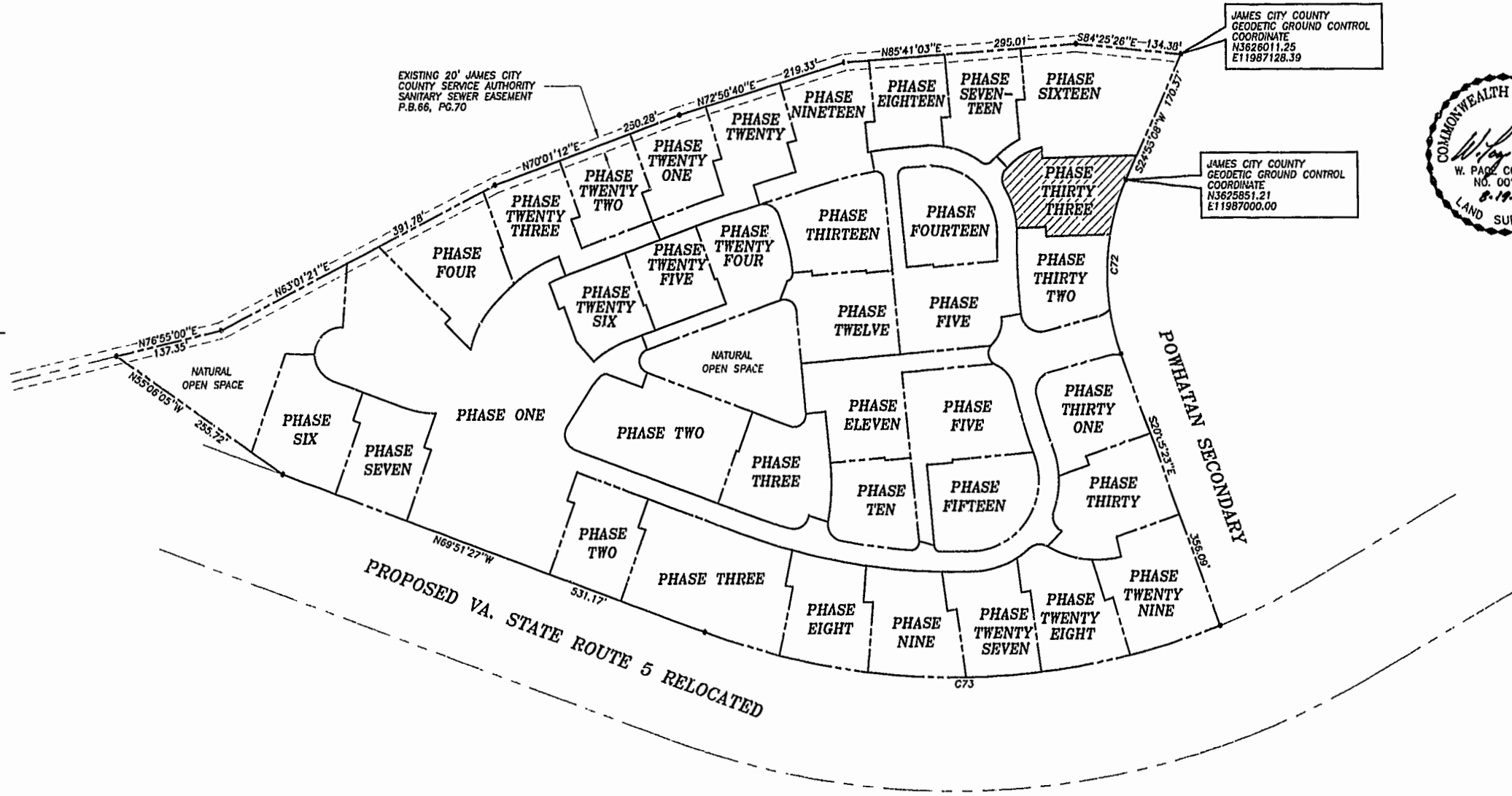
PLAT OF SUBDIVISION
WATERFORD
AT
POWHATAN SECONDARY
PHASE THIRTY-THREE
BERKELEY DISTRICT
JAMES CITY COUNTY, VIRGINIA

DATE: 10/21/98 SHEET 2 OF 3 SCALE: 1"=100'
PROJECT NO: 97-008 DRAWN BY: SJB

SA SLEDD & ASSOCIATES, P.C.
ENGINEERS PLANNERS SURVEYORS
11832 ROCK LANDING DRIVE, SUITE 203
NEWPORT NEWS, VIRGINIA 23606
(757) 873-3386

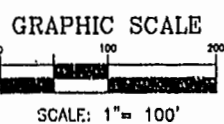


NOW OR FORMERLY
POWHATAN ENTERPRISES, INC.



JAMES CITY COUNTY
GEODEIC GROUND CONTROL
COORDINATE
N3826011.25
E11987128.39

JAMES CITY COUNTY
GEODEIC GROUND CONTROL
COORDINATE
N3625851.21
E11987000.00



CURVE DATA

| NUMBER | DELTA | RADIUS | LENGTH | TANGENT | CHORD | CHORD BEARING |
|--------|-----------|---------|---------|---------|---------|---------------|
| C72 | 45°00'31" | 280.00' | 219.95' | 116.00' | 214.34' | S02°24'52"W |
| C73 | 41°26'14" | 924.91' | 668.91' | 349.84' | 654.43' | S89°25'26"W |

City of Williamsburg & County of James City
Circuit Court, This PLAT was recorded on
November 15, 1998
at 1:25 AM/PM PG 83 PG 89-91
DOCUMENT # 010020997
BETSY B. WOOLRIDGE, CLERK
Betsy Woolridge Dep. Clerk

X:\PROJECTS\1998\05\20\GL\PLATS\PHASE33.DWG Fri Aug 20 13:53:10 1999