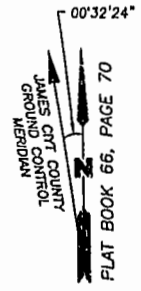


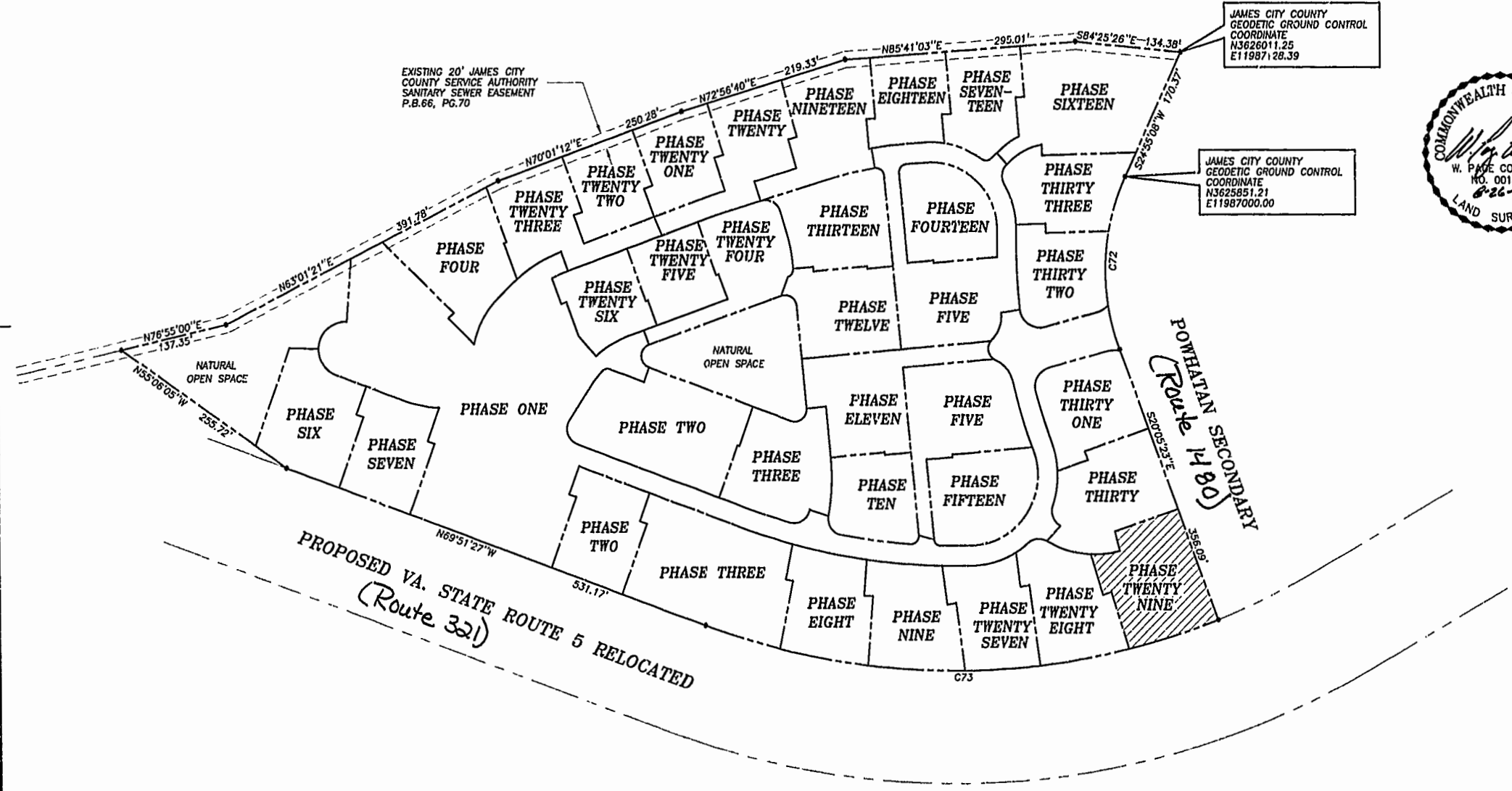
PLAT OF SUBDIVISION  
**WATERFORD**  
 AT  
**POWHATAN SECONDARY**  
 PHASE TWENTY-NINE  
 BERKELEY DISTRICT  
 JAMES CITY COUNTY, VIRGINIA

DATE: 10/21/98    SHEET 2 OF 3    SCALE: 1"=100'  
 PROJECT NO: 97-008    DRAWN BY: SJB

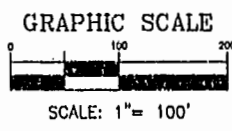
**SA** SLEDD & ASSOCIATES, P.C.  
 ENGINEERS PLANNERS SURVEYORS  
 11832 ROCK LANDING DRIVE, SUITE 203  
 NEWPORT NEWS, VIRGINIA 23606  
 (757) 873-3386



NOW OR FORMERLY  
 POWHATAN ENTERPRISES, INC.



PROPOSED VA. STATE ROUTE 5 RELOCATED  
 (Route 321)



City of Williamsburg & County of James City  
 Circuit Court: This PLAT was recorded on  
 November 15, 2001  
 at 1:51 AM PM, PG 86-88  
 DOCUMENT # 010020996  
 BETSY B. WOOLRIDGE, CLERK  
*Betsy Woolridge*, Dep. Clerk

**CURVE DATA**

NUMBER	DELTA	RADIUS	LENGTH	TANGENT	CHORD	CHORD BEARING
C72	45°00'31"	280.00'	219.95'	116.00'	214.34'	S02°24'52"W
C73	41°26'14"	924.91'	668.91'	349.84'	654.43'	S89°25'26"W